

T-TYPE/W

Aggressive environments

AGGRESSIVE ENVIRONMENTS

SUM-UP

- ☐ Enclosures in thermoplastic material, dark grey RAL 7012 colour, with high thicknesses providing structural solidity and durability
- ☐ Built-in FKM fluoroelastomer sealing gaskets
- ☐ Locking levers in thermoplastic material colour grey RAL 7001
- ☐ M25, M32 and M40 threaded cable entries
- ☐ IP66/IP69 degree of protection according to EN 60529
- ☐ UL TYPE 12 degree of protection according to ANSI/UL50
- ☐ Each enclosure carries its own part number, thread size and conformity markings and UL type rating
- ☐ Ambient temperature range: -40 °C / +90 °C

Q NOTE: As the characterizing element of the T-TYPE/W series is the different sealing gasket material, hoods and covers without sealing gaskets for this series are the same of T-TYPE Standard.





T-TYPE / W insulating AGGRESSIVE ENVIRONMENTS

inserts		page:
CDD	24 poles + ⊕	76
CDS	9 poles + ⊕	-
CDSH	9 poles + ⊕	86
CDSH NC	6 poles + ⊕	95
CNE	6 poles + ⊕	110
CSE	6 poles + ⊕	-
CSH	6 poles + ⊕	110
CSH S	6 poles + ⊕	122
CCE	6 poles + ⊕	130
CSS	6 poles + ⊕	148
CT, CTSE (16A *)	6 poles + ⊕	160
CQE	10 poles + ⊕	168
MIXO	2 modules	262 - 317

*) only for standard insulating version THIW

housings with single lever
FKM gasket



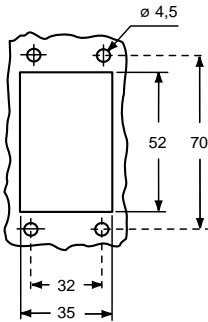
hoods with single lever, top entry
covers, FKM gasket



description	part No.	entry M	part No.	entry M	part No. (with loop)
-------------	----------	------------	----------	------------	-------------------------

bulkhead mounting housing with thermoplastic lever	THIW 06 L				
surface mounting housing, thermoplastic lever, high construction	TAPW 06 L25	25			
surface mounting housing, thermoplastic lever, high construction	TAPW 06 L32	32			
with thermoplastic lever and gasket, high construction			TAVW 06 LG25	25	
with thermoplastic lever and gasket, high construction			TAVW 06 LG32	32	
cover with thermoplastic lever and gasket					THCW 06 LG

panel cut-out for bulkhead mounting housings



TMA0
Hoods
(page 480)

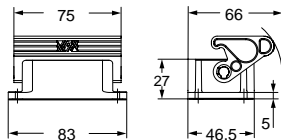


TMAV
Hoods
(page 480)

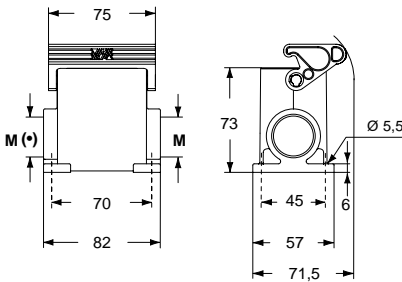
TCHC L
TCHC SL
Covers
with eyelet
(page 481)



THIW L

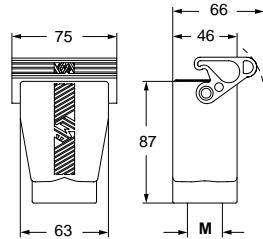


TAPW L

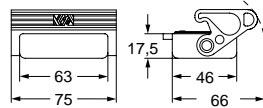


(*) The surface mounting, high construction housings are supplied with an open threaded entry (*) and diametrically opposite a closed threaded entry which can be opened by the user if required (with suitable tool).

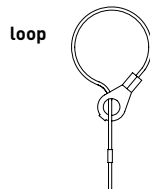
TAVW LG



THCW LG



For fixing on hoods



CALUS Type 12



ambient temperature limits -40 °C / +90 °C

T-TYPE / W insulating AGGRESSIVE ENVIRONMENTS

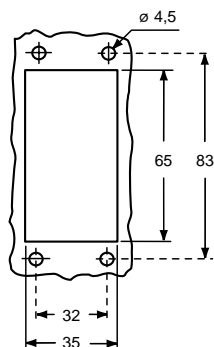
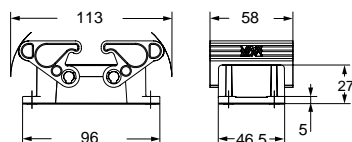
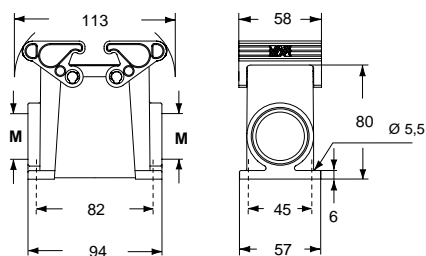
inserts		page:
CDD	42 poles + ⊕	78
CDS	18 poles + ⊕	-
CDSH	18 poles + ⊕	87
CNE	10 poles + ⊕	111
CSE	10 poles + ⊕	-
CSH	10 poles + ⊕	111
CSH S	10 poles + ⊕	123
CCE	10 poles + ⊕	131
CMSH	3+2 (aux) poles + ⊕	136
CMCE	3+2 (aux) poles + ⊕	137
CSS	10 poles + ⊕	149
CT, CTSE (16A) *)	10 poles + ⊕	161
CQE	18 poles + ⊕	169
CX	8/24 poles + ⊕	194
MIXO	3 modules	262 - 317

*) only for standard insulating version THIW

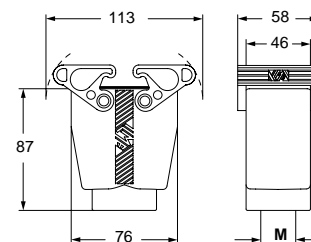
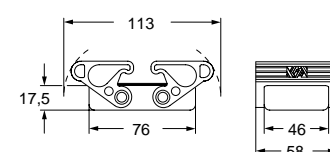
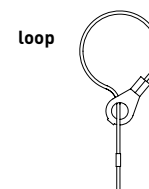
**housings with double lever
FKM gasket****hoods with double lever, top entry
covers, FKM gasket**

description	part No.	entry M	part No.	entry M	part No. (with loop)
bulkhead mounting housing with thermoplastic levers	THIW 10				
surface mounting housing, thermoplastic levers, high construction	TAPW 10.25	25			
surface mounting housing, thermoplastic levers, high construction	TAPW 10.32	32			
with thermoplastic levers and gasket, high construction			TAVW 10 G25	25	
with thermoplastic levers and gasket, high construction			TAVW 10 G32	32	
cover with 2 thermoplastic levers and gasket					THCW 10 G

panel cut-out for bulkhead mounting housings

**TMA0
Hoods
(page 482)****TMAV
Hoods
(page 482)****TCHC
TCHC S
Covers
with eyelet
(page 483)****THIW****TAPW**

The surface mounting, high construction housings are supplied with an open threaded entry and diametrically opposite a closed threaded entry which can be opened by the user if required (with suitable tool).

TAVW G**THCW G****For fixing on hoods****CAUS** Type 12

ambient temperature limits -40 °C / +90 °C

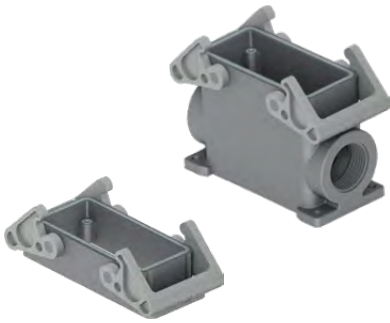


T-TYPE / W insulating AGGRESSIVE ENVIRONMENTS

inserts		page:
CD	40 poles + ⊕	70
CDD	72 poles + ⊕	79
CDS	27 poles + ⊕	-
CDSH	27 poles + ⊕	88
CNE	16 poles + ⊕	112
CSE	16 poles + ⊕	-
CSH	16 poles + ⊕	112
CSH S	16 poles + ⊕	124
CCE	16 poles + ⊕	132
CMSH, CMCE	6+2 (aux) poles + ⊕	138 - 139
CSS	16 poles + ⊕	150
CT, CTSE (16A) *)	16 poles + ⊕	162
CQE	32 poles + ⊕	170
CQEE	40 poles + ⊕	176
CP	6 poles + ⊕	178
CX	6/12, 6/36 and 12/2 poles + ⊕	197 - 199
CX	4/0 and 4/2 poles + ⊕	200 - 201
MIXO	4 modules	262 - 317

*) only for standard insulating version THIW

housings with double lever
FKM gasket



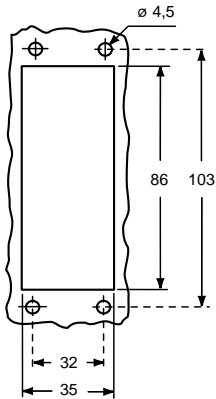
hoods with double lever, top entry
covers, FKM gasket



description	part No.	entry M	part No.	entry M	part No. (with loop)
-------------	----------	------------	----------	------------	-------------------------

bulkhead mounting housing with thermoplastic levers	THIW 16				
surface mounting housing, thermoplastic levers, high construction	TAPW 16.32	32			
surface mounting housing, thermoplastic levers, high construction	TAPW 16.40	40			
with thermoplastic levers and gasket, high construction			TAVW 16 G32	32	
with thermoplastic levers and gasket, high construction			TAVW 16 G40	40	
cover with 2 thermoplastic levers and gasket					THCW 16 G

panel cut-out for bulkhead mounting housings



TMAO
Hoods
(page 484)



TMAV
Hoods
(page 484)

TCHC
TCHC S
Covers
with eyelet
(page 485)

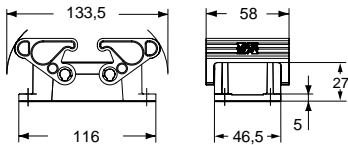


CE [®] **US** Type 12

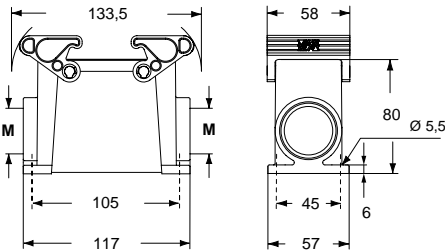


ambient temperature limits -40 °C / +90 °C

THIW

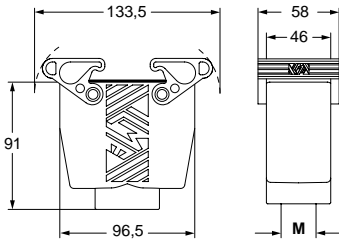


TAPW

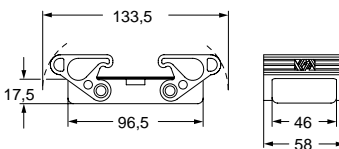


The surface mounting, high construction housings are supplied with an open threaded entry and diametrically opposite a closed threaded entry which can be opened by the user if required (with suitable tool).

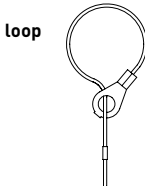
TAVW G



THCW G



For fixing on hoods



T-TYPE / W insulating AGGRESSIVE ENVIRONMENTS

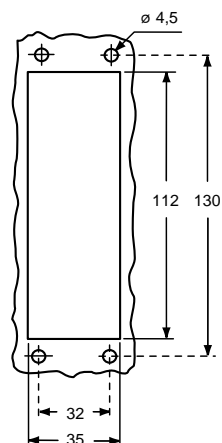
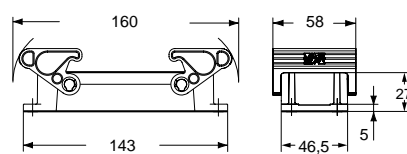
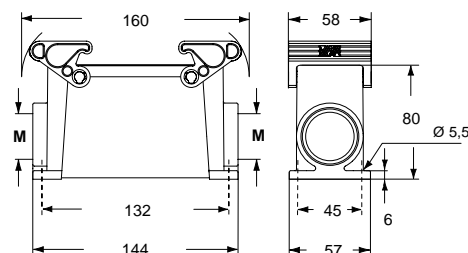
inserts		page:
CD	64 poles + ⊕	72
CDD	108 poles + ⊕	81
CDS	42 poles + ⊕	-
CDSH	42 poles + ⊕	89
CNE	24 poles + ⊕	113
CSE	24 poles + ⊕	-
CSH	24 poles + ⊕	113
CSH S	24 poles + ⊕	125
CCE	24 poles + ⊕	133
CMSH	10+2 (aux) poles + ⊕	140
CMCE	10+2 (aux) poles + ⊕	141
CSS	24 poles + ⊕	151
CT, CTSE (16A) *)	24 poles + ⊕	163
CQE	46 poles + ⊕	171
CQEE	64 poles + ⊕	177
CX	4/8 and 6/6 poles + ⊕	204, 206
MIXO	6 modules	262 - 317

*) only for standard insulating version THIW

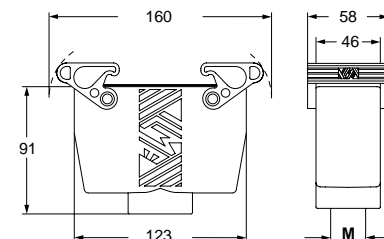
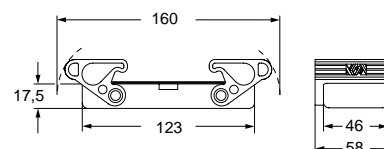
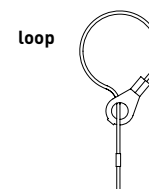
**housings with double lever
FKM gasket****hoods with double lever, top entry
covers, FKM gasket**

description	part No.	entry M	part No.	entry M	part No. (with loop)
bulkhead mounting housing with thermoplastic levers	THIW 24				
surface mounting housing, thermoplastic levers, high construction	TAPW 24.32	32			
surface mounting housing, thermoplastic levers, high construction	TAPW 24.40	40			
with thermoplastic levers and gasket, high construction			TAVW 24 G32	32	
with thermoplastic levers and gasket, high construction			TAVW 24 G40	40	
cover with 2 thermoplastic levers and gasket					THCW 24 G

panel cut-out for bulkhead mounting housings

**TMA0
Hoods
(page 486)****TMAV
Hoods
(page 486)****TCHC
TCHC S
Covers
with eyelet
(page 487)****THIW****TAPW**

The surface mounting, high construction housings are supplied with an open threaded entry and diametrically opposite a closed threaded entry which can be opened by the user if required (with suitable tool).

TAVW G**THCW G****For fixing on hoods****CAUS** Type 12

ambient temperature limits -40 °C / +90 °C