

Steckverbinder Bauform C

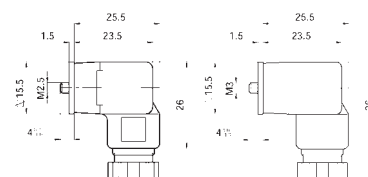
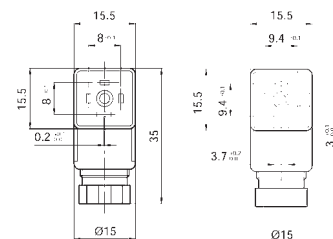
Kontaktabstand 8 oder 9,4 mm

EN 175301-803

Connector form C

Contact spacing 8 or 9,4 mm

Kontaktabstand <i>Contact spacing</i>	8 mm (DIN43650)
Kontaktabstand <i>Contact spacing</i>	9,4 mm (Industrienorm)
Nennspannung <i>Rated voltage</i>	250 VAC / 300 VDC
Dauerstrom <i>Operating current</i>	6 A
Max. Strom <i>Max. current</i>	10 A
Max. Leiterquerschnitt <i>Max. wire gauge</i>	0,75 mm ²
Kabelverschraubung <i>Cable gland</i>	PG7
Kabeldurchmesser <i>Cable diameter</i>	4-6 mm
Schutzart <i>Protection class</i>	IP65 (EN 60529)
Gehäusematerial <i>Housing material</i>	PA + 30% GF
Kontaktmaterial <i>Contact material</i>	CuZn (Ag)
Dichtung (Profil = 1 / Flach = 2)* <i>Gasket (profil = 1 / flat = 2)*</i>	Thermoplastisches Gummi <i>Thermoplastic rubber</i>
Befestigungsschraube <i>Screw</i>	8 mm: M2,5 9,4 mm: M3
Temperaturbereich <i>Temperature range</i>	-40 °C ... +125 °C



Technische Änderungen vorbehalten
Specifications are subject to change without notice

Farbe <i>Colour</i>	Artikel Nr. <i>Part no.</i>	8 mm	Artikel Nr. <i>Part no.</i>	9,4 mm
Schwarz <i>Black</i>	GDC3070S61		GIC3070S61	
Grau <i>Grey</i>	GDC3070G61		GIC3070G61	

GOGATEC Handelsges.m.b.H.
A-1220 Wien, Wagramer Straße 252/TOP II
Tel.: +43 1 258 3 257-0 Fax - 17
info@gogatec.com www.gogatec.com

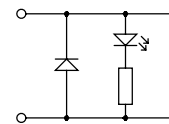
technische Änderungen vorbehalten



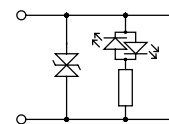
Connector form C
Led and circuit

Kontaktabstand (DIN43650) <i>Contact spacing (DIN43650)</i>	8 mm
Kontaktabstand (Industrie) <i>Contact spacing (Industrial)</i>	9,4 mm
Nennspannung <i>Rated voltage</i>	24 V
Betriebsanzeige <i>Operating indicator</i>	LED gelb <i>LED yellow</i>
Max. Leiterquerschnitt <i>Max. wire gauge</i>	0,75 mm ²
Kabelverschraubung <i>Cable gland</i>	PG 7
Kabeldurchmesser <i>Cable diameter</i>	4-6 mm
Schutzart <i>Protection class</i>	IP 65 (EN 60529)
Gehäusematerial <i>Housing material</i>	PA
Kontaktmaterial <i>Contact material</i>	CuZn (Ag)
Dichtung (Profil = 1 / Flach = 2)* <i>Gasket (profil = 1 / flat = 2)*</i>	Thermoplastisches Gummi <i>Thermoplastic rubber</i>
Befestigungsschraube <i>Screw</i>	8 mm: M2,5 9,4 mm: M3
Temperaturbereich <i>Temperature range</i>	-30° C ... +90° C

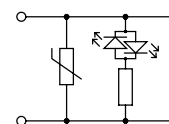
Technische Änderungen vorbehalten
Specifications are subject to change without notice



LED + Diode 24V DC



LED + Z-Diode 24V AC/DC



LED + Varistor 24V AC/DC

Beschaltung <i>Circuit</i>	Artikel Nr. <i>Part no.</i>	8 mm	Artikel Nr. <i>Part no.</i>	9,4 mm
LED + Diode	GDC3YD70T21		GIC3YD70T21	
LED + Z-Diode	GDC3YT70T21		GIC3YT70T21	
LED + Varistor	GDC3YV70T21		GIC3YV70T21	

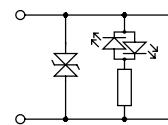
Steckverbinder Bf. C mit Leitung LED und Beschaltung

EN 175301-803

Connector form C Pre-wired with circuit

Kontaktabstand (DIN43650) <i>Contact spacing (DIN43650)</i>	8 mm
Kontaktabstand (Industrie) <i>Contact spacing (Industrial)</i>	9,4 mm
Nennspannung <i>Rated voltage</i>	24 VAC/DC
Dauerstrom <i>Operating current</i>	2,5A
Betriebsanzeige <i>Operating indicator</i>	LED gelb <i>LED yellow</i>
Schutzbeschaltung <i>Protection circuit</i>	Z-Diode (transil)
PVC-Leitung <i>PVC-cable</i>	3x0,5mm ²
Leitungsdurchmesser <i>Cable diameter</i>	5,5 mm
Schutzart <i>Protection class</i>	IP65 (EN 60529)
Gehäusematerial <i>Housing material</i>	PA
Kontaktmaterial <i>Contact material</i>	CuZn (Ag)
Dichtung (Profil = 1 / Flach = 2)* <i>Gasket (profil = 1 / flat = 2)*</i>	Thermoplastisches Gummi <i>Thermoplastic rubber</i>
Befestigungsschraube <i>Screw</i>	8 mm: M2,5 9,4 mm: M3
Temperaturbereich <i>Temperature range</i>	-25° C ... +80° C

Technische Änderungen vorbehalten
Specifications are subject to change without notice



LED + Z-Diode 24V AC/DC

Leitungslänge <i>Cable length</i>	Artikel Nr. <i>Part no.</i>	8 mm	Artikel Nr. <i>Part no.</i>	9,4 mm
3 m	GDC3YT70T2113		GIC3YT70T2113	
5 m	GDC3YT70T2115		GIC3YT70T2115	
10 m	GDC3YT70T2110		GIC3YT70T2110	

GOGATEC Handelsges.m.b.H.
A-1220 Wien, Wagramer Straße 252/TOP II
Tel.: +43 1 258 3 257-0 Fax - 17
info@gogatec.com www.gogatec.com

technische Änderungen vorbehalten

