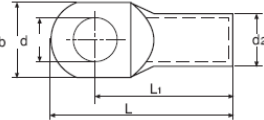
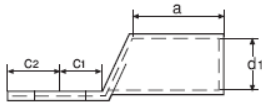


### PRESSKABELSCHUH DIN 46235

### Rohrkabelschuh KSDIN-RK



GOGATEC GmbH  
Wagramer Straße 252  
A-1220 Wien  
Tel.: +43 1 258 3 257 0  
Fax: +43 1 258 3 257 17  
office@gogatec.com  
www.gogatec.com

Wir liefern sicher

a.A. = auf Anfrage

mm <sup>2</sup>	Loch für	Wk DIN	Gewicht 100Stk.	Abmessung in mm								VPE	Typ	Art.Nr.	EURO
				d	d1	d2	l1	a	b	c1	c2				100Stk
6	M5	5	0,35	5,5	3,8	5,5	24,0	10,0	8,5	6,5	7,5	100	KSDIN-RK-6-M5	126010006005	32,55
	M6		0,35	5,5	3,8	5,5	24,0	10,0	8,5	7,5	8,0	100	KSDIN-RK-6-M6	126010006006	30,07
	M8		0,35	5,5	3,8	5,5	24,0	10,0	13,0	10,0	10,0	100	KSDIN-RK-6-M8	126010006008	36,57
10	M5	6	0,35	5,3	4,5	6,0	27,0	10,0	9,0	7,0	8,5	500	KSDIN-RK-10-M5	126010010005	17,45
	M6		0,35	6,4	4,5	6,0	27,0	10,0	9,0	7,5	8,5	500	KSDIN-RK-10-M6	126010010006	17,45
	M8		0,39	8,4	4,5	6,0	27,0	10,0	13,0	10,0	10,0	100	KSDIN-RK-10-M8	126010010008	18,58
	M10		0,39									100	KSDIN-RK-10-M10	126010010010	53,10
16	M6	8	1,16	6,4	5,5	8,5	36,0	20,0	13,0	7,5	8,0	250	KSDIN-RK-16-M6	126010016006	41,04
	M8		1,24	8,4	5,5	8,5	36,0	20,0	13,0	10,0	10,0	250	KSDIN-RK-16-M8	126010016008	42,33
	M10		1,32	10,5	5,5	8,5	36,0	20,0	17,0	12,0	12,0	250	KSDIN-RK-16-M10	126010016010	43,19
	M12		1,18	13,0	5,5	8,5	36,0	20,0	18,0	13,0	13,0	100	KSDIN-RK-16-M12	126010016012	44,43
25	M6	10	1,45	6,4	7,0	10,0	38,0	20,0	14,0	7,5	8,0	200	KSDIN-RK-25-M6	126010025006	52,20
	M8		1,55	8,4	7,0	10,0	38,0	20,0	16,0	10,0	10,0	200	KSDIN-RK-25-M8	126010025008	43,80
	M10		1,60	10,5	7,0	10,0	38,0	20,0	17,0	12,0	12,0	200	KSDIN-RK-25-M10	126010025010	54,90
	M12		1,55	13,0	7,0	10,0	38,0	20,0	19,0	13,0	13,0	100	KSDIN-RK-25-M12	126010025012	89,90
35	M6	12	3,00	6,4	8,2	12,5	42,0	20,0	17,0	7,5	8,0	120	KSDIN-RK-35-M6	126010035006	92,30
	M8		3,00	8,4	8,2	12,5	42,0	20,0	17,0	10,0	10,0	120	KSDIN-RK-35-M8	126010035008	95,40
	M10		2,90	10,5	8,2	12,5	42,0	20,0	19,0	12,0	12,0	120	KSDIN-RK-35-M10	126010035010	97,20
	M12		2,90	13,0	8,2	12,5	42,0	20,0	21,0	13,0	13,0	100	KSDIN-RK-35-M12	126010035012	119,30
	M14		3,40	15,0	8,2	12,5	42,0	20,0	21,0	14,5	14,5	120	KSDIN-RK-35-M14	126010035014	a.A.
50	M8	14	4,50	8,4	10,0	14,5	52,0	28,0	20,0	10,0	10,0	65	KSDIN-RK-50-M8	126010050008	138,40
	M10		4,50	10,5	10,0	14,5	52,0	28,0	22,0	12,0	12,0	65	KSDIN-RK-50-M10	126010050010	141,00
	M12		4,50	13,0	10,0	14,5	52,0	28,0	24,0	13,0	13,0	65	KSDIN-RK-50-M12	126010050012	141,00
	M14		4,50	15,0	10,0	14,5	52,0	28,0	24,0	14,5	14,5	65	KSDIN-RK-50-M14	126010050014	a.A.
	M16		4,50	17,0	10,0	14,5	52,0	28,0	28,0	16,0	16,0	100	KSDIN-RK-50-M16	126010050016	149,10
70	M8	16	5,80	8,4	11,5	16,5	55,0	28,0	24,0	10,0	10,0	50	KSDIN-RK-70-M8	126010070008	190,00
	M10		6,00	10,5	11,5	16,5	55,0	28,0	24,0	12,0	12,0	50	KSDIN-RK-70-M10	126010070010	193,00
	M12		6,00	13,0	11,5	16,5	55,0	28,0	24,0	13,0	13,0	50	KSDIN-RK-70-M12	126010070012	193,00
	M14		6,20	15,0	11,5	16,5	55,0	28,0	24,0	14,5	14,5	50	KSDIN-RK-70-M14	126010070014	a.A.
	M16		5,90	17,0	11,5	16,5	55,0	28,0	30,0	16,0	16,0	50	KSDIN-RK-70-M16	126010070016	312,00
95	M8	18	9,70	8,4	13,5	19,0	65,0	35,0	28,0	12,0	12,0	30	KSDIN-RK-95-M8	126010095008	271,00
	M10		10,00	10,5	13,5	19,0	65,0	35,0	28,0	12,0	12,0	30	KSDIN-RK-95-M10	126010095010	269,00
	M12		9,00	13,0	13,5	19,0	65,0	35,0	28,0	13,0	13,0	30	KSDIN-RK-95-M12	126010095012	269,00
	M14		9,50	15,0	13,5	19,0	65,0	35,0	28,0	14,5	14,5	30	KSDIN-RK-95-M14	126010095014	a.A.
	M16		9,70	17,0	13,5	19,0	65,0	35,0	32,0	16,0	16,0	50	KSDIN-RK-95-M16	126010095016	454,00
120	M10	20	11,40	10,5	15,5	21,0	70,0	35,0	32,0	15,0	16,0	30	KSDIN-RK-120-M10	126010120010	354,00
	M12		11,00	13,0	15,5	21,0	70,0	35,0	32,0	16,0	17,0	30	KSDIN-RK-120-M12	126010120012	355,00
	M14		11,40	15,0	15,5	21,0	70,0	35,0	32,0	18,0	19,0	30	KSDIN-RK-120-M14	126010120014	360,00
	M16		11,30	17,0	15,5	21,0	70,0	35,0	32,0	19,0	20,0	50	KSDIN-RK-120-M16	126010120016	363,00
	M20		11,20	21,0	15,5	21,0	70,0	35,0	38,0	21,0	22,0	50	KSDIN-RK-120-M20	126010120020	570,00
150	M10	22	16,00	10,5	17,0	23,5	78,0	35,0	34,0	15,0	16,0	25	KSDIN-RK-150-M10	126010150010	511,00
	M12		16,00	13,0	17,0	23,5	78,0	35,0	34,0	16,0	17,0	25	KSDIN-RK-150-M12	126010150012	513,00
	M14		16,80	15,0	17,0	23,5	78,0	35,0	34,0	19,0	20,0	25	KSDIN-RK-150-M14	126010150014	526,00
	M16		16,20	17,0	17,0	23,5	78,0	35,0	34,0	19,0	20,0	25	KSDIN-RK-150-M16	126010150016	810,00
	M20		16,00	21,0	17,0	23,5	78,0	35,0	40,0	21,0	22,0	25	KSDIN-RK-150-M20	126010150020	820,00
185	M10	25	18,90	10,5	19,0	25,5	82,0	40,0	37,0	15,0	16,0	18	KSDIN-RK-185-M10	126010185010	577,00
	M12		18,40	13,0	19,0	25,5	82,0	40,0	37,0	16,0	17,0	18	KSDIN-RK-185-M12	126010185012	580,00
	M14		19,40	15,0	19,0	25,5	82,0	40,0	37,0	19,0	20,0	18	KSDIN-RK-185-M14	126010185014	594,00
	M16		19,30	17,0	19,0	25,5	82,0	40,0	37,0	19,0	20,0	18	KSDIN-RK-185-M16	126010185016	939,00
	M20		19,30	21,0	19,0	25,5	82,0	40,0	40,0	21,0	22,0	18	KSDIN-RK-185-M20	126010185020	938,00

Preise gültig ab 01.01.2012 exkl. MWSt., freibleibend, Auftragsrabatt auf Anfrage  
Sonst. Konditionen siehe [www.gogatec.com/AGB.pdf](http://www.gogatec.com/AGB.pdf), techn. Änderungen vorbehalten

# GOGAPIN KSDIN

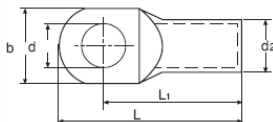
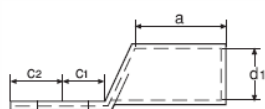
Presskabelschuhe, Pressverbinder

Passende Werkzeuge  
siehe GOGATOOL



Fortsetzung

## PRESSKABELSCHUH DIN 46235 Rohrkabelschuh KSDIN-RK



GOGATEC GmbH  
Wagramer Straße 252  
A-1220 Wien  
Tel.: +43 1 258 3 257 0  
Fax: +43 1 258 3 257 17  
office@gogatec.com  
www.gogatec.com

Wir liefern sicher

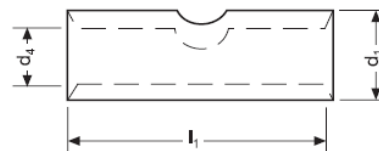
mm <sup>2</sup>	Loch für	Wk DIN	Gewicht 100Stk.	Abmessung in mm								VPE	Typ	Art.Nr.	EURO
				d	d1	d2	l1	a	b	c1	c2				100Stk
240	M10	28										25	KSDIN-RK-240-M10	126010240010	862,00
	M12		27,50	13,0	21,5	29,0	92,0	40,0	42,0	16,0	17,0	12	KSDIN-RK-240-M12	126010240012	859,00
	M14		28,30	15,0	21,0	29,0	92,0	40,0	42,0	19,0	20,0	12	KSDIN-RK-240-M14	126010240014	880,00
	M16		27,50	17,0	21,5	29,0	92,0	40,0	42,0	16,0	20,0	12	KSDIN-RK-240-M16	126010240016	886,00
	M20		27,60	21,0	21,5	29,0	92,0	40,0	42,0	16,0	22,0	25	KSDIN-RK-240-M20	126010240020	1.325,00
300	M16	32	34,00	17,0	24,5	32,0	100,0	50,0	48,0	19,0	22,0	10	KSDIN-RK-300-M16	126010300016	1.055,00
	M20		33,80	21,0	24,5	32,0	100,0	50,0	48,0	22,0	22,0	20	KSDIN-RK-300-M20	126010300020	1.662,00
400	M12	38	69,50									10	KSDIN-RK-400-M12	126010400012	3.432,00
	M14		69,40	15,0	27,5	38,5	115,0	70,0	5,0	25,0	25,0	10	KSDIN-RK-400-M14	126010400014	a.A.
	M16		67,50	17,0	27,5	38,5	115,0	70,0	55,0	25,0	25,0	10	KSDIN-RK-400-M16	126010400016	2.126,00
	M20		69,40	21,0	27,5	38,5	115,0	70,0	55,0	25,0	25,0	10	KSDIN-RK-400-M20	126010400020	2.413,00
500	M16	42	83,00	17,0	31,0	42,0	125,0	70,0	60,0	25,0	25,0	10	KSDIN-RK-500-M16	126010500016	4.302,00
	M20		83,00	21,0	31,0	42,0	125,0	70,0	60,0	25,0	25,0	1	KSDIN-RK-500-M20	126010500020	2.497,00
625	M16	44	79,60	17,0	34,5	44,0	135,0	80,0	64,0	25,0	25,0	5	KSDIN-RK-625-M16	126010625016	4.732,00
	M20		79,00	21,0	34,5	44,0	135,0	80,0	64,0	25,0	25,0	1	KSDIN-RK-625-M20	126010625020	2.559,00
800	M16	52	150,00	17,0	40,0	52,0	165,0	100,0	75,0	30,0	30,0	3	KSDIN-RK-800-M16	126010800016	7.096,00
	M20		150,00	21,0	40,0	52,0	165,0	100,0	75,0	30,0	30,0	3	KSDIN-RK-800-M20	126010800020	7.097,00

a.A. = auf Anfrage

## PRESSVERBINDER KSE-SVDIN DIN 46267 Teil 1

mm <sup>2</sup>	Gewicht 100 Stk.	Abmessung in mm			VPE	Typ	Art.Nr.	EURO
		d1	d4	l1				100Stk
6	0,310	5,5	3,8	30,0	100	KSDIN-SV-6	1260800060	41,30
10	0,350	6,0	4,5	30,0	100	KSDIN-SV-10	1260800100	63,50
16	1,450	8,5	5,5	50,0	100	KSDIN-SV-16	1260800160	91,60
25	1,770	10,0	7,5	50,0	100	KSDIN-SV-25	1260800250	116,40
35	2,900	12,5	8,2	50,0	100	KSDIN-SV-35	1260800350	153,00
50	4,260	14,5	10,0	56,0	50	KSDIN-SV-50	1260800500	223,00
70	5,410	16,5	11,5	56,0	50	KSDIN-SV-70	1260800700	281,00
95	8,700	19,0	13,5	70,0	50	KSDIN-SV-95	1260800950	412,00
120	9,700	21,0	15,5	70,0	50	KSDIN-SV-120	1260801200	474,00
150	14,500	23,5	17,0	80,0	50	KSDIN-SV-150	1260801500	680,00
185	17,000	25,5	19,0	85,0	25	KSDIN-SV-185	1260801850	825,00
240	23,500	29,0	21,5	90,0	25	KSDIN-SV-240	1260802400	1.131,00
300	29,230	32,0	24,5	100,0	25	KSDIN-SV-300	1260803000	1.163,00
400	75,320	28,5	27,5	150,0	10	KSDIN-SV-400	1260804000	1.882,00
500	79,100	42,0	31,0	160,0	5	KSDIN-SV-500	1260805000	4.156,00
625	89,400	44,0	34,5	160,0	5	KSDIN-SV-625	1260806250	4.573,00
800	151,200	52,0	40,0	200,0	3	KSDIN-SV-800	1260808000	6.855,00
1000	198,500	58,0	44,0	200,0	3	KSDIN-SV-1000	1260809990	a.A.

a.A. = auf Anfrage



Preise gültig ab 01.01.2012 exkl. MWSt., freibleibend, Auftragsrabatt auf Anfrage  
Sonst. Konditionen siehe [www.gogatec.com/AGB.pdf](http://www.gogatec.com/AGB.pdf), techn. Änderungen vorbehalten