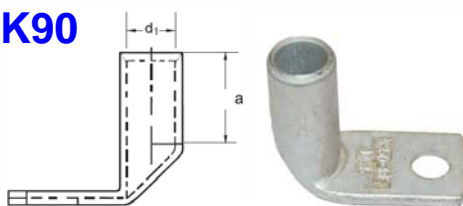


PRESSKABELSCHUH 90° DIN 46235

Rohrkabelschuh KSDIN-RK90

GOGATEC GmbH
Wagramer Straße 252
A-1220 Wien
Tel.: +43 1 258 3 257 0
Fax: +43 1 258 3 257 17
office@gogatec.com
www.gogatec.com



Wir liefern sicher

mm ²	Loch	Gewicht 100 Stk.	Abmessung in mm					VPE	Typ	Art.Nr.	EURO
	für		d2	d3	a	d4	d1				100Stk
10	M5	0,360	5,3	9,0	10,0	6,0	4,5	100	KSDIN-RK90-10-M5	126011010005	139,60
	M6	0,350	6,4	9,0	10,0	6,0	4,5		KSDIN-RK90-10-M6	126011010006	132,90
	M8	0,390	8,4	13,0	10,0	6,0	4,5		KSDIN-RK90-10-M8	126011010008	132,90
16	M6	1,250	6,4	13,0	20,0	8,5	5,5	100	KSDIN-RK90-16-M6	126011016006	173,00
	M8	1,320	8,4	13,0	20,0	8,5	5,5		KSDIN-RK90-16-M8	126011016008	173,00
	M10	1,370	10,5	17,0	20,0	8,5	5,5		KSDIN-RK90-16-M10	126011016010	178,00
	M12	1,380	13,0	18,0	20,0	8,5	5,5		KSDIN-RK90-16-M12	126011016012	177,00
25	M6	1,560	6,4	14,0	20,0	10,0	7,0	100	KSDIN-RK90-25-M6	126011025006	182,00
	M8	1,670	8,4	16,0	20,0	10,0	7,0		KSDIN-RK90-25-M8	126011025008	185,00
	M10	1,660	10,5	17,0	20,0	10,0	7,0		KSDIN-RK90-25-M10	126011025010	188,00
	M12	1,730	13,0	19,0	20,0	10,0	7,0		KSDIN-RK90-25-M12	126011025012	191,00
35	M8	2,900	8,4	17,0	20,0	12,5	8,2	100	KSDIN-RK90-35-M8	126011035008	235,00
	M10	2,920	10,5	19,0	20,0	12,5	8,2		KSDIN-RK90-35-M10	126011035010	236,00
	M12	2,980	13,0	21,0	20,0	12,5	8,2		KSDIN-RK90-35-M12	126011035012	246,00
	M14	3,030	15,0	21,0	20,0	12,5	8,2		KSDIN-RK90-35-M14	126011035014	246,00
50	M8	4,610	8,4	20,0	28,0	14,5	10,0	100	KSDIN-RK90-50-M8	126011050008	292,00
	M10	4,580	10,5	22,0	28,0	14,5	10,0		KSDIN-RK90-50-M10	126011050010	302,00
	M12	4,580	13,0	24,0	28,0	14,5	10,0		KSDIN-RK90-50-M12	126011050012	299,00
	M14	4,730	15,0	24,0	28,0	14,5	10,0		KSDIN-RK90-50-M14	126011050014	305,00
	M16	4,690	17,0	28,0	28,0	14,5	10,0		KSDIN-RK90-50-M16	126011050016	312,00
70	M8	6,140	8,4	24,0	24,0	16,5	11,5	50	KSDIN-RK90-70-M8	126011070008	359,00
	M10	6,600	10,5	24,0	24,0	16,5	11,5		KSDIN-RK90-70-M10	126011070010	363,00
	M12	6,440	13,0	24,0	24,0	16,5	11,5		KSDIN-RK90-70-M12	126011070012	381,00
	M14	6,500	15,0	24,0	24,0	16,5	11,5		KSDIN-RK90-70-M14	126011070014	370,00
	M16	6,630	17,0	30,0	30,0	16,5	11,5		KSDIN-RK90-70-M16	126011070016	376,00
95	M10	9,180	10,5	28,0	35,0	19,0	13,5	50	KSDIN-RK90-95-M10	126011095010	673,00
	M12	9,270	13,0	28,0	35,0	19,0	13,5		KSDIN-RK90-95-M12	126011095012	626,00
	M14	9,060	15,0	28,0	35,0	19,0	13,5		KSDIN-RK90-95-M14	126011095014	630,00
	M16	9,180	17,0	32,0	35,0	19,0	13,5		KSDIN-RK90-95-M16	126011095016	634,00
120	M10	10,500	10,5	32,0	35,0	21,0	15,5	25	KSDIN-RK90-120-M10	126011120010	757,00
	M12	10,900	13,0	32,0	35,0	21,0	15,5		KSDIN-RK90-120-M12	126011120012	805,00
	M14	11,000	15,0	32,0	35,0	21,0	15,5		KSDIN-RK90-120-M14	126011120014	752,00
	M16	11,200	17,0	32,0	35,0	21,0	15,5		KSDIN-RK90-120-M16	126011120016	758,00
	M20	11,000	21,0	38,0	35,0	21,0	15,5		KSDIN-RK90-120-M20	126011120020	758,00
150	M10	15,000	10,5	34,0	35,0	23,5	17,0	25	KSDIN-RK90-150-M10	126011150010	1.028,00
	M12	15,200	13,0	34,0	35,0	23,5	17,0		KSDIN-RK90-150-M12	126011150012	914,00
	M14	15,600	15,0	34,0	35,0	23,5	17,0		KSDIN-RK90-150-M14	126011150014	924,00
	M16	15,700	17,0	34,0	35,0	23,5	17,0		KSDIN-RK90-150-M16	126011150016	926,00
	M20	15,700	21,0	40,0	35,0	23,5	17,0		KSDIN-RK90-150-M20	126011150020	941,00
185	M10	19,200	10,5	37,0	40,0	25,5	19,0	25	KSDIN-RK90-185-M10	126011185010	1.052,00
	M12	19,100	13,0	37,0	40,0	25,5	19,0		KSDIN-RK90-185-M12	126011185012	1.054,00
	M14	19,100	15,0	37,0	40,0	25,5	19,0		KSDIN-RK90-185-M14	126011185014	1.057,00
	M16	19,000	17,0	37,0	40,0	25,5	19,0		KSDIN-RK90-185-M16	126011185016	1.056,00
	M20	19,000	21,0	40,0	40,0	25,5	19,0		KSDIN-RK90-185-M20	126011185020	1.056,00
240	M12	25,200	13,0	42,0	40,0	29,0	21,5	25	KSDIN-RK90-240-M12	126011240012	1.344,00
	M14	25,700	15,0	42,0	40,0	29,0	21,5		KSDIN-RK90-240-M14	126011240014	1.375,00
	M16	25,300	17,0	42,0	40,0	29,0	21,5		KSDIN-RK90-240-M16	126011240016	1.371,00
	M20	25,600	21,0	45,0	40,0	29,0	21,5		KSDIN-RK90-240-M20	126011240020	1.383,00

Preise gültig ab 01.01.2012 exkl. MTZ und MWSt., freibleibend, Auftragsrabatt auf Anfrage
Sonst. Konditionen siehe www.gogatec.com/AGB.pdf, techn. Änderungen vorbehalten

GOGAPIN KSDIN

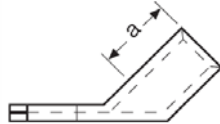
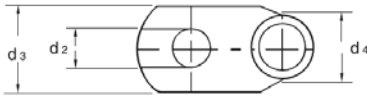
Presskabelschuhe 45°

Passende Werkzeuge
siehe GOGATOOL



PRESSKABELSCHUH 45° DIN 46235

Rohrkabelschuh KSDIN-RK45



GOGATEC GmbH
Wagramer Straße 252
A-1220 Wien
Tel.: +43 1 258 3 257 0
Fax: +43 1 258 3 257 17
office@gogatec.com
www.gogatec.com

Wir liefern sicher

mm ²	Loch	Gewicht 100 Stk.	Abmessung in mm					VPE	Typ	Art.Nr.	EURO
	für		d2	d3	a	d4	d1				100Stk
10	M5	0,360	5,3	9,0	10,0	6,0	4,5	100	KSDIN-RK45-10-M5	126012010005	a.A.
	M6	0,350	6,4	9,0	10,0	6,0	4,5		KSDIN-RK45-10-M6	126012010006	a.A.
	M8	0,390	8,4	13,0	10,0	6,0	4,5		KSDIN-RK45-10-M8	126012010008	a.A.
16	M6	1,250	6,4	13,0	20,0	8,5	5,5	100	KSDIN-RK45-16-M6	126012016006	a.A.
	M8	1,320	8,4	13,0	20,0	8,5	5,5		KSDIN-RK45-16-M8	126012016008	a.A.
	M10	1,370	10,5	17,0	20,0	8,5	5,5		KSDIN-RK45-16-M10	126012016010	a.A.
	M12	1,380	13,0	18,0	20,0	8,5	5,5		KSDIN-RK45-16-M12	126012016012	a.A.
25	M6	1,560	6,4	14,0	20,0	10,0	7,0	100	KSDIN-RK45-25-M6	126012025006	a.A.
	M8	1,670	8,4	16,0	20,0	10,0	7,0		KSDIN-RK45-25-M8	126012025008	a.A.
	M10	1,660	10,5	17,0	20,0	10,0	7,0		KSDIN-RK45-25-M10	126012025010	a.A.
	M12	1,730	13,0	19,0	20,0	10,0	7,0		KSDIN-RK45-25-M12	126012025012	a.A.
35	M8	2,900	8,4	17,0	20,0	12,5	8,2	100	KSDIN-RK45-35-M8	126012035008	a.A.
	M10	2,920	10,5	19,0	20,0	12,5	8,2		KSDIN-RK45-35-M10	126012035010	a.A.
	M12	2,980	13,0	21,0	20,0	12,5	8,2		KSDIN-RK45-35-M12	126012035012	a.A.
	M14	3,030	15,0	21,0	20,0	12,5	8,2		KSDIN-RK45-35-M14	126012035014	a.A.
50	M8	4,610	8,4	20,0	28,0	14,5	10,0	100	KSDIN-RK45-50-M8	126012050008	a.A.
	M10	4,580	10,5	22,0	28,0	14,5	10,0		KSDIN-RK45-50-M10	126012050010	a.A.
	M12	4,580	13,0	24,0	28,0	14,5	10,0		KSDIN-RK45-50-M12	126012050012	a.A.
	M14	4,730	15,0	24,0	28,0	14,5	10,0		KSDIN-RK45-50-M14	126012050014	a.A.
	M16	4,690	17,0	28,0	28,0	14,5	10,0		KSDIN-RK45-50-M16	126012050016	a.A.
70	M8	6,140	8,4	24,0	24,0	16,5	11,5	50	KSDIN-RK45-70-M8	126012070008	a.A.
	M10	6,600	10,5	24,0	24,0	16,5	11,5		KSDIN-RK45-70-M10	126012070010	a.A.
	M12	6,440	13,0	24,0	24,0	16,5	11,5		KSDIN-RK45-70-M12	126012070012	a.A.
	M14	6,500	15,0	24,0	24,0	16,5	11,5		KSDIN-RK45-70-M14	126012070014	a.A.
	M16	6,630	17,0	30,0	30,0	16,5	11,5		KSDIN-RK45-70-M16	126012070016	a.A.
95	M10	9,180	10,5	28,0	35,0	19,0	13,5	50	KSDIN-RK45-95-M10	126012095010	a.A.
	M12	9,270	13,0	28,0	35,0	19,0	13,5		KSDIN-RK45-95-M12	126012095012	a.A.
	M14	9,060	15,0	28,0	35,0	19,0	13,5		KSDIN-RK45-95-M14	126012095014	a.A.
	M16	9,180	17,0	32,0	35,0	19,0	13,5		KSDIN-RK45-95-M16	126012095016	a.A.
120	M10	10,500	10,5	32,0	35,0	21,0	15,5	25	KSDIN-RK45-120-M10	126012120010	a.A.
	M12	10,900	13,0	32,0	35,0	21,0	15,5		KSDIN-RK45-120-M12	126012120012	a.A.
	M14	11,000	15,0	32,0	35,0	21,0	15,5		KSDIN-RK45-120-M14	126012120014	a.A.
	M16	11,200	17,0	32,0	35,0	21,0	15,5		KSDIN-RK45-120-M16	126012120016	a.A.
	M20	11,000	21,0	38,0	35,0	21,0	15,5		KSDIN-RK45-120-M20	126012120020	a.A.
150	M10	15,000	10,5	34,0	35,0	23,5	17,0	25	KSDIN-RK45-150-M10	126012150010	a.A.
	M12	15,200	13,0	34,0	35,0	23,5	17,0		KSDIN-RK45-150-M12	126012150012	a.A.
	M14	15,600	15,0	34,0	35,0	23,5	17,0		KSDIN-RK45-150-M14	126012150014	a.A.
	M16	15,700	17,0	34,0	35,0	23,5	17,0		KSDIN-RK45-150-M16	126012150016	a.A.
	M20	15,700	21,0	40,0	35,0	23,5	17,0		KSDIN-RK45-150-M20	126012150020	a.A.
185	M10	19,200	10,5	37,0	40,0	25,5	19,0	25	KSDIN-RK45-185-M10	126012185010	a.A.
	M12	19,100	13,0	37,0	40,0	25,5	19,0		KSDIN-RK45-185-M12	126012185012	a.A.
	M14	19,100	15,0	37,0	40,0	25,5	19,0		KSDIN-RK45-185-M14	126012185014	a.A.
	M16	19,000	17,0	37,0	40,0	25,5	19,0		KSDIN-RK45-185-M16	126012185016	a.A.
	M20	19,000	21,0	40,0	40,0	25,5	19,0		KSDIN-RK45-185-M20	126012185020	a.A.
240	M12	25,200	13,0	42,0	40,0	29,0	21,5	25	KSDIN-RK45-240-M12	126012240012	a.A.
	M14	25,700	15,0	42,0	40,0	29,0	21,5		KSDIN-RK45-240-M14	126012240014	a.A.
	M16	25,300	17,0	42,0	40,0	29,0	21,5		KSDIN-RK45-240-M16	126012240016	a.A.
	M20	25,600	21,0	45,0	40,0	29,0	21,5		KSDIN-RK45-240-M20	126012240020	a.A.

a.A. auf Anfrage

Preise gültig ab 01.01.2012 exkl. MTZ und MWSt., freibleibend, Auftragsrabatt auf Anfrage
Sonst. Konditionen siehe www.gogatec.com/AGB.pdf, techn. Änderungen vorbehalten