

T-BOX branch coupling

enclosures:

size "44.27"
size "57.27"

1 branch-off T-BOX coupling



1 branch-off T-BOX coupling
to be fitted on DIN rails



description

part No.

part No.

for 2 hoods with lever and gasket "44.27" size
and one housing "44.27" size

CYG 06H06

for 2 hoods with lever and gasket "44.27" size
and one housing "57.27" size

CYG 06H10

for 2 hoods with lever and gasket "44.27" size
and one housing "44.27" size

CYG 06H06D

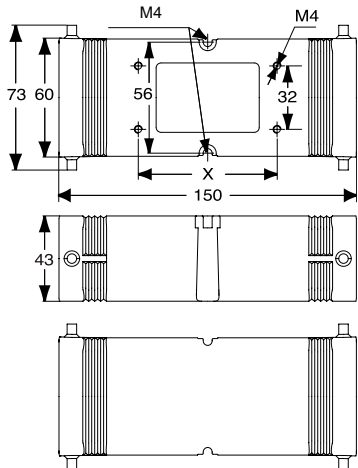
for 2 hoods with lever and gasket "44.27" size
and one housing "57.27" size

CYG 06H10D

How to use the CYG 06H branch coupling

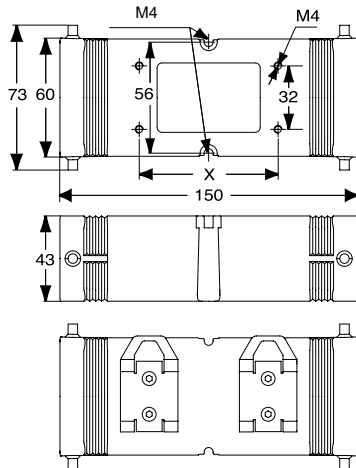
The cables are branched off by using the CYG 06H coupling in the 1 or 2 branch-off versions. Multi-pole inserts "44.27" size can be fitted inside the two side recesses. The entire unit can be used with one lever hoods complete with connector inserts. The front faces can be fitted with "44.27" and/or "57.27" size bulkhead housings. The coupling may also be used as an adapter by using a combination of different insert versions. The CHC 06 LG cover may be used to close the coupling side faces. In the branch-offs, the CSS series dual spring terminal inserts allow two wires to be connected without having to fit additional terminals inside the coupling.

CYG...H06 / H10

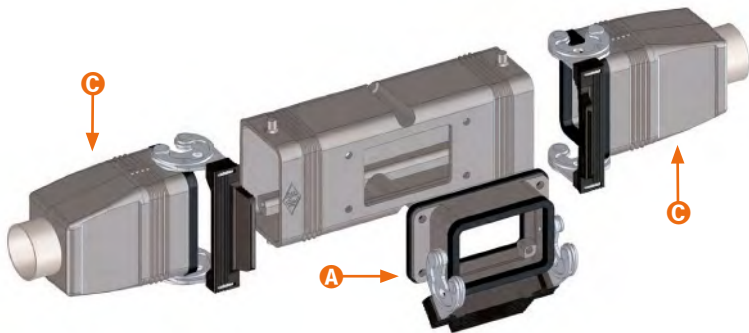


part No.	X
CYG 06H06	70
CYG 06H10	83

CYG...H06D / H10D



part No.	X
CYG 06H06D	70
CYG 06H10D	83



part No.	A	C
CYG 06H06	06	06
CYG 06H10	10	06
CYG 06H06D	06	06
CYG 06H10D	10	06

Legend:
A bulkhead mounting housings
C hoods with lever and gasket (LG)

CU[®]US Type 4/4X/12





T-BOX branch coupling

enclosures:

size "44.27"
size "57.27"

2 branch-off T-BOX coupling



2 branch-off T-BOX coupling

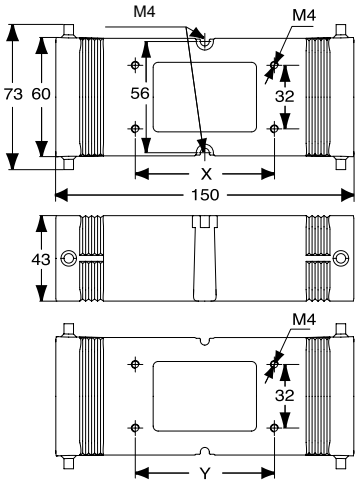


description	part No.	part No.
for 2  hoods with lever and gasket "44.27" size and one "44.27"  size fixing side housing and one "57.27"  size housing	CYG 06H0610	
for 2  hoods with lever and gasket "44.27" size and one "57.27"  size fixing side housing and one "44.27"  size enclosure	CYG 06H1006	
for 2  hoods with lever and gasket "44.27" size and two "44.27"  and  size housing		CYG 06H0606
for 2  hoods with lever and gasket "44.27" size and two "57.27"  and  size housing		CYG 06H1010

How to use the CYG 06H branch coupling

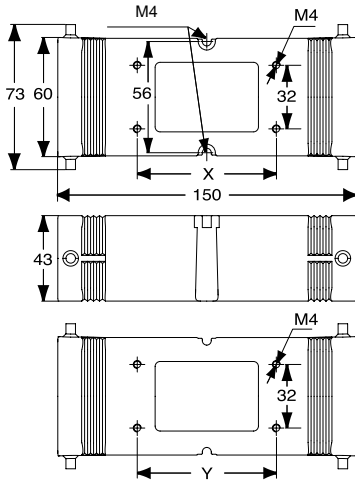
The cables are branched off by using the CYG 06H coupling in the 1 or 2 branch-off versions. Multi-pole inserts "44.27" size can be fitted inside the two side recesses. The entire unit can be used with one lever hoods complete with connector inserts. The front faces can be fitted with "44.27" and/or "57.27" size bulkhead housings. The coupling may also be used as an adapter by using a combination of different insert versions. The CHC 06 LG cover may be used to close the coupling side faces. In the branch-offs, the CSS series dual spring terminal inserts allow two wires to be connected without having to fit additional terminals inside the coupling.

CYG...H0610 / H1006



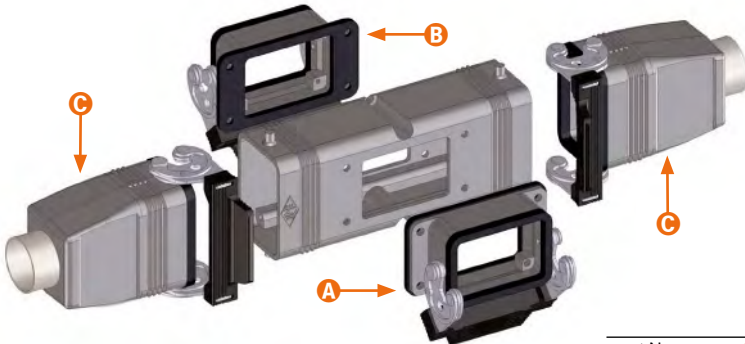
part No.	X	Y
CYG 06H0610	83	70
CYG 06H1006	70	83




CYG...H0606 / H1010



part No.	X	Y
CYG 06H0606	70	70
CYG 06H1010	83	83

CALUS[®] Type 4/4X/12



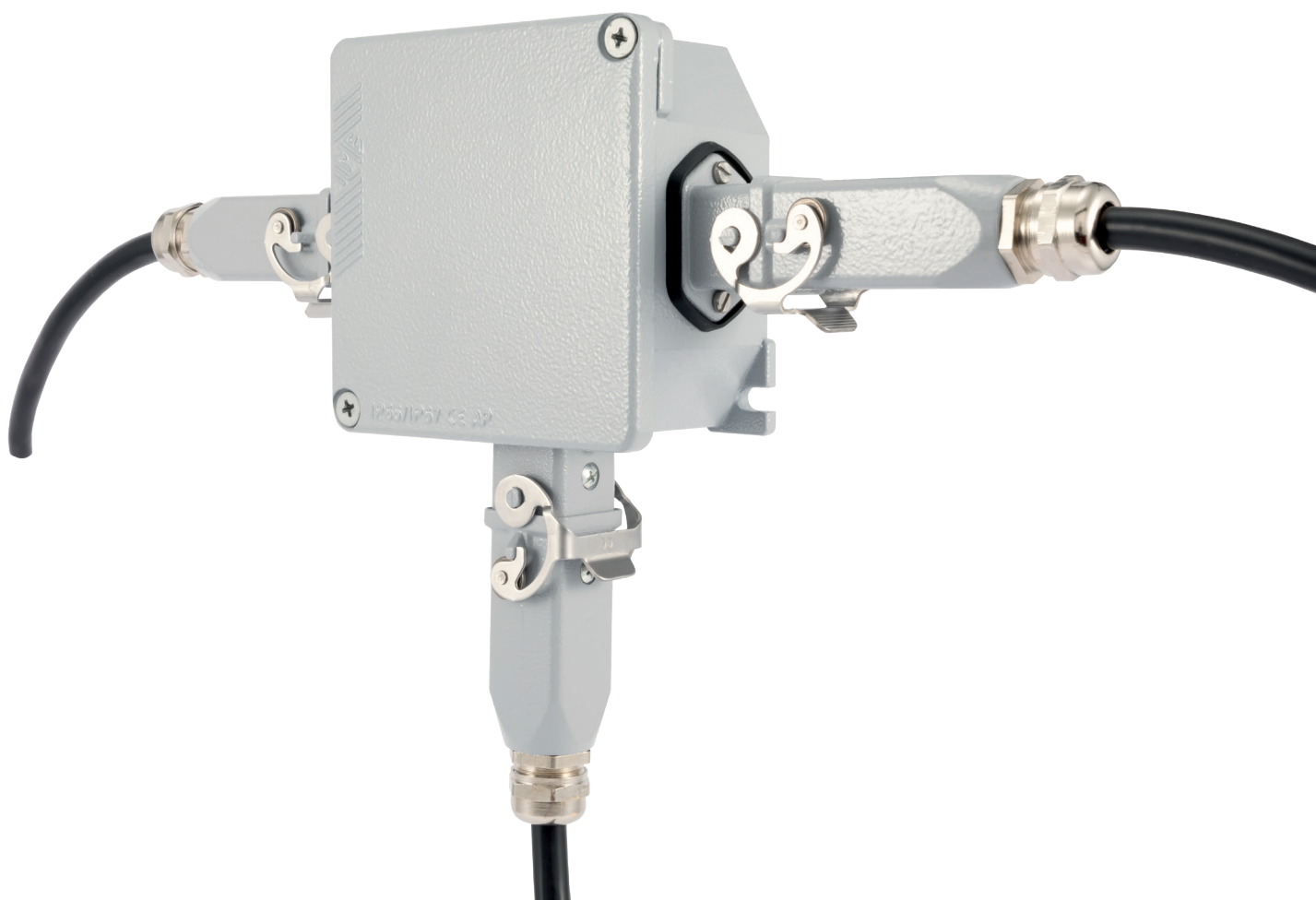
Legend:
 bulkhead mounting housings
 bulkhead mounting housings
 hoods with lever and gasket (LG)

part No.	A	B	C
CYG 06H0610	06	10	06
CYG 06H1006	10	06	06
CYG 06H0606	06	06	06
CYG 06H1010	10	10	06

SPECIAL ENCLOSURES

T-BOX

T-JUNCTION BOX FOR “21.21” INSERTS



T-junction box for the assembly of daisy-chain power and control distribution, using the small-sized “21.21” connectors



Find more
information on
our products at
www.ilme.com

TECHNICAL FEATURES

CYG 9KAXI3

This new **T-BOX** part no. **CYG 9KAXI3** special junction box provides a connectorized, compact T-junction for the assembly of typical daisy-chain power and control distribution, using the popular small-sized “21.21” connectors.

This new **T-BOX** special junction box is provided with three pre-assembled bulkhead mounting enclosures **CKAX 03 I**, with stainless steel “Class” locking levers with rolls, mounted over three suitably prepared sides of an **APV 9** IP66/IP67 junction box. Two facing connector enclosures serve the “IN-OUT” passing “bus” line (for power and/or signal) whereas the 90° connector enclosure serves the derivation line to the load.

This new **T-BOX** can house terminal blocks or twist-on wire connectors or cap terminals for easier wiring to the corresponding connectors.

Robust aluminium box and cover with formed-in-place PUR sealing gasket and epoxy-polyester coating.

Pre-assembled connector housings: 3x CKAX 03 I made by zinc alloy, with “Class” stainless steel locking lever.

Pass-through fixing screws and nuts on the flanges of the bulkhead mounting housings CKAX 03 I sealed to preserve the IP66/IP67 of the T-BOX CYG enclosure.

Zinc flake galvanized steel screws (two), M5x16, Ph2 for closing the cover, coupling torque 1 Nm (8,8 lb.in).

O-rings to make the cover screws captive, included.

Suitably sized diagonal DIN 60715 rail with fixing screws and inserts available as separate accessory (part no. **APD 9**).

PE connection terminals provided inside the box and under the metal cover; supplied with 2 brass inserts, 2 screws, 2 lugs and 2 washers for 6 mm² PE (protective earth) terminals.

The cover must always be connected to the PE (protective earth).

Two external wall fixing points (6 mm space for e.g. M5 screws) provided, diagonally placed on the box bottom.

Additional cover fastening wire, to anchor the cover to the box (temperature range: -40 °C ÷ +110 °C) available as separate accessory, part no. **APR F**.

Optional M4x8 threaded brass insert for simplifying the fitting of equipment and PCBs on the bottom of the box, part no. **APR 04** separately available.

Variants W-Type for aggressive environments (**CYGW 9KAXI3**) or S-Type “EMC” (**CYGS 9KAXI3**) available upon request.

IP66/IP67 degree of protection when inserts are equipped with CKR 65(D) kit of screwed gasket and coupled with suitably rated hoods.

robust aluminium
box and cover with
formed-in-place
PUR sealing gasket
and epoxy-polyester
coating

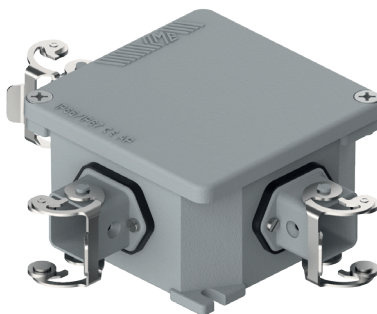


CYG box with T-junction for 21.21 inserts

inserts

Compatible with all power/signal
"21.21" size inserts

T-junction box



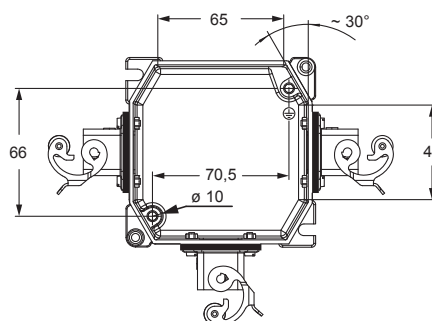
 **FROM SEPTEMBER 2020**

description

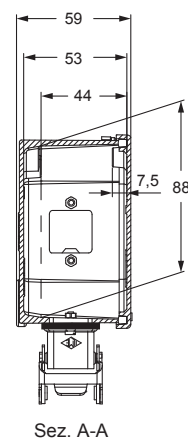
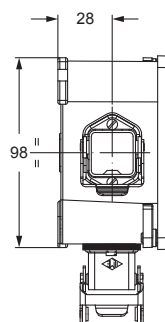
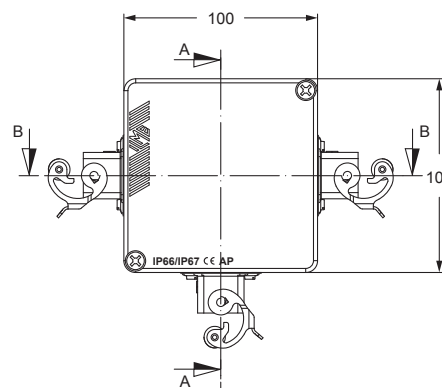
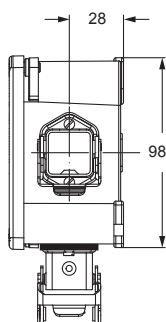
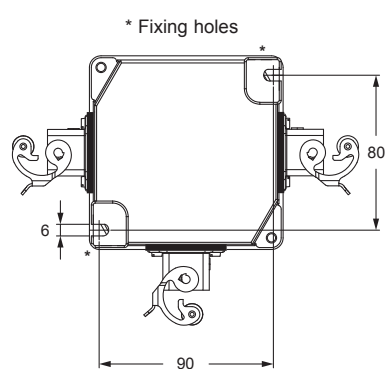
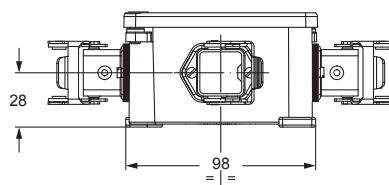
part No.

T-BOX with 3 CKAX 03 I housings pre-assembled

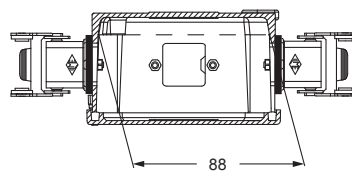
CYG 9KAXI3



Top view without cover

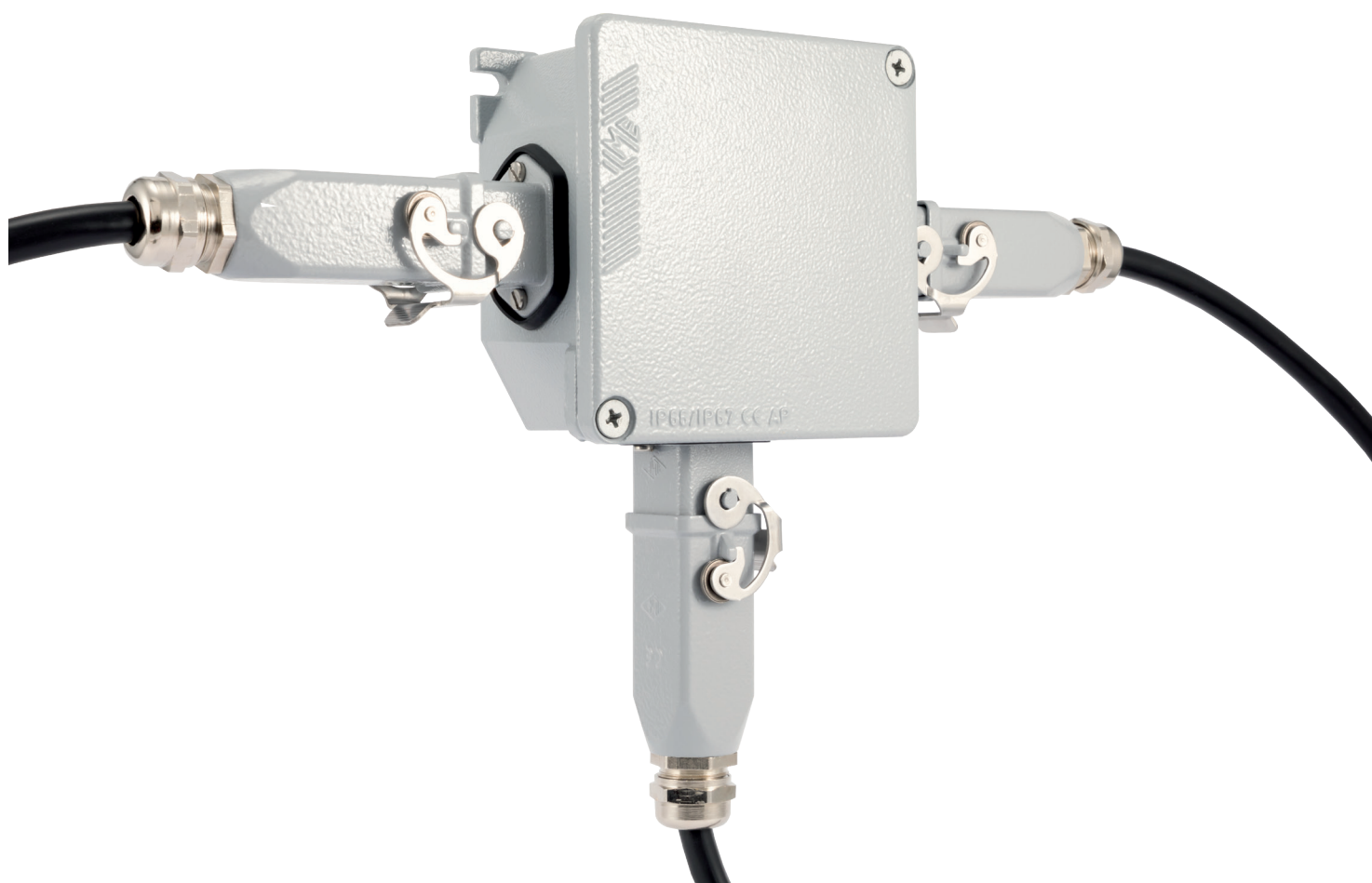


Sez. A-A

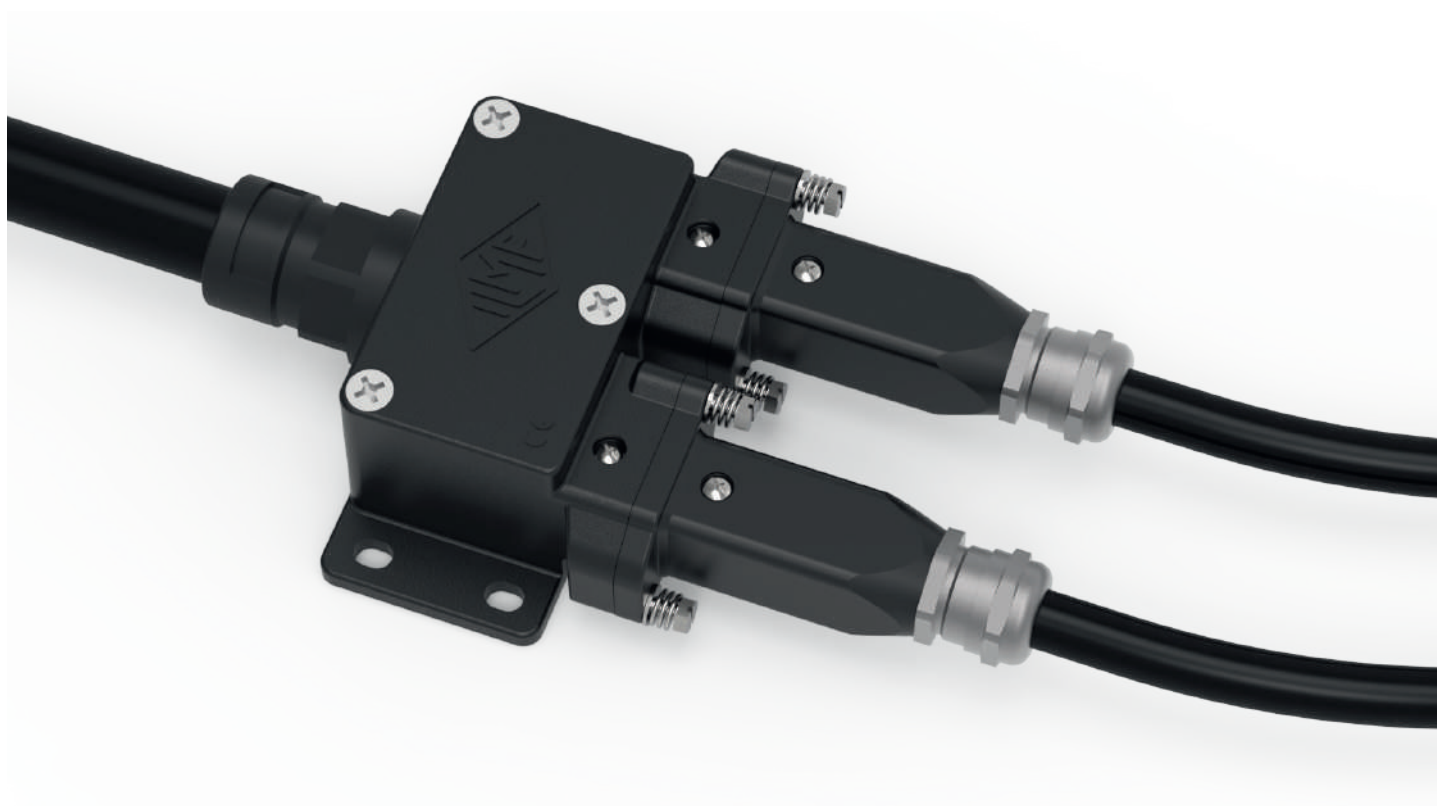


Sez. B-B

T-JUNCTION BOX - EXAMPLE OF APPLICATION



IP68 ANGLED HOUSING FOR 2 INSERTS “21.21” MGK 2AP25



New special
IP68 angled surface-mount
enclosure



Find more
information on
our products at
www.ilme.com

TECHNICAL FEATURES

MGK 2AP25



Watch
our technical
clip

The **CGK-MGK** series of size “21.21” connector enclosures with **IP68** degree of protection (as well as IPX6 and IPX9, hence IP66/IP68/IP69) is enriched by this new special angled surface-mount enclosure, consisting of a flanged box with screw cover incorporating on one side the interface of two size “21.21” bulkhead-mounting IP68 housings (mateable to two “21.21” CGK-MGK hoods) so as to host 2 connector inserts size “21.21” and on the opposite side an **M25** thread for an equally rated cable gland or conduit fitting.

IP66/IP68/IP69 degree of protection per IEC 60529.

Vibration and shock proof per EN/IEC 61373 (railway rolling stock) **category 2** (bogie mounted).

Corrosion proof surface treatment and exposed parts up to **500 h** neutral salt spray chamber test according ISO 9227.

Suitable to build up a connectorized split/derivation (one line in, two connectors out).

Suitable for wall mounting with M6 head Ø 12,5 mm max. screws (length depending on the specific application) not supplied (see instruction sheet at page 98).

Couples with corresponding connector inserts inside **CGK-MGK** hoods.

RoHS: compliant without exemptions.

suitable to build up a
connectorized split/
derivation (one line in,
two connectors out)



MGK 2AP25 for 2 inserts high protection IP68 version

inserts	page:
CK	3 and 4 poles + ⊕ 58
CKS	3 and 4 poles + ⊕ -
CKSH	3 and 4 poles + ⊕ 63
CD 1)	8 poles 67
CQ4	2 poles + ⊕ 182
CQ4 H	2 poles + ⊕ 183
CQ4	3 poles + ⊕ 184
CQ	5 poles + ⊕ 186
CQ	7 poles + ⊕ 187
CQ	12 poles + ⊕ 189
CQ	21 poles 190
CJ KF (can be used only in I enclosures)	223
CJK 8FT	226
CJK 8IFT	226, 228
CUK 2FT	236
CUK 3FT	236
CLK 04 SC	239
CX 1/2 BD	243

refer to CN.19 pages

angled bulkhead mounting housings for 2 inserts



description	part No.	entry M
with cable entry, bottom closed 2)	MGK 2AP25	25
internal PE terminal connection kit 3)	CR MBT	

1) To ensure IP68 degree of protection with CD 08 insert, purchase the kit CKR 65 D.

☑ In this case do not use the gasket and screw kit supplied with the enclosure.

2) CDF /M 07 series inserts (with pass-through protective earth contact) are suitable only by separate earthing of the housing through its internal PE terminal (CR MBT kit separately available), see note 3) below.

3) to be employed:

- for equipotential bonding connection between cover and housing PE terminals (2× required, see Instruction Sheet page 99);
- for PE connection of the housing (1× required) when used with CDF/M 07 inserts, see note 2) above

CR MBT kit consists of:

- Ø 4 mm eyelet crimp cable lug for 6 mm² max. PE wire, tin-plated brass;
- M3,5x6 self-tapping screw w/ Ph 2 head, stainless steel with Ø 4 mm washer.



CGKCP FX
dust protection cover
(page 697 CN19 catalogue)

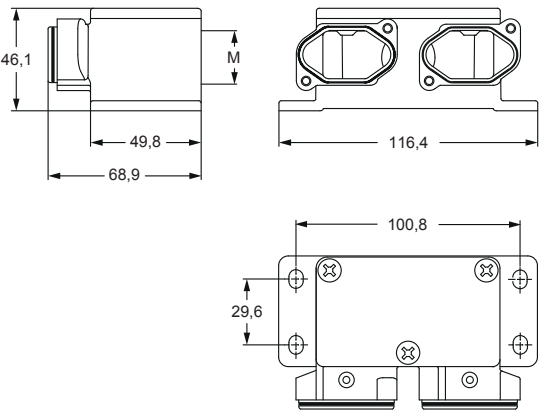


cURus
Type 4/4X/12 pending

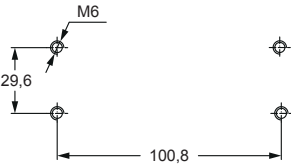


according to IEC/EN 60529

MGK 2AP25



panel cut-out for MGK 2AP25



MGK 2AP25 - ANGLED BULKHEAD MOUNTING HOUSINGS FOR 2 INSERTS "21.21"



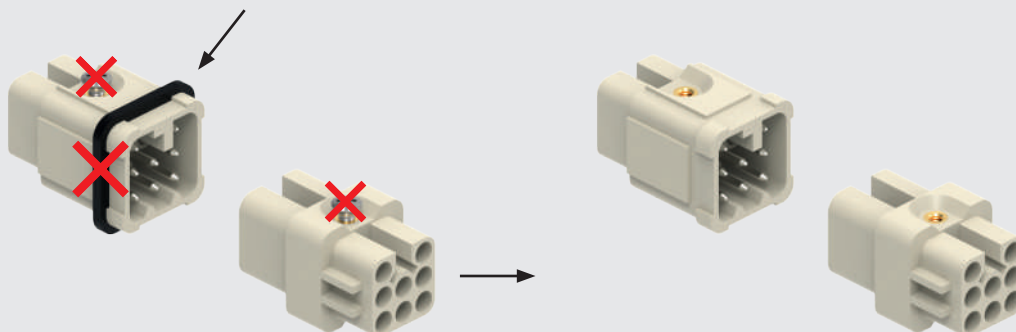
MGK 2AP25 for 2 inserts high protection IP68 version

ASSEMBLY INSTRUCTIONS

MGK 2AP25 FOR 2 INSERTS

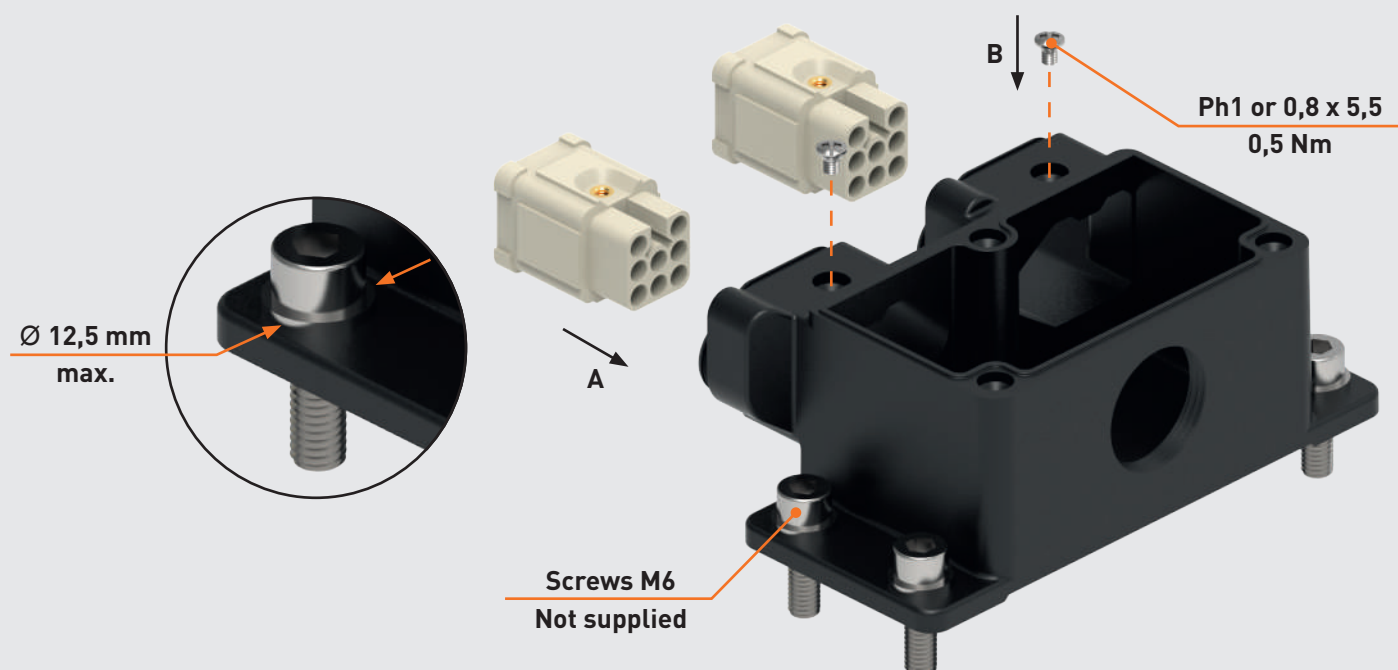
1

Remove the gasket from the male insert before use



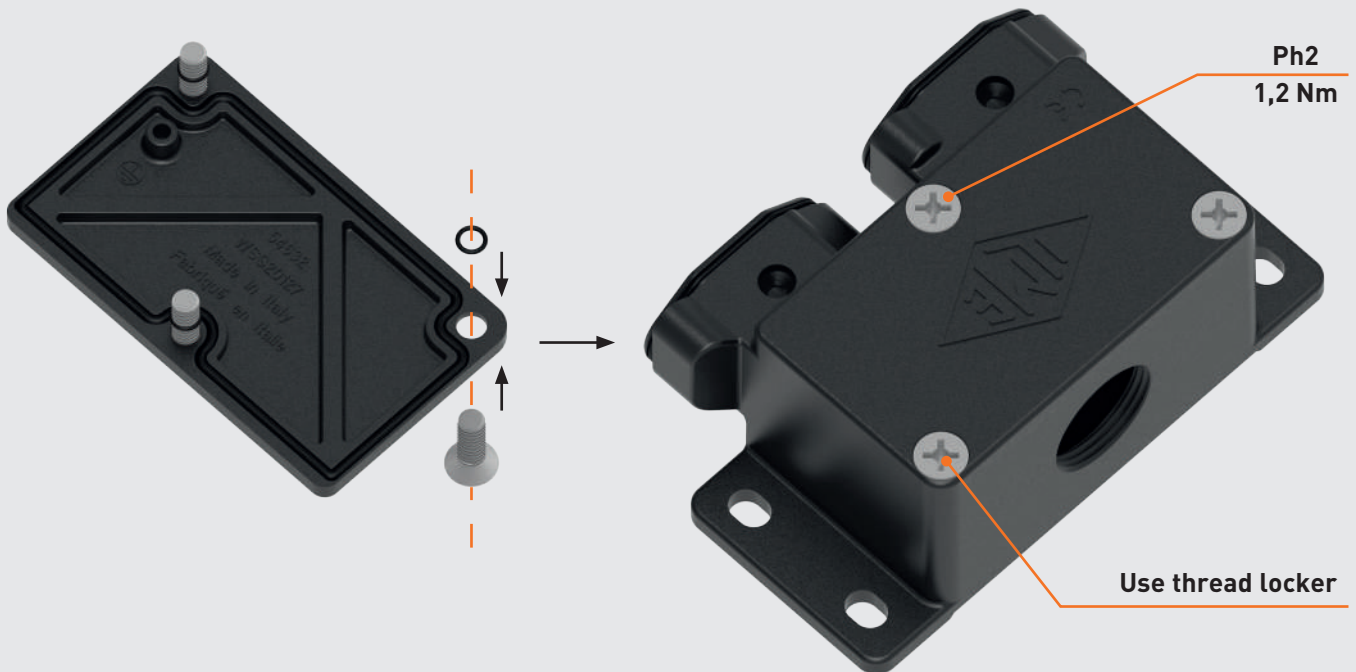
Inserts may differ from those depicted

2



ASSEMBLY INSTRUCTIONS
MGK 2AP25 FOR 2 INSERTS

3



SEPARATELY
AVAILABLE

CR MBT

1X

6 mm² max.

