

## 180 °C

## The heat shield

Series specifically developed for industrial applications where the temperatures can reach up to **180 °C**.

The aluminium die-cast unpainted enclosures are equipped with stainless steel V-Type levers and FKM red gaskets\*.

Available in the sizes "21.21", "44.27", "57.27", "77.27", "104.27", "77.62" and "104.62", to be used in combination with the ILME high-temperature connector inserts made by self-extinguishing thermoplastic material (>PPS< polyphenylene sulphide).

\* Except MKAXR IF, MKAXXR IF Ø 32 mm O-ring and MHPR 48 L40 /LS40 Ø 40 mm O-ring.



✓ **cULus** certified for USA and Canada for **Type 12** (indoor use) and **Type 4** protection ratings, marked on the packaging label. **IP44** (size "21.21"), **IP65** (other sizes) degree of protection according to **EN IEC 60529**.

#### SUM-UP OF MATERIALS USED

- ☐ Enclosure body made of die cast aluminium alloy
- ☐ Flange and interface sealing gaskets (as applicable) in FKM, anti-aging heat resistant fluoroelastomer
- ☐ Stainless steel V-Type locking mechanism
- ☐ Single-block locking lever handles in stainless steel (for "21.21" sized CKA..R /MKA..R, "44.27" sized CV..R /MV..R, "77.62" sized CH..R 32.. /MHP..R 32.. and "104.62" sized CH..R 48.. /MHP..R 48.. versions).

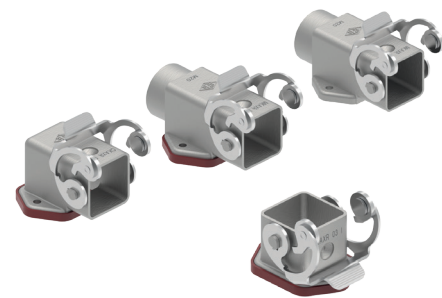


Find out  
more

CKA and MKA 180 °C version

inserts	page:
CK RY 3 poles + ⊕	60
CK RY 4 poles + ⊕	60

bulkhead mounting housings  
straight and angled



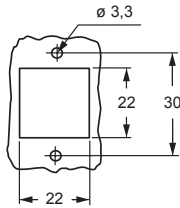
hoods



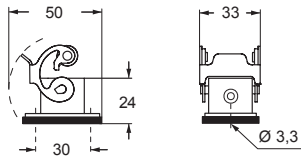
description	part No.	part No. (entry M20)	part No.	part No. (entry M20)
with stainless steel lever and gasket <sup>1)</sup>	CKAXR 03 I			
without cable entry, with stainless steel lever and gasket <sup>1)</sup>	CKAXR 03 IA			
with cable entry, with stainless steel lever and gasket <sup>1)</sup>		MKAXR IAP20		
with cable entry, with stainless steel lever, bulkhead hole closed <sup>1)</sup>		MKAXR AP20		
with pegs, top entry <sup>1)</sup>			MKAR V20	
with pegs, side entry <sup>1)</sup>			MKAR VA20	
with stainless steel lever, top entry <sup>1)</sup>			MKAXR VG20	

<sup>1)</sup> Enclosures with IP44 protection rating

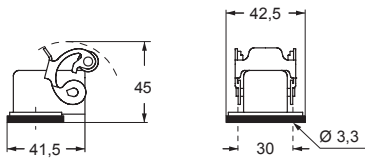
panel cut-out for bulkhead mounting housings



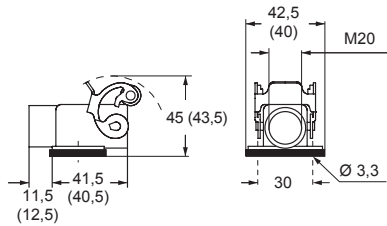
CKAXR I



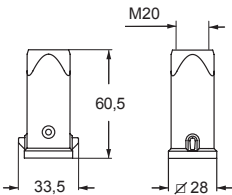
CKAXR IA



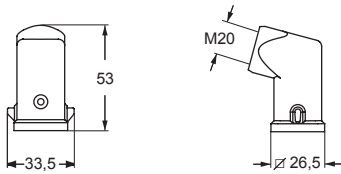
MKAXR IAP (MKAXR AP)



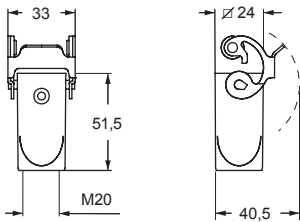
MKAR V



MKAR VA



MKAXR VG



CU<sup>®</sup> Type 12



MKAX - MKAXX 180 °C version

inserts

CK RY 3 poles + ⊕  
CK RY 4 poles + ⊕

page:

60  
60

bulkhead mounting housings  
with stainless steel lever



bulkhead mounting housings  
with stainless steel rigid lever



description

part No.  
(entry M32)

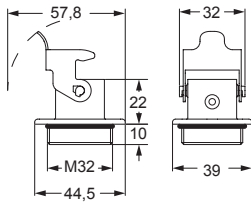
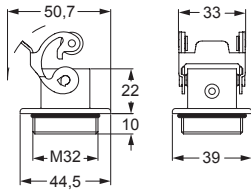
part No.  
(entry M32)

M32 fixing thread <sup>(\*)</sup>

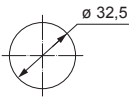
MKAXR IF

MKAXXR IF

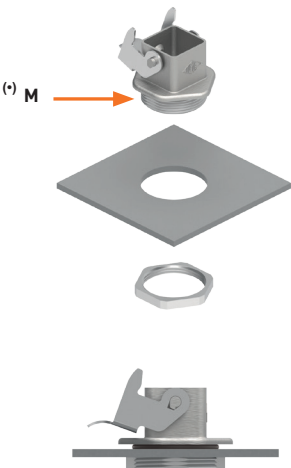
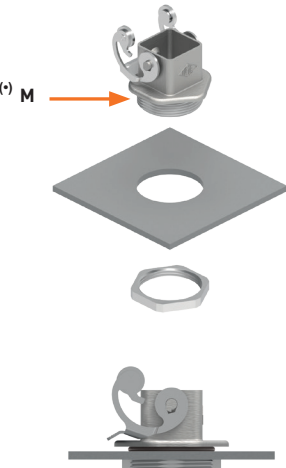
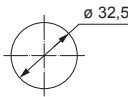
<sup>(\*)</sup> Locknut supplied on request, see Cable glands catalogue (article AS M32N metallic)



panel cut-out for enclosures



panel cut-out for enclosures



CAVUS<sup>®</sup> Type 12



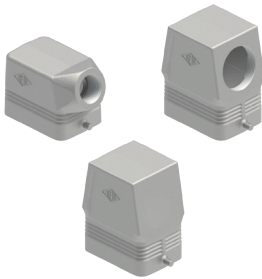
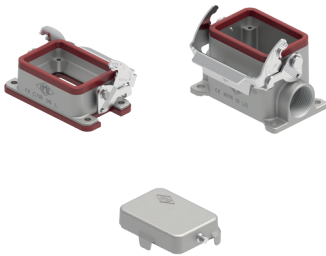


CV - MV - MVA and MH - MF 180 °C version

inserts  
CNE RY 6 poles + ⊕  
page: 116

bulkhead and surface mounting housings and cover

hoods

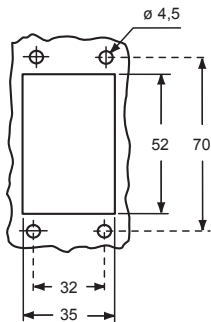


cover with lever (for hoods)  
available upon request

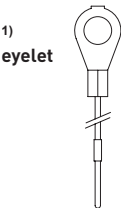
description	part No.	entry	part No.	entry M	part No.	entry	part No.	entry M
bulkhead mounting housing with lever and gasket	CVIR 06 L							
surface mounting housing, with lever			MVPR 06 L20	20				
surface mounting housing, with lever, high construction			MVAPR 06 L32	32				
cover with pegs (for enclosures) <sup>1)</sup>	CHCR 06 L							
enclosure with pegs, side entry							MHOR 06 L20	20
enclosure with pegs, side entry, high construction							MFOR 06 L32	32
enclosure with pegs, top entry <sup>2)</sup>							MHVR 06 L20	20
enclosure with pegs, top entry, high construction							MFVR 06 L32	32
enclosure with pegs, to be drilled, high construction							CACR 06 L	

<sup>2)</sup> can only be used with a complete cable gland  
(to be purchased separately)

panel cut-out for bulkhead mounting housings



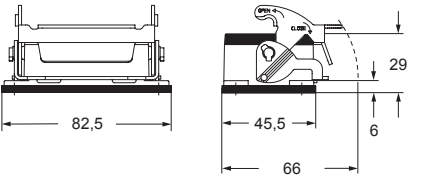
For fixing  
on housings



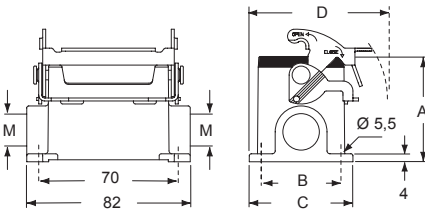
CU<sup>®</sup>US Type 4/12



CVIR L



MVPR L and MVAPR L

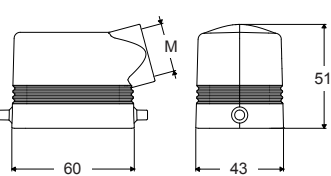


type	A	B	C	D
MVPR L	53	40	52	70
MVAPR L	74	45	57	72,5

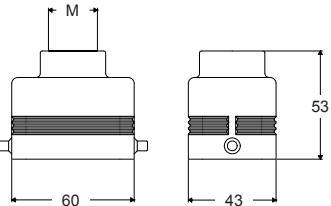
CHCR L



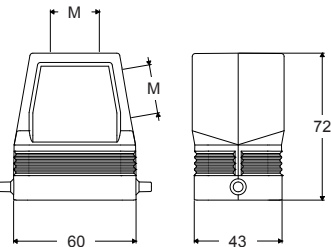
MHOR L



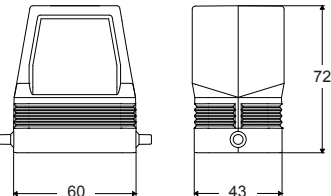
MHVR L



MFOR L and MFVR L



CACR L



inserts

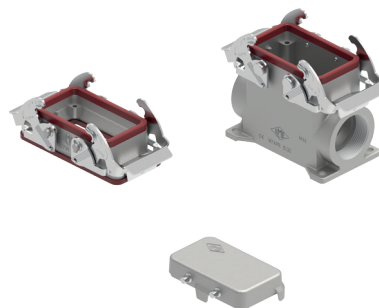
CNE RY

10 poles + ⊕

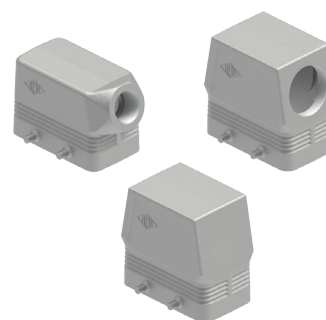
page:

117

bulkhead and surface mounting housings and cover



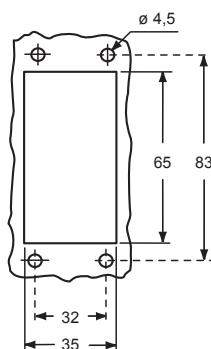
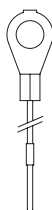
hoods

cover with 2 levers (for hoods)  
available upon request

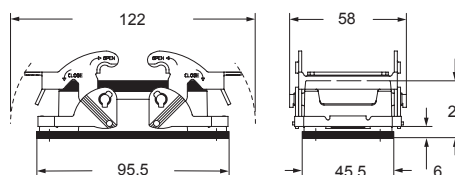
description	part No.	entry	part No.	entry M	part No.	entry	part No.	entry M
bulkhead mounting housing with levers and gasket	<b>CVIR 10</b>							
surface mounting housing, with levers			<b>MVPR 10.20</b>	20				
surface mounting housing, with levers, high construction			<b>MVAPR 10.32</b>	32				
cover with 4 pegs (for enclosures) <sup>1)</sup>	<b>CHCR 10</b>							
enclosure with pegs, side entry							<b>MHOR 10.20</b>	20
enclosure with pegs, side entry, high construction							<b>MFOR 10.32</b>	32
enclosure with pegs, top entry <sup>2)</sup>							<b>MHVR 10.20</b>	20
enclosure with pegs, top entry, high construction							<b>MFVR 10.32</b>	32
enclosure with pegs, to be drilled, high construction							<b>CACR 10</b>	

<sup>2)</sup> can only be used with a complete cable gland  
(to be purchased separately)

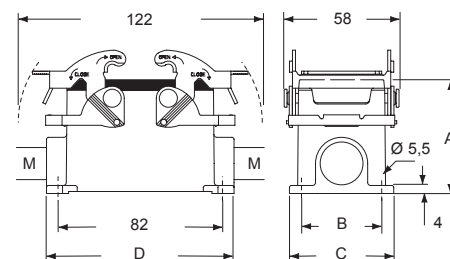
panel cut-out for bulkhead mounting housings

For fixing  
on housings1)  
eyeletC<sup>®</sup>ALUSType  
4/12

CVIR



MVPR and MVAPR

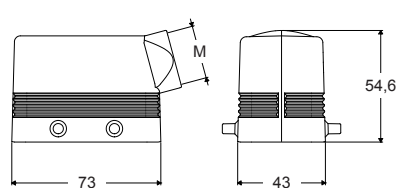


type	A	B	C	D
MVPR	57	40	52	93,5
MVAPR	74	45	57	94

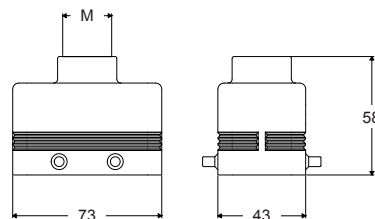
CHCR



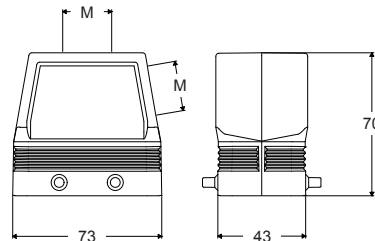
MHOR



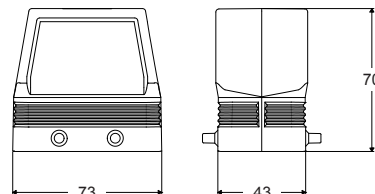
MHVR



MFOR and MFVR



CACR

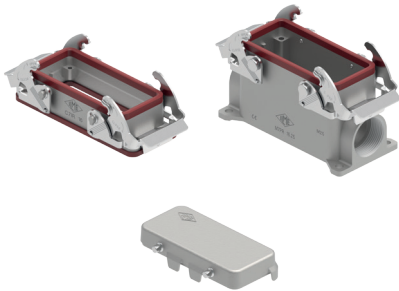


CV - MV - MVA and MH - MF 180 °C version

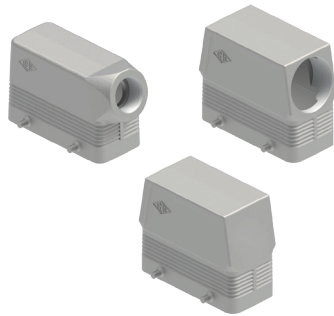
inserts		page:
CNE RY	16 poles + ⊕	118
CP RY	6 poles + ⊕	178
CX RY	4/0 and 4/2 poles + ⊕	202 - 203

cover with 2 levers (for hoods)  
available upon request

bulkhead and surface mounting housings  
and cover

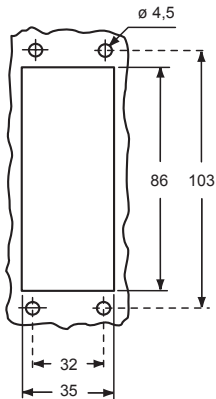


hoods

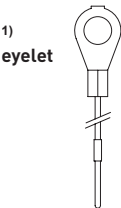


description	part No.	entry	part No.	entry M	part No.	entry	part No.	entry M
bulkhead mounting housing with levers and gasket	<b>CVIR 16</b>							
surface mounting housing, with levers			<b>MVPR 16.25</b>	25				
surface mounting housing, with levers, high construction			<b>MVAPR 16.32</b>	32				
cover with 4 pegs (for enclosures) 1)	<b>CHCR 16</b>							
enclosure with pegs, side entry							<b>MHOR 16.25</b>	25
enclosure with pegs, side entry, high construction							<b>MFOR 16.40</b>	40
enclosure with pegs, top entry							<b>MHVR 16.25</b>	25
enclosure with pegs, top entry, high construction							<b>MFVR 16.40</b>	40
enclosure with pegs, to be drilled, high construction								

panel cut-out for bulkhead mounting housings



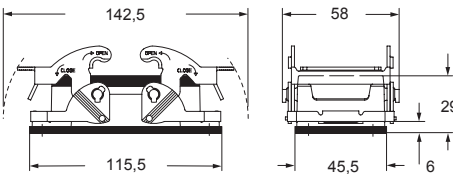
For fixing  
on housings



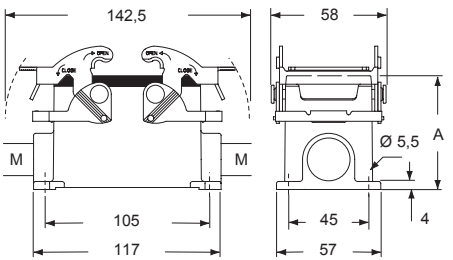
**CALUS** Type  
4/12



CVIR

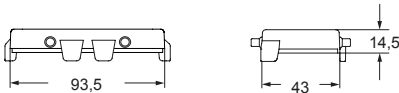


MVPR and MVAPR

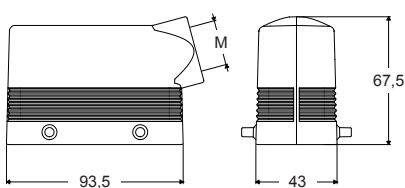


type	A
MVPR	63
MVAPR	81

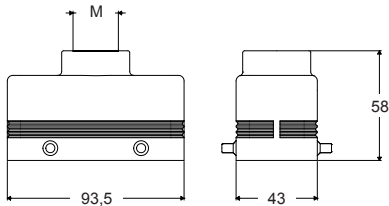
CHCR



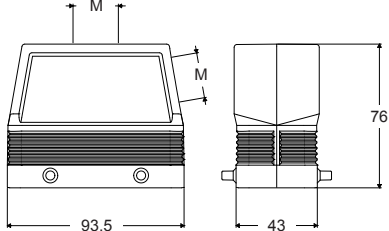
MHOR



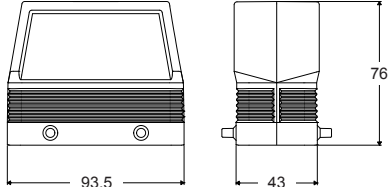
MHVR



MFOR and MFVR



CACR



## CV - MV - MVA and MH - MF 180 °C version

inserts

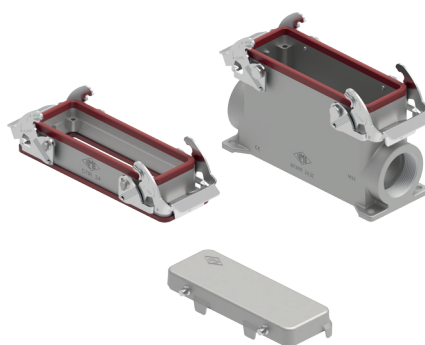
CNE RY  
CX RY

24 poles +   
4/8 poles + 

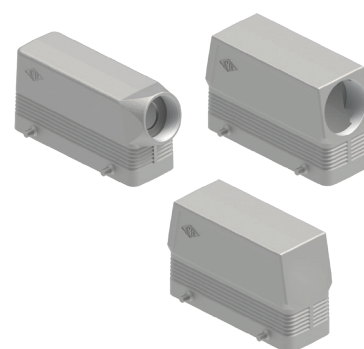
page:

119  
204

**bulkhead and surface mounting housings  
and cover**



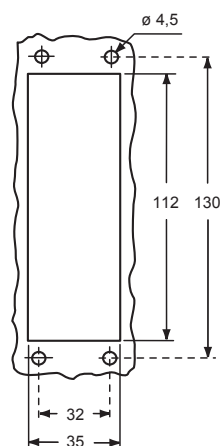
## hoods



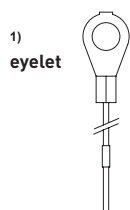
**cover with 2 levers (for hoods)  
available upon request**

description	part No.	entry	part No	entry M	part No.	entry	part No.	entry M
bulkhead mounting housing with levers and gasket	<b>CVIR 24</b>							
surface mounting housing, with levers			<b>MVPR 24.25</b>	25				
surface mounting housing, with levers, high construction			<b>MVAPR 24.32</b>	32				
surface mounting housing, with levers, high construction			<b>MVAPR 24.40</b>	40				
cover with 4 pegs (for enclosures) <sup>1)</sup>	<b>CHCR 24</b>							
enclosure with pegs, side entry							<b>MHOR 24.25</b>	25
enclosure with pegs, side entry							<b>MHOR 24.32</b>	32
enclosure with pegs, side entry, high construction							<b>MFOR 24.32</b>	32
enclosure with pegs, side entry, high construction							<b>MFOR 24.40</b>	40
enclosure with pegs, top entry							<b>MHVR 24.25</b>	25
enclosure with pegs, top entry, high construction							<b>MFVR 24.40</b>	40
enclosure with pegs, to be drilled, high construction					<b>CACR 24</b>			

panel cut-out for bulkhead mounting housings



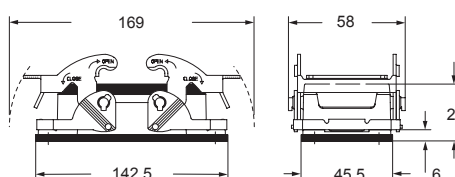
### For fixing on housings



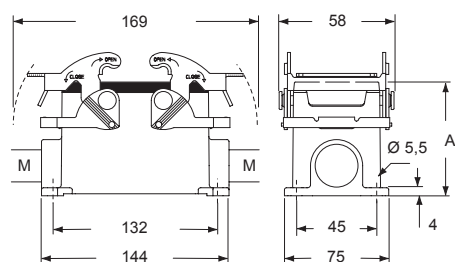
**CRUS** Type 4/12



**CVIR**

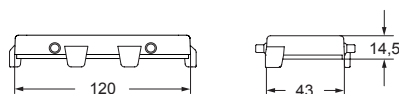


## MVPR and MVAPR

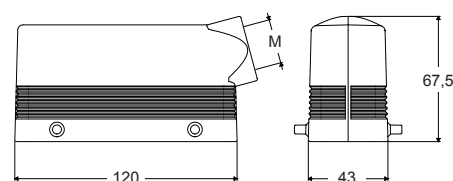


type	A
MVPR	63
MVAPR	81

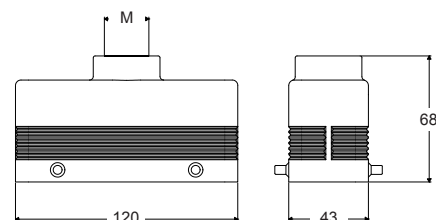
## CHCR



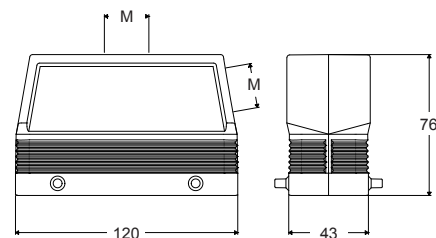
## MHOR



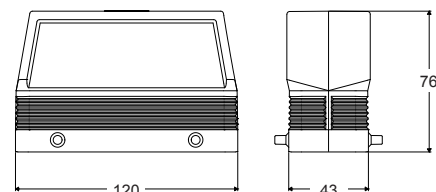
**MHVR**



### MFOR and MFVR



## CACR



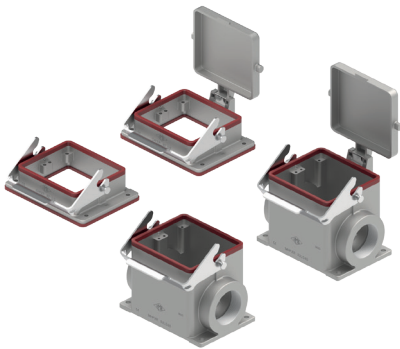


CH - MH and MF 180 °C version

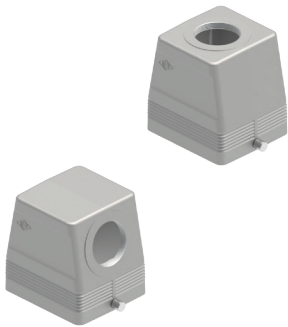
inserts		page:
CNE RY	2 × 16 poles + ⊕	118
CP RY	2 × 6 poles + ⊕	178
CX 4/0 RY	2 × 4/0 poles + ⊕	202
CX 4/2 RY	2 × 4/2 poles + ⊕	203

insert dimensions:  
2 × “77.27”

bulkhead and surface mounting housings

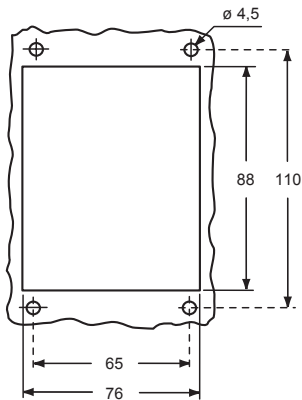


hoods

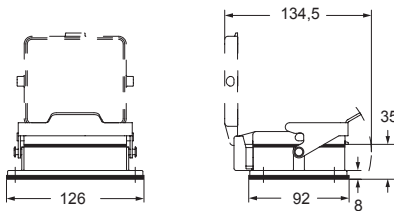


description	part No.	entry	part No.	entry M	part No.	entry	part No.	entry M
bulkhead mounting housing, with lever	CHIR 32 L							
bulkhead mounting housing, with lever and cover	CHIR 32 LS							
surface mounting housing, with lever			MHPR 32 L40	40			MFOR 32 L40	40
surface mounting housing, with lever and cover			MHPR 32 LS40	40			MFVR 32 L40	40
enclosure with pegs, side entry, high construction								
enclosure with pegs, top entry, high construction								

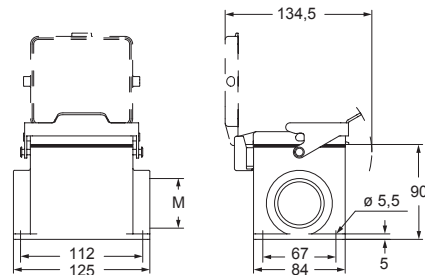
panel cut-out for bulkhead mounting housings



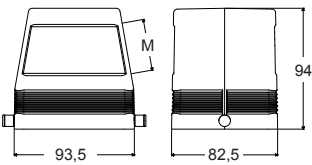
CHIR L and CHIR LS



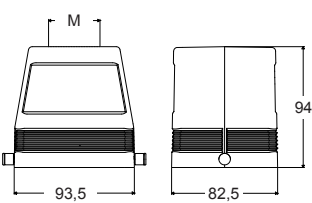
MHPR L and MHPR LS



MFOR L



MFVR L



CALUS<sup>®</sup> Type 4/12





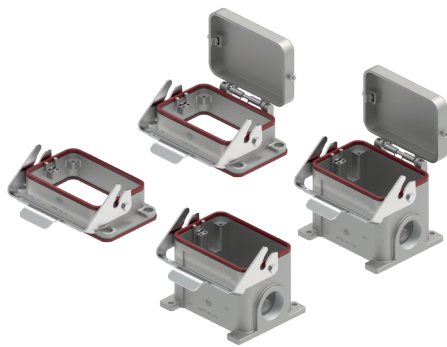
Enclosures size “104.62”

CH - MH and MF 180 °C version

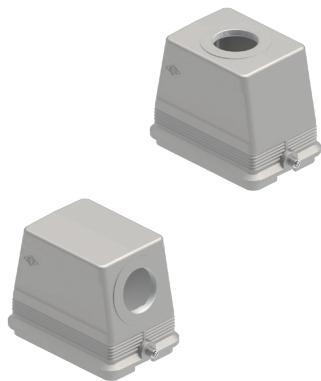
inserts		page:
CNE RY	48 poles + ⊕	120
CX 4/8 RY	2 × 4/8 poles + ⊕	204

insert dimensions:  
2 × “104.27”

bulkhead and surface mounting housings

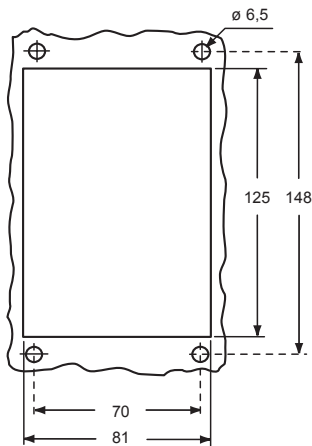


hoods

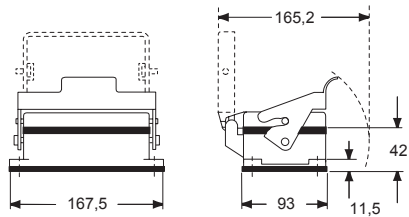


description	part No.	entry	part No.	entry M	part No.	entry	part No.	entry M
bulkhead mounting housing, with lever	CHIR 48 L							
bulkhead mounting housing, with lever and cover	CHIR 48 LS							
surface mounting housing, with lever	MHPR 48 L40	2 × M40						
surface mounting housing, with lever and cover	MHPR 48 LS40	2 × M40						
enclosure with pegs, side entry							MFOR 48 L40	1 × M40
enclosure with pegs, top entry							MFVR 48 L40	1 × M40

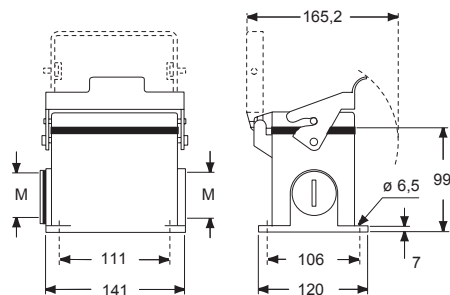
panel cut-out for bulkhead mounting housings



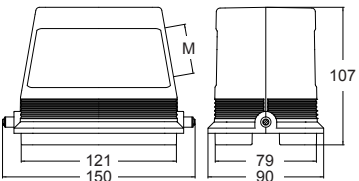
CHIR L and CHIR LS



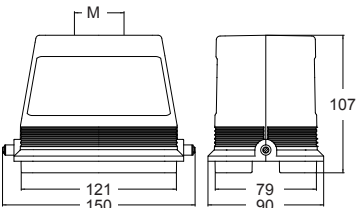
MHPR L and MHPR LS



MFOR L



MFVR L



**CALUS** Type 4/12

