

## W-TYPE

### ENCLOSURES for aggressive environments

### A cornerstone against corrosion

Series W-TYPE connector enclosures for aggressive environments is specially **designed for industrial applications where particularly aggressive external agents are present** (e.g. salty environments, etc.).

The range includes enclosures in the 7 basic sizes (size 21.21 for CKA..W and MKA..W models, sizes 44.27, 57.27, 77.27 and 104.27 for CH..W, CA..W and MH..W, MA..W models, sizes 49.16 and 66.16 for CZ..W and MZ..W models) and in the 3 double sizes (sizes 66.40 also known as 50 poles, 77.62 a.k.a. 32 poles, 104.62 a.k.a. 48 poles).

Series W-TYPE enclosures may be bulkhead mounting, surface-mounting or hood type with side or top entry. They are **distinguished by the jet black RAL 9005 colour** and have the following characteristics:

- **chromate conversion treatment of castings** RoHS 2 compliant, providing **50% improved corrosion in resistance in salt spray tests** (according to UNI EN ISO 9227) compared to the previous green coloured versions;
- **thermosetting epoxy powder coating** (with improved resistance to chemicals compared to epoxy polyester of the standard enclosures series);
- **FKM fluoroelastomer gaskets** (with improved resistance to chemicals and aging);
- **ambient temperature limits from -40 °C to +125 °C.**

Other constructional characteristics are:

#### 1) CKA..W and MKA..W series

- 21.21 inserts size
- stainless steel monoblock locking lever

#### 2) CH..W, CA..W and MH..W, MA..W series

- 44.27, 57.27, 77.27, 104.27, single inserts sizes and 77.62, 104.62, 66.40 double inserts sizes;
- CLASS type locking levers (stainless steel lever body, springs and pins, lever handle by fibreglass reinforced thermoplastic material);
- stainless steel riveted pegs;
- supplementary insulation inside enclosures.

#### 3) CZ..W and MZ..W series

- 49.16, 66.16 inserts size;
- stainless steel monoblock locking lever (body, handle, springs), rolls and pins;
- stainless steel riveted pegs;
- supplementary insulation inside enclosures.



Series **W-TYPE** enclosures are approved by UL with **cULus** Recognized Component mark for USA and Canada, with protection type ratings **UL Type 4 (= NEMA 4)**, **UL Type 4X (= NEMA 4X)** and **UL Type 12 (= NEMA 12)** according to the American standard ANSI/UL 50 and ANSI/UL 50E and the corresponding Canadian Standards CSA C22.2 No.94.1 and CSA C22.2 No.94.2.

Upon connector complete and fitted with suitably rated cable glands or conduit fittings, series **W-TYPE** enclosures guarantee a **degree of protection IP44** (for size 21.21, **IP66/IP67** using CKR 65(D) kit), or **IP66** (all other sizes) as well as **IP69** according to EN 60529 (the IPX9 test recently added to this standard covers resistance to high pressure and temperature water jetting, jets applied at 80 °C (± 5 °C) at a pressure of 80 bar to 100 bar, 30 s for each angle of inclination 0°, 30°, 60° and 90° with reference to the horizontal plane).

Series **W-TYPE** enclosures **can accommodate all connector inserts** with either crimp, screw, spring or the innovative **SQUICH®** connection.

Series **W-TYPE** enclosures, being not equipped with internal tabs and thanks to the additional insulation strips placed inside, are **also suitable for series CME 830V rated inserts.**

# CKA - MKA W-TYPE for aggressive environments

inserts		page:
CK	3 poles + ⊕	58
CK	4 poles + ⊕	58
CKS	3 poles + ⊕	-
CKS	4 poles + ⊕	-
CKSH	3 poles + ⊕	63
CKSH	4 poles + ⊕	63
CD	8 poles	67
CQ4	2 poles + ⊕	182
CQ4 H	2 poles + ⊕	183
CQ4	3 poles + ⊕	184
CQ	5 poles + ⊕	186
CQ	7 poles + ⊕	187
CQ	12 poles + ⊕	189
CQ	21 poles	190

## bulkhead mounting housings straight and angled



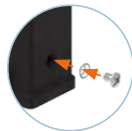
## hoods



description	part No. (entry Pg 11)	part No. (entry M20)	part No. (entry Pg 11)	part No. (entry M20 / M25)
with stainless steel lever and gasket	<b>CKAXW 03 I</b>			
without cable entry, with stainless steel lever and gasket	<b>CKAXW 03 IA</b>			
with cable entry, with stainless steel lever and gasket	<b>CKAXW 03 IAP</b>	<b>MKAXW IAP20</b>		
with cable entry, with stainless steel lever and gasket, bulkhead hole closed	<b>CKAXW 03 AP</b>	<b>MKAXW AP20</b>		
with pegs, top entry			<b>CKAW 03 V</b>	<b>MKAW V20</b>
with pegs, top entry			<b>CKAW 03 VA</b>	<b>MKAW V25</b>
with pegs, side entry			<b>CKAXW 03 VG</b>	<b>MKAXW VG20</b>
with stainless steel lever, top entry			<b>CKR 65</b>	<b>CKR 65 D</b>
gasket and screw kit for IP66/IP67/IP69 1)	<b>CKR 65</b>		<b>CKR 65</b>	
for CK, CKSH, CQ4, CQ inserts				
gasket and screw kit for IP66/IP67/IP69 1)	<b>CKR 65 D</b>		<b>CKR 65 D</b>	
for CD 08 inserts				

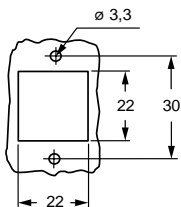
1) To obtain the IP66/IP67/IP69 degree of protection, a kit with insert fixing screw and gasket can be purchased separately. Several inserts size "21.21" are already supplied with fixing screw and gasket, which ensures IP66/IP67/IP69 degree of protection. See list below, not including any special version:  
- CQF/M 07, CQF/M 12

NOTE: Housing type may vary upon specific part No.

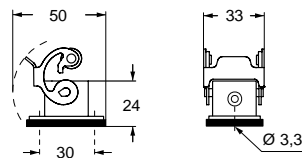


versions with glued gasket (DESINA®) upon request

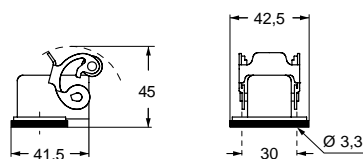
panel cut-out for bulkhead mounting housings



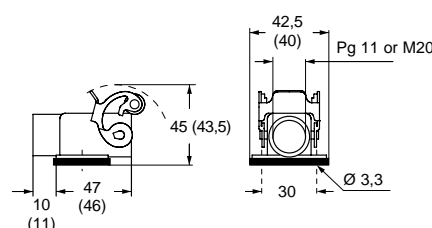
### CKAXW I



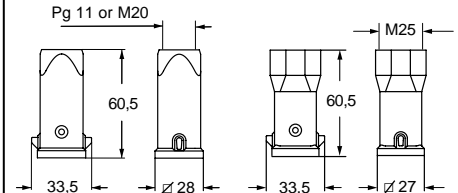
### CKAXW IA



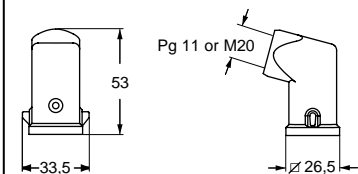
### CKAXW IAP (CKAXW AP) and MKAXW IAP (MKAXW AP)



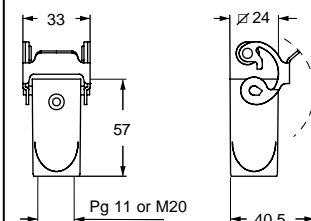
### CKAW V and MKAW V20 - V25



### CKAW VA and MKAW VA



### CKAXW VG and MKAXW VG



**CAIUS** Type 12  
Type 4/4X only  
with CKR 65 (D)



IP66/IP67/IP69 with CKR 65 (D) 1)

W-TYPE

# CKAX - CKAXX W-TYPE for aggressive environments

inserts		page:
CK	3 poles + ⊕	58
CK	4 poles + ⊕	58
CKS	3 poles + ⊕	-
CKS	4 poles + ⊕	-
CKSH	3 poles + ⊕	63
CKSH	4 poles + ⊕	63
CD	8 poles	67
CQ4	2 poles + ⊕	182
CQ4 H	2 poles + ⊕	183
CQ4	3 poles + ⊕	184
CQ	5 poles + ⊕	186
CQ	7 poles + ⊕	187
CQ	12 poles + ⊕	189
CQ	21 poles	190

## angled bulkhead mounting housings stainless steel lever



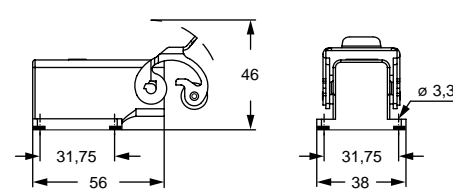
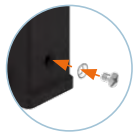
## angled bulkhead mounting housings stainless steel rigid lever



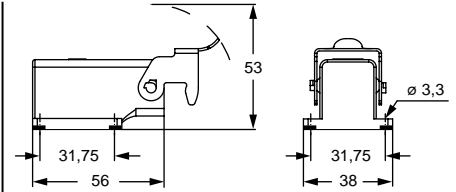
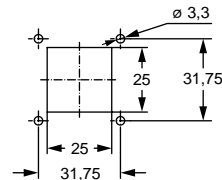
description	part No.	part No.
without cable entry, fixing by 4 screws	<b>CKAXW 03 IA4</b>	<b>CKAXXW 03IA4</b>
gasket and screw kit for IP66/IP67/IP69 <sup>1)</sup> for CK, CKSH, CQ4, CQ inserts	<b>CKR 65</b>	<b>CKR 65</b>
gasket and screw kit for IP66/IP67/IP69 <sup>1)</sup> for CD 08 inserts	<b>CKR 65 D</b>	<b>CKR 65 D</b>

<sup>1)</sup> To obtain the IP66/IP67/IP69 degree of protection, a kit with insert fixing screw and gasket can be purchased separately.  
Several inserts size "21.21" are already supplied with fixing screw and gasket, which ensures IP66/IP67/IP69 degree of protection. See list below, not including any special version:  
- CQF/M 07, CQF/M 12

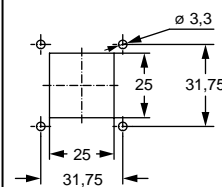
NOTE: Housing type may vary upon specific part No.



panel cut-out for enclosures



panel cut-out for enclosures



IP66/IP67/IP69 with CKR 65 (D) <sup>1)</sup>

# MKAX W-TYPE for aggressive environments

inserts	page:
CK 3 and 4 poles + ⊕	58
CKS 3 and 4 poles + ⊕	-
CKSH 3 and 4 poles + ⊕	63
CD 8 poles	67
CQ4 2 poles + ⊕	182
CQ4 H 2 poles + ⊕	183
CQ4 3 poles + ⊕	184
CQ 5 poles + ⊕	186
CQ 7 poles + ⊕	187
CQ 12 poles + ⊕	189
CQ 21 poles	190

if the counterpart has glued gasket:

CLK 04 SC	239
CX 1/2 BD	243
CXL 2/4 PF/PM	251
CXL 2/4 PFH/PMH	251
CXL PF/PM	251

## angled surface mounting housings stainless steel lever



## angled surface mounting housings stainless steel lever

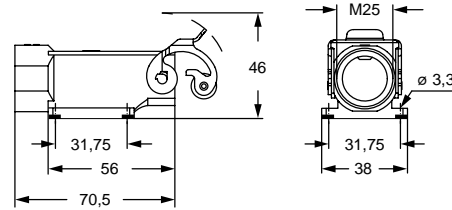
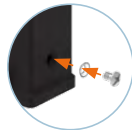


description	part No. (entry M25)	part No. (entry M25)
with cable entry, fixing by 4 screws	<b>MKAXW IAP25</b>	
with cable entry, fixing by 4 screws, bulkhead hole closed (without gasket)		<b>MKAXW AP25</b>
gasket and screw kit for IP66/IP67/IP69 <sup>1)</sup> for CK, CKSH, CQ4, CQ, inserts	<b>CKR 65</b>	<b>CKR 65</b>
gasket and screw kit for IP66/IP67/IP69 <sup>1)</sup> for CD 08 inserts	<b>CKR 65 D</b>	<b>CKR 65 D</b>

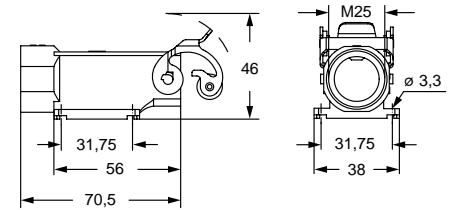
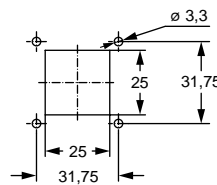
<sup>1)</sup> To obtain the IP66/IP67/IP69 degree of protection, a kit with insert fixing screw and gasket can be purchased separately. Several inserts size "21.21" are already supplied with fixing screw and gasket, which ensures IP66/IP67/IP69 degree of protection. See list below, not including any special version:

- CQF/M 07, CQF/M 12
- CUK 2FT /3FT
- CX 1/2 BDF/M
- CLK 04 SCF /SCF-H /SCM
- CXL 2/4 PF /PM /PFH /PMH, CXL PF/PM

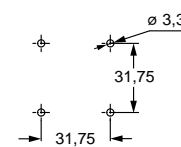
NOTE: Housing type may vary upon specific part No.



panel cut-out for enclosures



panel cut-out for enclosures



IP44 IP66/IP67/IP69 with CKR 65 (D) <sup>1)</sup>

# MKAXX W-TYPE for aggressive environments

inserts		page:
CK	3 and 4 poles + ⊕	58
CKS	3 and 4 poles + ⊕	-
CKSH	3 and 4 poles + ⊕	63
CD	8 poles	67
CQ4	2 poles + ⊕	182
CQ4 H	2 poles + ⊕	183
CQ4	3 poles + ⊕	184
CQ	5 poles + ⊕	186
CQ	7 poles + ⊕	187
CQ	12 poles + ⊕	189
CQ	21 poles	190

if the counterpart has glued gasket:

CLK 04 SC	239
CX 1/2 BD	243
CXL 2/4 PF/PM	251
CXL 2/4 PFH/PMH	251
CXL PF/PM	251

## angled surface mounting housings stainless steel rigid lever



## angled surface mounting housings stainless steel rigid lever

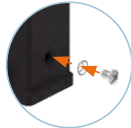


description	part No. (entry M25)	part No. (entry M25)
with cable entry, fixing by 4 screws	<b>MKAXXW IAP25</b>	
with cable entry, fixing by 4 screws, bulkhead hole closed (without gasket)		<b>MKAXXW AP25</b>
gasket and screw kit for IP66/IP67 <sup>1)</sup> for CK, CKSH, CQ4, CQ, inserts	<b>CKR 65</b>	<b>CKR 65</b>
gasket and screw kit for IP66/IP67 <sup>1)</sup> for CD 08 inserts	<b>CKR 65 D</b>	<b>CKR 65 D</b>

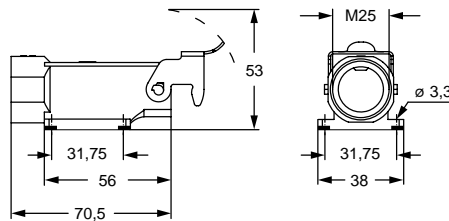
<sup>1)</sup> To obtain the IP66/IP67/IP69 degree of protection, a kit with insert fixing screw and gasket can be purchased separately. Several inserts size "21.21" are already supplied with fixing screw and gasket, which ensures IP66/IP67/IP69 degree of protection. See list below, not including any special version:

- CQF/M 07, CQF/M 12
- CUK 2FT /3FT
- CX 1/2 BDF/M
- CLK 04 SCF /SCF-H /SCM
- CXL 2/4 PF /PM /PFH /PMH, CXL PF/PM

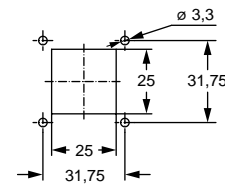
NOTE: Housing type may vary upon specific part No.



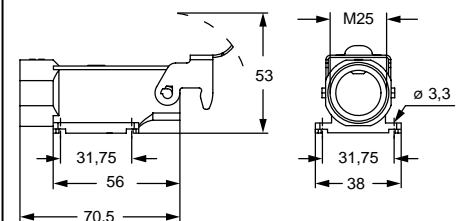
### MKA IAP



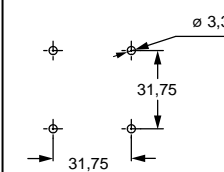
### panel cut-out for enclosures



### MKAXX IAP



### panel cut-out for enclosures



IP44 IP66/IP67/IP69 with CKR 65 (D) <sup>1)</sup>

# MKAX W-TYPE for aggressive environments

inserts	page:
CK 3 and 4 poles + ⊕	58
CKS 3 and 4 poles + ⊕	-
CKSH 3 and 4 poles + ⊕	63
CD 8 poles	67
CQ4 2 poles + ⊕	182
CQ4 H 2 poles + ⊕	183
CQ4 3 poles + ⊕	184
CQ 5 poles + ⊕	186
CQ 7 poles + ⊕	187
CQ 12 poles + ⊕	189
CQ 21 poles	190

if the counterpart has glued gasket:

CJ KF	223
CJK 8FT	226
CLK 04 SC	239
CX 1/2 BD	243
CXL 2/4 SF/SM	250
CXL SF/SM	250
CXL 2/4 PF/PM	251
CXL 2/4 PFH/PMH	251
CXL PF/PM	251

## bulkhead mounting housings stainless steel lever

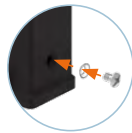


description	part No. (entry M32)
M32 fixing thread (*) 1)	<b>MKAXW IF</b>
gasket and screw kit for IP66/IP67/IP69 1)	<b>CKR 65</b>
gasket and screw kit for IP66/IP67/IP69 1) specific for CD 08 inserts	<b>CKR 65 D</b>

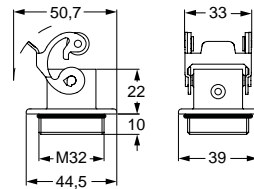
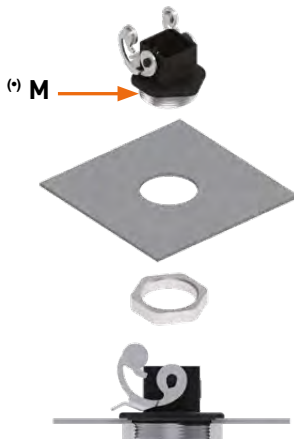
1) To obtain the IP66/IP67/IP69 degree of protection, a kit with insert fixing screw and gasket can be purchased separately. Several inserts size "21.21" are already supplied with fixing screw and gasket, which ensures IP66/IP67/IP69 degree of protection. See list below, not including any special version:

- CQF/M 07, CQF/M 12
- CJ KF
- CJK 8FT
- CX 1/2 BDF/M
- CLK 04 SCF /SCF-H /SCM
- CXL 2/4 PF /PM /PFH /PMH /SF /SM, CXL SF/M
- CXL PF /PM

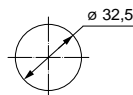
NOTE: Housing type may vary upon specific part No.



(\*) Locknut supplied on request, see Cable glands catalogue (article AS M32N metallic).



panel cut-out for enclosures



cURus  
Type 4/4X/12 pending



IP66/IP67/IP69 with CKR 65 (D) 1)

# MKAXX W-TYPE for aggressive environments

inserts		page:
CK	3 and 4 poles + ⊕	58
CKS	3 and 4 poles + ⊕	-
CKSH	3 and 4 poles + ⊕	63
CD	8 poles	67
CQ4	2 poles + ⊕	182
CQ4 H	2 poles + ⊕	183
CQ4	3 poles + ⊕	184
CQ	5 poles + ⊕	186
CQ	7 poles + ⊕	187
CQ	12 poles + ⊕	189
CQ	21 poles	190

if the counterpart has glued gasket:

CJ KF	223
CJK 8FT	226
CLK 04 SC	239
CX 1/2 BD	243
CXL 2/4 SF/SM	250
CXL SF/SM	250
CXL 2/4 PF/PM	251
CXL 2/4 PFH/PMH	251
CXL PF/PM	251

## bulkhead mounting housings stainless steel rigid lever

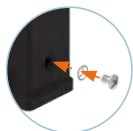


description	part No. (entry M32)
M32 fixing thread (*) 1)	<b>MKAXXW IF</b>
gasket and screw kit for IP66/IP67/IP69 1)	<b>CKR 65</b>
gasket and screw kit for IP66/IP67/IP69 1) specific for CD 08 inserts	<b>CKR 65 D</b>

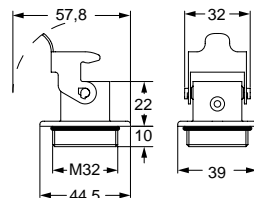
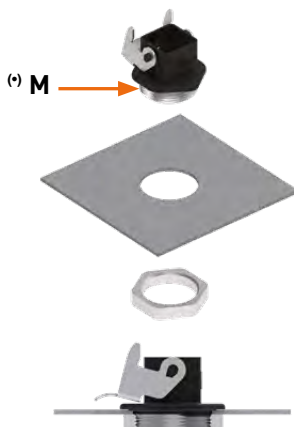
1) To obtain the IP66/IP67/IP69 degree of protection, a kit with insert fixing screw and gasket can be purchased separately. Several inserts size "21.21" are already supplied with fixing screw and gasket, which ensures IP66/IP67/IP69 degree of protection. See list below, not including any special version:

- CQF/M 07, CQF/M 12
- CJ KF
- CJK 8FT
- CX 1/2 BDF/M
- CLK 04 SCF /SCF-H /SCM
- CXL 2/4 PF /PM /PFH /PMH /SF /SM, CXL SF/M
- CXL PF /PM

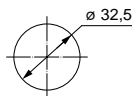
NOTE: Housing type may vary upon specific part No.



(\*) Locknut supplied on request, see Cable glands catalogue (article AS M32N metallic).



panel cut-out for enclosures



cURus  
Type 4/4X/12 pending



IP44 IP66/IP67/IP69 with CKR 65 (D) 1)

# MKAX - MKAXX W-TYPE for aggressive environments

inserts		page:
CK	3 and 4 poles + ⊕	58
CKS	3 and 4 poles + ⊕	-
CKSH	3 and 4 poles + ⊕	63
CD	8 poles	67
CQ4	2 poles + ⊕	182
CQ4 H	2 poles + ⊕	183
CQ4	3 poles + ⊕	184
CQ	5 poles + ⊕	186
CQ	7 poles + ⊕	187
CQ	12 poles + ⊕	189
CQ	21 poles	190

if the counterpart has glued gasket:

CJ KM		223
CJK 8MT		226
CJK 8IMT	226, 228	
CLK 04 SC		239
CX 1/2 BD		243
CXL 2/4 SF/SM		250
CXL SF/SM		250
CXL 2/4 PF/PM		251
CXL 2/4 PFH/PMH		251
CXL PF/PM		251

## hoods stainless steel lever



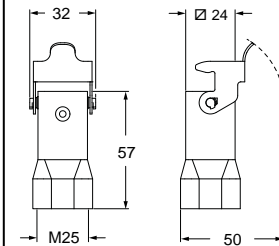
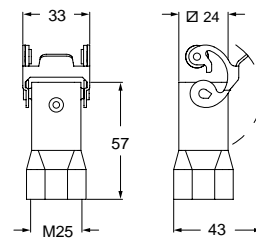
## hoods galvanized steel rigid lever



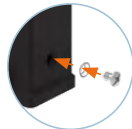
description	part No. (entry M25)	part No. (entry M25)
top entry	<b>MKAXW VG25</b>	<b>MKAXXW VG25</b>
gasket and screw kit for IP66/IP67/IP69 1)	<b>CKR 65</b>	<b>CKR 65</b>
gasket and screw kit for IP66/IP67/IP69 1) specific for CD 08 inserts	<b>CKR 65 D</b>	<b>CKR 65 D</b>

1) To obtain the IP66/IP67/IP69 degree of protection, a kit with insert fixing screw and gasket can be purchased separately.  
Several inserts size "21.21" are already supplied with fixing screw and gasket, which ensures IP66/IP67/IP69 degree of protection. See list below, not including any special version:

- CQF/M 07, CQF/M 12
- CJ KM
- CJK 8MT /8IMT
- CX 1/2 BDF/M
- CLK 04 SCF /SCF-H /SCM
- CXL 2/4 PF /PM /PFH /PMH /SF /SM, CXL SF/M
- CXL PF /PM



NOTE: Housing type may vary upon specific part No.



cURus  
Type 12 / Type 4/4X only with CKR 65 (D)  
pending



IP44 IP66/IP67/IP69 with CKR 65 (D) 1)



# CZ7 - MZ7 CZ - MZ and CZA - MZA W-TYPE for aggressive environments

inserts		page:
CD	15 poles + ⊕	68
CDA	10 poles + ⊕	98
CSAH	10 poles + ⊕	99
CDC	10 poles + ⊕	104
MIXO	1 module	264 - 316

The covers for L, SL and LG versions cannot be used together with coding pins. If this application is required, please contact ILME SpA.

## housings and cover

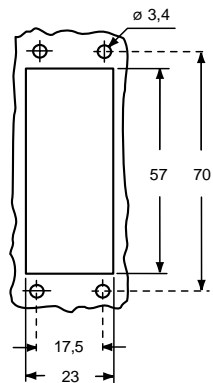


## hoods and cover

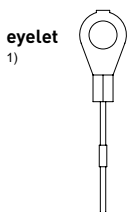


description	part No.	entry Pg	part No.	entry M	part No.	entry Pg	part No.	entry M
bulkhead mounting housing with lever and gasket	<b>CZ7IW 15 L</b>	--						
surface mounting housing, with lever	<b>CZ7PW 15 L2</b>	16 x 2	<b>MZ7PW 15L225</b>	25 x 2				
cover with pegs and gasket (for 1 lever enclosures) <sup>1)</sup>	<b>CZCW 15 L</b>							
cover with pegs and gasket (for 1 lever enclosures) <sup>2)</sup>	<b>CZCW 15 SL</b>							
enclosure with pegs and gasket, side entry					<b>CZOW 15 L</b>	16	<b>MZOW 15 L20</b>	20
enclosure with pegs and gasket, side entry							<b>MZOW 15 L25</b>	25
enclosure with pegs and gasket, side entry, high construction					<b>CZAOW 15 L21</b>	21	<b>MZAOW 15 L25</b>	25
enclosure with pegs and gasket, top entry					<b>CZVW 15 L</b>	13,5	<b>MZVW 15 L20</b>	20
enclosure with pegs and gasket, top entry, high construction					<b>CZAVW 15 L21</b>	21	<b>MZAVW 15 L25</b>	25
cover with lever (for enclosures with pegs) <sup>2)</sup>					<b>CZ7CW 15 LG</b>			

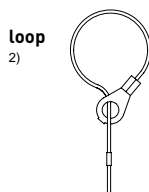
panel cut-out for bulkhead mounting housings



For fixing on housings



For fixing on hoods

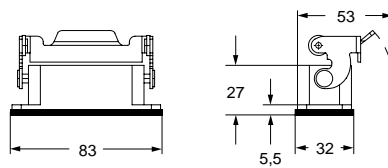


**CALUS**® Type 4/4X/12

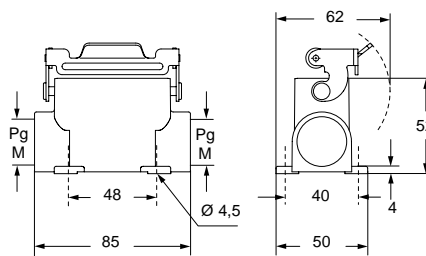
insulating cable gland or fittings without gasket

cable gland with O-Ring gasket

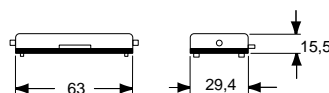
### CZ7IW L



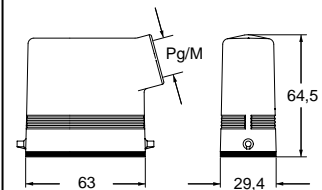
### CZ7PW L and MZ7PW L



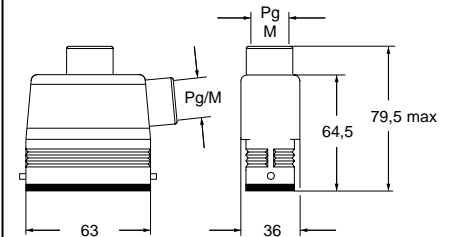
### CZCW L (SL)



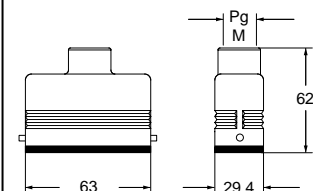
### CZOW L and MZOW L



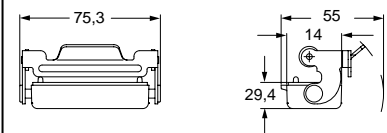
### CZAOW L - MZAOW L and CZAVW L - MZAVW L



### CZVW L and MZVW L



### CZ7CW LG



# CZ7 - MZ7 CZ - MZ and CZA - MZA W-TYPE for aggressive environments

inserts		page:
CD	25 poles + ⊕	69
CDD	38 poles + ⊕	77
CDA	16 poles + ⊕	100
CSAH	16 poles + ⊕	101
CDC	16 poles + ⊕	105

The covers for L, SL and LG versions cannot be used together with coding pins. If this application is required, please contact ILME SpA.

## housings and cover

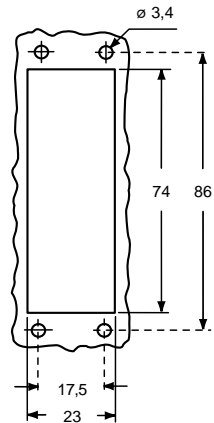


## hoods and cover

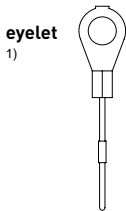


description	part No.	entry Pg	part No	entry M	part No.	entry Pg	part No.	entry M
bulkhead mounting housing with lever and gasket	<b>CZ7IW 25 L</b>	--						
surface mounting housing, with lever	<b>CZ7PW 25 L2</b>	16 x 2	<b>MZ7PW 25L225</b>	25 x 2				
cover with pegs (for 1 lever enclosures) <sup>1)</sup>	<b>CZCW 25 L</b>							
cover with pegs (for 1 lever enclosures) <sup>2)</sup>	<b>CZCW 25 SL</b>							
enclosure with pegs and gasket, side entry					<b>CZOW 25 L</b>	16	<b>MZOW 25 L20</b>	20
enclosure with pegs and gasket, side entry							<b>MZOW 25 L25</b>	25
enclosure with pegs and gasket, side entry, high construction					<b>CZAOW 25 L21</b>	21	<b>MZAOW 25 L25</b>	25
enclosure with pegs and gasket, top entry					<b>CZVW 25 L</b>	16	<b>MZVW 25 L20</b>	20
enclosure with pegs and gasket, top entry, high construction					<b>CZAVW 25 L21</b>	21	<b>MZAVW 25 L25</b>	25
cover with lever (for enclosures with pegs) <sup>2)</sup>					<b>CZ7CW 25 LG</b>			

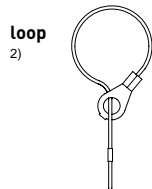
panel cut-out for bulkhead mounting housings



For fixing on housings



For fixing on hoods

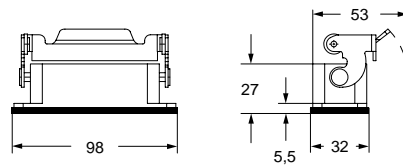


**CAIUS** Type 4/4X/12

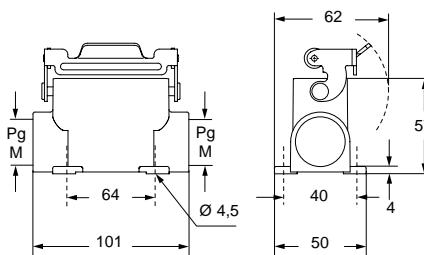
insulating cable gland or fittings without gasket

cable gland with O-Ring gasket

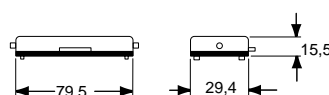
### CZ7IW L



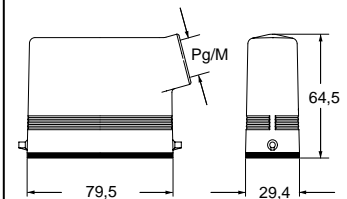
### CZ7PW L and MZ7PW L



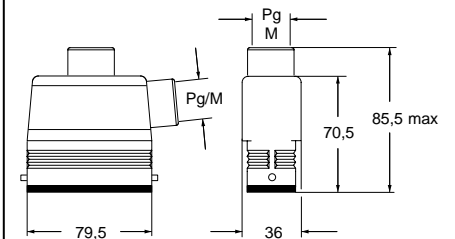
### CZCW L (SL)



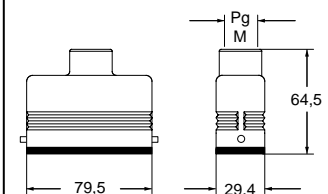
### CZOW L and MZOW L



### CZAOW L - MZAOW L and CZAVW L - MZAVW L

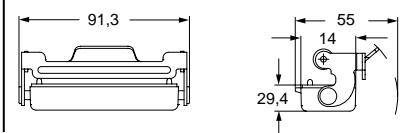


### CZVW L and MZVW L \*



\* can only be used with a complete cable gland (to be purchased separately)

### CZ7CW LG



# CH - CA and MA W-TYPE for aggressive environments

inserts		page:
CDD	24 poles + ⊕	76
CDS	9 poles + ⊕	-
CDSH	9 poles + ⊕	86
CDSH NC	6 poles + ⊕	95
CNE	6 poles + ⊕	110
CSE	6 poles + ⊕	-
CSH	6 poles + ⊕	110
CSH S	6 poles + ⊕	122
CCE	6 poles + ⊕	130
CSS	6 poles + ⊕	148
CT, CTSE (16A *)	6 poles + ⊕	160
CQE	10 poles + ⊕	168
MIXO	2 modules	262 - 317

\*) only for enclosure CHIW 06 L

## housings and cover

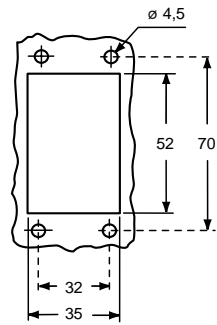


## hoods and cover

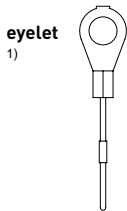


description	part No.	entry Pg	part No.	entry M	part No.	entry Pg	part No.	entry M
bulkhead mounting housing with lever and gasket	<b>CHIW 06 L</b>	--						
surface mounting housing, with lever, high construction	<b>CAPW 06 L</b>	21	<b>MAPW 06 L32</b>	32				
cover with pegs (for 1 lever enclosures) <sup>1)</sup>	<b>CHCW 06 L</b>							
cover with pegs (for 1 lever enclosures) <sup>2)</sup>	<b>CHCW 06 SL</b>							
enclosure with pegs, side entry, high construction			<b>CAOW 06 L21</b>	21	<b>MAOW 06 L32</b>	32		
enclosure with pegs, top entry, high construction			<b>CAVW 06 L21</b>	21	<b>MAVW 06 L32</b>	32		
cover with lever (for enclosures with pegs) <sup>2)</sup>			<b>CHCW 06 LG</b>					
enclosure with lever and gasket, side entry, high construction			<b>CAVW 06 LG</b>	21	<b>MAVW 06 LG32</b>	32		

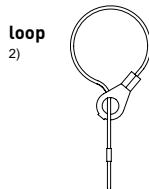
panel cut-out for bulkhead mounting housings



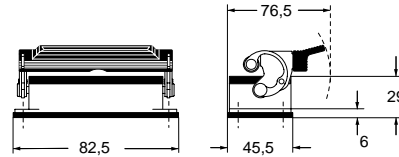
For fixing on housings



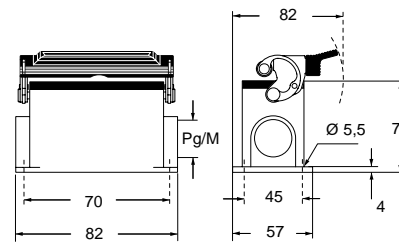
For fixing on hoods



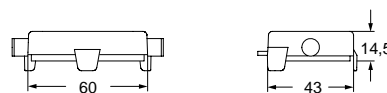
### CHIW L



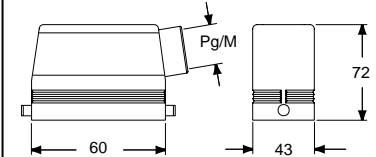
### CAPW L and MAPW L



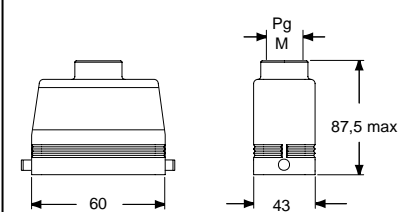
### CHCW L (SL)



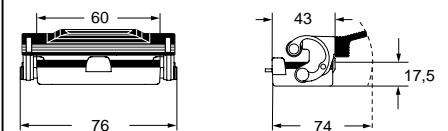
### CAOW L and MAOW L



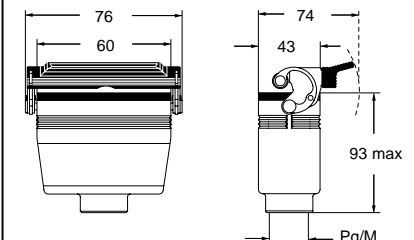
### CAVW L and MAVW L



### CHCW LG



### CAVW LG and MAVW LG



**CAIUS** Type 4/4X/12

insulating cable gland or fittings without gasket

cable gland with O-Ring gasket

# CH - CA and MA W-TYPE for aggressive environments

inserts		page:
CDD	42 poles + ⊕	78
CDS	18 poles + ⊕	-
CDSH	18 poles + ⊕	87
CNE	10 poles + ⊕	111
CSE	10 poles + ⊕	-
CSH	10 poles + ⊕	111
CSH S	10 poles + ⊕	123
CCE	10 poles + ⊕	131
CMSH	3+2 (aux) poles + ⊕	136
CMCE	3+2 (aux) poles + ⊕	137
CSS	10 poles + ⊕	149
CT, CTSE (16A) *)	10 poles + ⊕	161
CQE	18 poles + ⊕	169
CX	8/24 poles + ⊕	194
MIXO	3 modules	262 - 317

\*) only for enclosure CHIW 10

## housings and cover

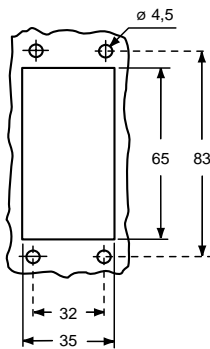


## hoods and cover

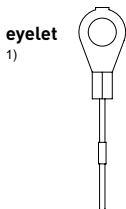


description	part No.	entry Pg	part No	entry M	part No.	entry Pg	part No.	entry M
bulkhead mounting housing with levers and gasket	<b>CHIW 10</b>	--						
surface mounting housing, with levers, high construction	<b>CAPW 10.21</b>	21	<b>MAPW 10.32</b>	32				
cover with 4 pegs (for enclosures with 2 levers) <sup>1)</sup>	<b>CHCW 10</b>							
cover with 4 pegs (for enclosures with 2 levers) <sup>2)</sup>	<b>CHCW 10 S</b>							
enclosure with pegs, side entry, high construction					<b>CAOW 10.21</b>	21	<b>MAOW 10.32</b>	32
enclosure with pegs, top entry, high construction					<b>CAVW 10.21</b>	21	<b>MAVW 10.32</b>	32
cover with 2 levers (for enclosures with 4 pegs) <sup>2)</sup>					<b>CHCW 10 G</b>			
enclosure with levers and gasket, top entry, high construction					<b>CAVW 10 G</b>	21	<b>MAVW 10 G32</b>	32

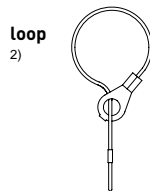
panel cut-out for bulkhead mounting housings



For fixing on housings



For fixing on hoods



**CAU**® Type 4/4X/12

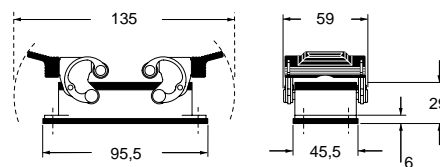


insulating cable gland or fittings without gasket

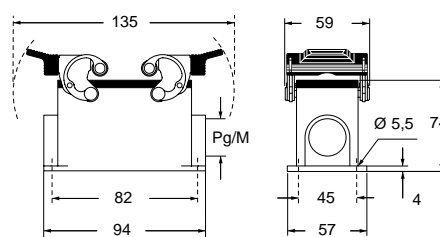


cable gland with O-Ring gasket

### CHIW



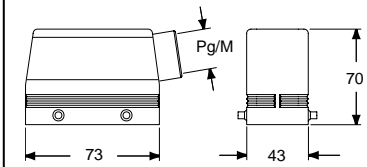
### CAPW and MAPW



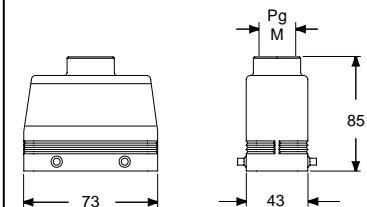
### CHCW (S)



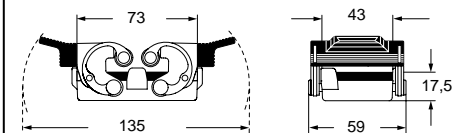
### CAOW and MAOW



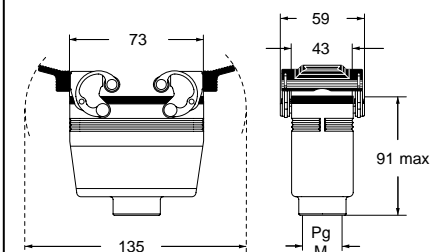
### CAVW and MAVW



### CHCW G



### CAVW G and MAVW G



# CH - CA and MH - MA W-TYPE for aggressive environments

inserts		page:
CD	40 poles + ⊕	70
CDD	72 poles + ⊕	79
CDS	27 poles + ⊕	-
CDSH	27 poles + ⊕	88
CNE	16 poles + ⊕	112
CSE	16 poles + ⊕	-
CSH	16 poles + ⊕	112
CSH S	16 poles + ⊕	124
CCE	16 poles + ⊕	132
CMSH, CMCE	6+2 (aux) poles + ⊕	138 - 139
CSS	16 poles + ⊕	150
CT, CTS (10A) *)	40 poles + ⊕	156
CT, CTSE (16A) *)	16 poles + ⊕	162
CQE	32 poles + ⊕	170
CQEE	40 poles + ⊕	176
CP	6 poles + ⊕	178
CX	6/12, 6/36 and 12/2 poles + ⊕	197 - 199
CX	4/0 and 4/2 poles + ⊕	200 - 201
MIXO	4 modules	262 - 317

\*) only for enclosure CHIW 16

## housings and cover

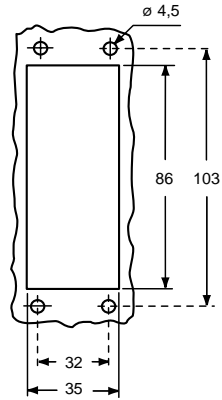


## hoods and cover

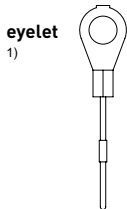


description	part No.	entry Pg	part No.	entry M	part No.	entry Pg	part No.	entry M
bulkhead mounting housing with levers and gasket	<b>CHIW 16</b>	--						
surface mounting housing, with levers, high construction	<b>CAPW 16.21</b>	21	<b>MAPW 16.32</b>	32				
cover with 4 pegs (for enclosures with 2 levers) <sup>1)</sup>	<b>CHCW 16</b>							
cover with 4 pegs (for enclosures with 2 levers) <sup>2)</sup>	<b>CHCW 16 S</b>							
enclosure with pegs, side entry					<b>CHOW 16</b>	21	<b>MHOW 16.25</b>	25
enclosure with pegs, side entry							<b>MHOW 16.32</b>	32
enclosure with pegs, side entry, high construction					<b>CAOW 16.29</b>	29	<b>MAOW 16.32</b>	32
enclosure with pegs, side entry, high construction							<b>MAOW 16.40</b>	40
enclosure with pegs, top entry					<b>CHVW 16</b>	21	<b>MHVW 16.25</b>	25
enclosure with pegs, top entry							<b>MHVW 16.32</b>	32
enclosure with pegs, top entry, high construction					<b>CAVW 16.29</b>	29	<b>MAVW 16.32</b>	32
enclosure with pegs, top entry, high construction							<b>MAVW 16.40</b>	40
cover with 2 levers (for enclosures with 4 pegs) <sup>2)</sup>	<b>CHCW 16 G</b>							
enclosure with levers and gasket, top entry, high construction	<b>CAVW 16 G29</b>	29	<b>MAVW 16 G32</b>	32				

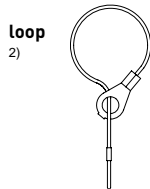
### panel cut-out for bulkhead mounting housings



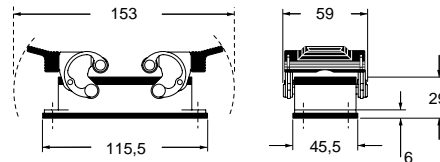
### For fixing on housings



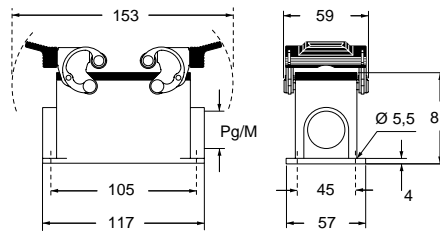
### For fixing on hoods



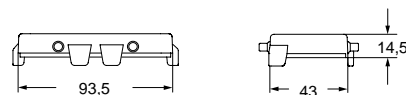
### CHIW



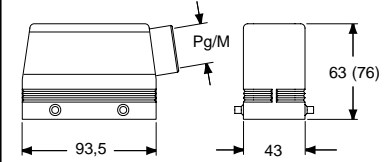
### CAPW and MAPW



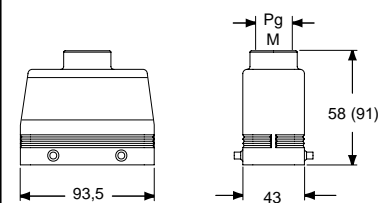
### CHCW (S)



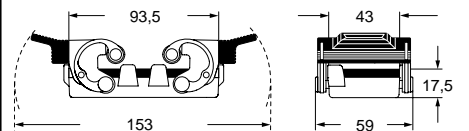
### CHOW (CAOW) and MHOW (MAOW)



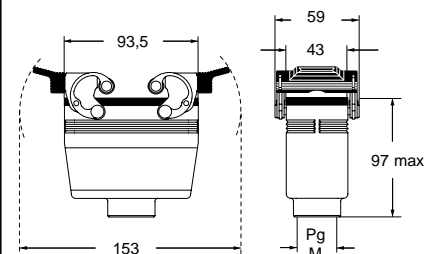
### CHVW (CAVW) and MHVW (MAVW)



### CHCW G



### CAVW G and MAVW G



**CRUIS** Type 4/4X/12

insulating cable gland or fittings without gasket

cable gland with O-Ring gasket

# CH - CA and MH - MA W-TYPE for aggressive environments

inserts		page:
CD	64 poles + ⊕	72
CDD	108 poles + ⊕	81
CDS	42 poles + ⊕	-
CDSH	42 poles + ⊕	89
CNE	24 poles + ⊕	113
CSE	24 poles + ⊕	-
CSH	24 poles + ⊕	113
CSH S	24 poles + ⊕	125
CCE	24 poles + ⊕	133
CMSH	10+2 (aux) poles + ⊕	140
CMCE	10+2 (aux) poles + ⊕	141
CSS	24 poles + ⊕	151
CT, CTS (10A *)	64 poles + ⊕	157
CT, CTSE (16A *)	24 poles + ⊕	163
CQE	46 poles + ⊕	171
CQEE	64 poles + ⊕	177
CX	4/8 and 6/6 poles + ⊕	204, 206
MIXO	6 modules	262 - 317

\*) only for enclosure CHIW 24

## housings and cover

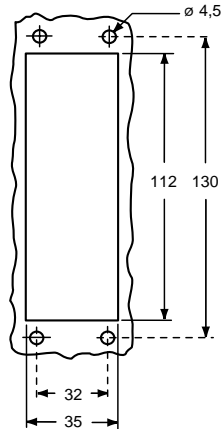


## hoods and cover

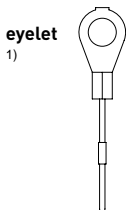


description	part No.	entry Pg	part No	entry M	part No.	entry Pg	part No.	entry M
bulkhead mounting housing with levers and gasket	<b>CHIW 24</b>	--						
surface mounting housing, with levers, high construction	<b>CAPW 24.21</b>	21	<b>MAPW 24.32</b>	32				
cover with 4 pegs (for enclosures with 2 levers) <sup>1)</sup>	<b>CHCW 24</b>							
cover with 4 pegs (for enclosures with 2 levers) <sup>2)</sup>	<b>CHCW 24 S</b>							
enclosure with pegs, side entry					<b>CHOW 24</b>	21	<b>MHOW 24.25</b>	25
enclosure with pegs, side entry							<b>MHOW 24.32</b>	32
enclosure with pegs, side entry, high construction					<b>CAOW 24.29</b>	29	<b>MAOW 24.32</b>	32
enclosure with pegs, side entry, high construction							<b>MAOW 24.40</b>	40
enclosure with pegs, top entry					<b>CHVW 24</b>	21	<b>MHVW 24.25</b>	25
enclosure with pegs, top entry							<b>MHVW 24.32</b>	32
enclosure with pegs, top entry, high construction					<b>CAVW 24.29</b>	29	<b>MAVW 24.32</b>	32
enclosure with pegs, top entry, high construction							<b>MAVW 24.40</b>	40
cover with 2 levers (for enclosures with 4 pegs) <sup>2)</sup>	<b>CHCW 24 G</b>							
enclosure with levers and gasket, top entry	<b>CHVW 24 G</b>	21	<b>MHVW 24 G32</b>	32				

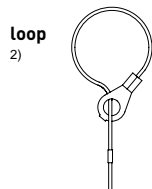
panel cut-out for bulkhead mounting housings



For fixing on housings



For fixing on hoods

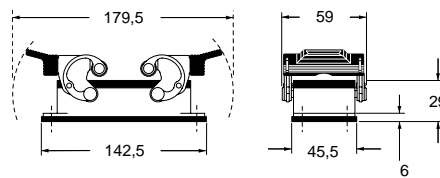


**CAIUS** Type 4/4X/12

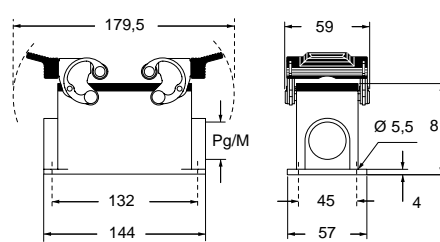
insulating cable gland or fittings without gasket

cable gland with O-Ring gasket

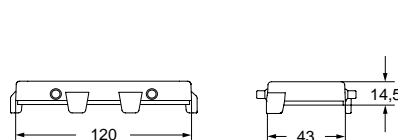
### CHIW



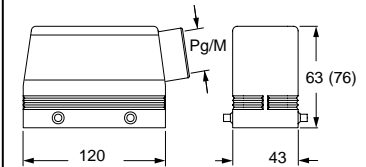
### CAPW and MAPW



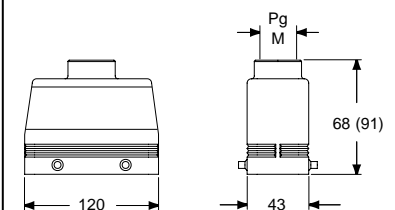
### CHCW (S)



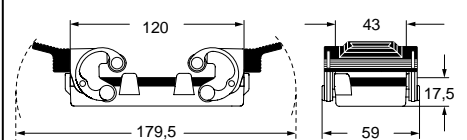
### CHOW (CAOW) and MHOW (MAOW)



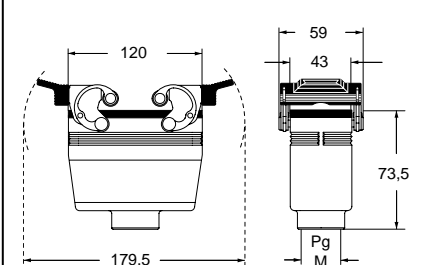
### CHVW (CAVW) and MHVW (MAVW)



### CHCW G



### CHVW G and MHVW G



W-TYPE

# CH and MH W-TYPE for aggressive environments

inserts		page:
CD	80 poles + ⊕	73
CDD	144 poles + ⊕	82
CDS	54 poles + ⊕	-
CDSH	54 poles + ⊕	90
CNE	32 poles + ⊕	114
CSE	32 poles + ⊕	-
CSH	32 poles + ⊕	114
CSH S	32 poles + ⊕	126
CCE	32 poles + ⊕	134
CSS	32 poles + ⊕	152
CTSE (16A) *	32 poles + ⊕	164
CQE	64 poles + ⊕	172
CME	12+4 (aux) poles + ⊕	142
CMSH	12+4 (aux) poles + ⊕	142
CMCE	12+4 (aux) poles + ⊕	143
CP	12 poles + ⊕	179
MIXO	4 + 4 modules	262 - 317

\*) only for enclosure CHIW 32

insert dimensions:  
2 x (77,5 x 27) mm

## housings and cover

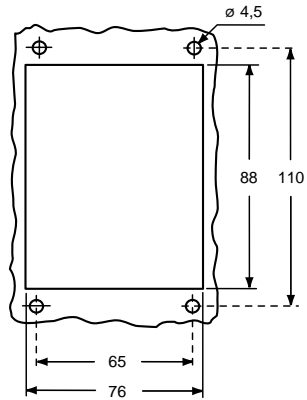


## hoods and cover

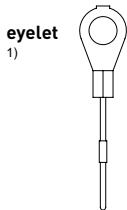


description	part No.	entry Pg	part No	entry M	part No.	entry Pg	part No.	entry M
bulkhead mounting housing with levers and gasket	<b>CHIW 32</b>	--						
surface mounting housing, with levers	<b>CHPW 32</b>	36	<b>MHPW 32.50</b>	50				
cover with 4 pegs (for enclosures with 2 levers) <sup>1)</sup>	<b>CHCW 32</b>							
cover with 4 pegs (for enclosures with 2 levers) <sup>2)</sup>	<b>CHCW 32 S</b>							
enclosure with pegs, side entry					<b>CHOW 32</b>	36	<b>MHOW 32.40</b>	40
enclosure with pegs, top entry					<b>CHVW 32</b>	36	<b>MHVW 32.40</b>	40
cover with 2 levers (for enclosures with 4 pegs) <sup>2)</sup>					<b>CHCW 32 G</b>			
enclosure with levers and gasket, top entry					<b>CHVW 32 G</b>	36	<b>MHVW 32 G40</b>	40

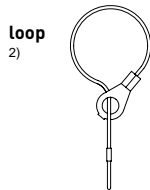
### panel cut-out for bulkhead mounting housings



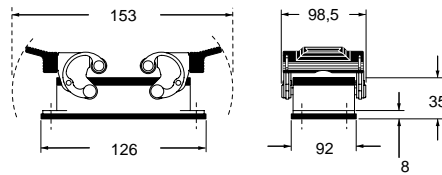
### For fixing on housings



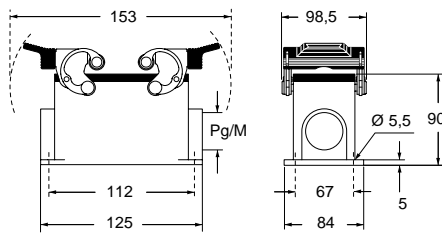
### For fixing on hoods



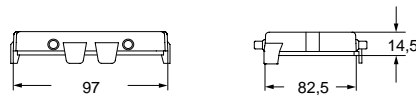
### CHIW



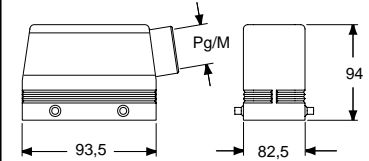
### CHPW and MHPW



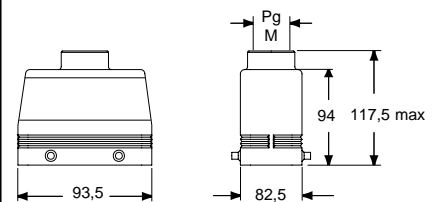
### CHCW (S)



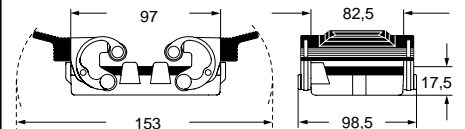
### CHOW and MHOW



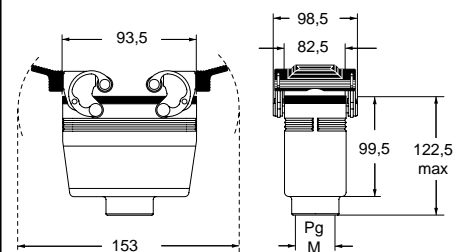
### CHVW and MHVW



### CHCW G



### CHVW G and MHVW G



**CAIUS** Type 4/4X/12

insulating cable gland or fittings without gasket

cable gland with O-Ring gasket

# CH and MH W-TYPE for aggressive environments

inserts		page:
CD	128 poles + ⊕	74
CDD	216 poles + ⊕	83
CDS	84 poles + ⊕	-
CDSH	84 poles + ⊕	91
CNE	48 poles + ⊕	115
CSE	48 poles + ⊕	-
CSH	48 poles + ⊕	115
CSH S	48 poles + ⊕	127
CCE	48 poles + ⊕	135
CME	20+4 (aux) poles + ⊕	144
CMSh	20+4 (aux) poles + ⊕	144
CSS	48 poles + ⊕	153
CTSE (16A) *)	48 poles + ⊕	165
CQE	92 poles + ⊕	173
MIXO	6 + 6 modules	262 - 317

\*) only for enclosure CHIW 48 LS

insert dimensions:  
2 x (104 x 27) mm

## bulkhead and surface mounting housings

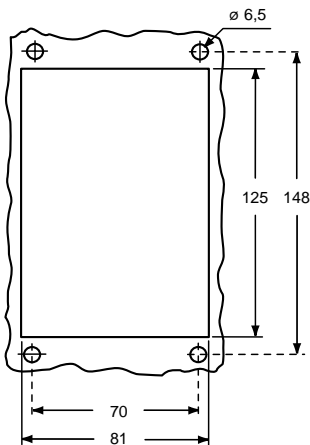


## hoods

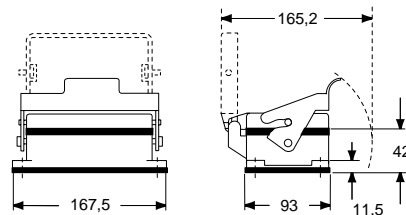


description	part No.	entry Pg	part No.	entry M	part No.	entry Pg	part No.	entry M
bulkhead mounting housings, with lever, gasket and cover	<b>CHIW 48 LS</b>	--						
surface mounting housings, with lever and cover	<b>CHPW 48 LS</b>	36 x 1/2	<b>MHPW 48 LS40</b>	40 x 1/2				
side entry, with pegs					<b>CHOW 48 L</b>	36	<b>MHOW 48 L40</b>	40
top entry, with pegs					<b>CHVW 48 L</b>	36	<b>MHVW 48 L40</b>	40

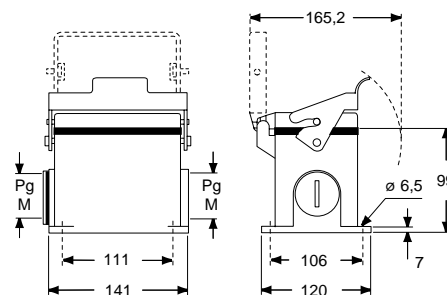
### panel cut-out for bulkhead mounting housings



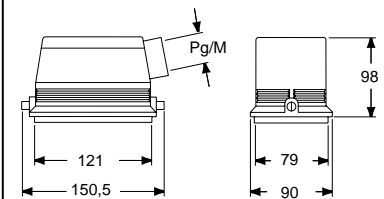
### CHIW LS



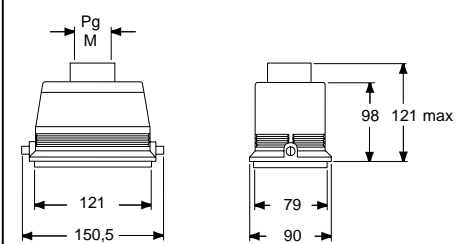
### CHPW LS and MHPW LS




### CHOW L and MHOW L




### CHVW L and MHVW L



**CAVUS**® Type 4/4X/12

 insulating cable gland or fittings without gasket

 cable gland with O-Ring gasket

W-TYPE



# CH - CA and MH - MA W-TYPE for aggressive environments

inserts		page:
CD	50 poles + ⊕	71
CDD	76 poles + ⊕	80
CDA	32 poles + ⊕	102
CSAH	32 poles + ⊕	103
CDC	32 poles + ⊕	106

insert dimensions:  
2 x (66 x 16) mm

CHCW 50 and CHCW 50 G covers cannot be used together with coding pins. If this application is required, please contact ILME SpA.

## housings and cover

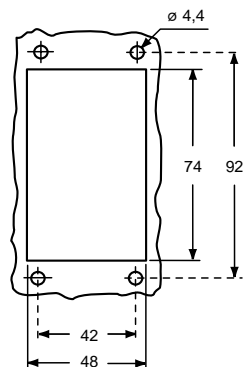


## hoods and cover

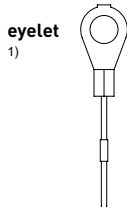


description	part No.	entry Pg	part No.	entry M	part No.	entry Pg	part No.	entry M
bulkhead mounting housings with levers and gasket	<b>CHIW 50</b>	--						
surface mounting housing, with levers	<b>CHPW 50.21</b>	21	<b>MHPW 50.32</b>	32				
surface mounting housing, with levers	<b>CHPW 50.229</b>	29 x 2	<b>MHPW 50.240</b>	40 x 2				
cover with 4 pegs (for housings with 2 levers) <sup>1)</sup>	<b>CHCW 50</b>							
cover with 4 pegs (for housings with 2 levers) <sup>2)</sup>	<b>CHCW 50 S</b>							
enclosure with 4 pegs, side entry					<b>CHOW 50</b>	21	<b>MHOW 50.25</b>	25
enclosure with 4 pegs, side entry							<b>MHOW 50.32</b>	32
enclosure with 4 pegs, side entry, high construction					<b>CAOW 50.29</b>	29	<b>MAOW 50.32</b>	32
enclosure with 4 pegs, top entry, high construction					<b>CAVW 50.29</b>	29	<b>MAVW 50.32</b>	32
cover with 2 levers (for enclosures with 4 pegs) <sup>2)</sup>					<b>CHCW 50 G</b>			

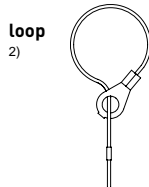
panel cut-out for bulkhead mounting housings



For fixing on housings



For fixing on hoods

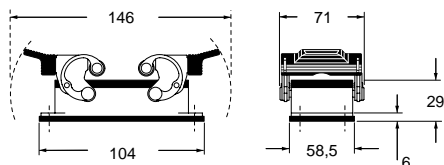


**CRUIS** Type 4/4X/12

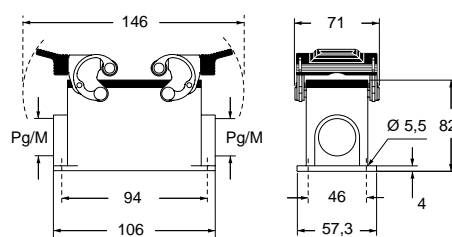
insulating cable gland or fittings without gasket

cable gland with O-Ring gasket

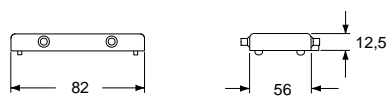
### CHIW



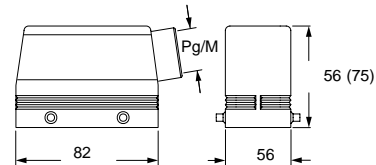
### CHPW and MHPW



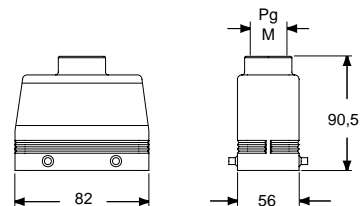
### CHCW (S)



### CHOW (CAOW) and MHOW (MAOW)



### CAVW and MAVW



### CHCW G

