

## T-TYPE HYGIENIC

### Resistance of materials to detergents/disinfectants used in the food industry



**ILME T-TYPE/H and T-TYPE/C** enclosure materials have been selected to guarantee compatibility with the principal alkaline or acid detergents and disinfectants used in the food industry. In particular, series T-TYPE/H

and T-TYPE/C enclosures have been tested according to protocol **F&E/ P3-E n. 40-1** by Ecolab, leading multinational in the detergent sector, to verify their compatibility with the following cleaning fluids:

- **Acid foaming detergents:** P3-topax 52, Topaz AC5, P3-topmaxx 520 and P3-topax 56.
- **Alkaline foaming detergents:** P3-topax 19, Topaz MD3 and Ecofoam Basic.
- **Strong alkaline foaming detergents:** P3-topax 36, Topaz HD1 and P3-topax 30.
- **Alkaline-chloride foaming detergents-disinfectants:** P3-topax 66, Ecofoam CL and P3-topax M95.
- **Non-foaming peracetic based disinfectants:** P3-oxonia active, P3-topactive OKT0 and P3-topactive DES.
- **Neutral disinfectants:** P3-topax 990 and P3-topax 91.
- Full immersion of parts in detergent/disinfectant solutions.
- Water hardness of 200ppm CaCO<sub>3</sub>
- Tests performed at concentrations 30% higher than those normally recommended in technical data sheets.
- Test duration (each detergent): 28 days at 20 °C (equivalent to 6 years of daily cleaning).
- Test solution renewed every 3-4 days for oxidizing products (P3-oxonia active, P3-topactive OKT0, P3-topax 66).
- Test results evaluation: ISO 4068-1 (esthetic appearance and mass loss).

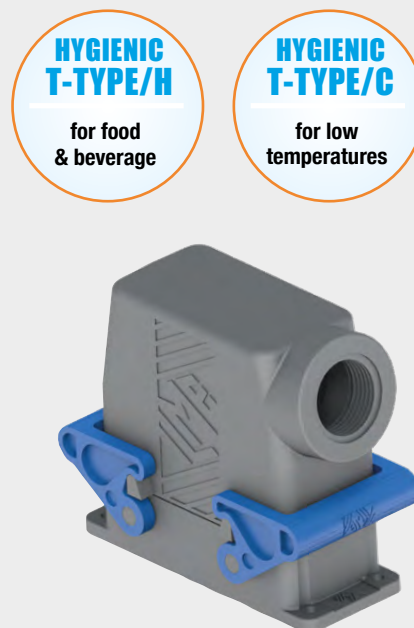
#### Cleanability and degrees of protection used in the food industry

##### ECOLAB F&E/P3-E n. 40-1 Test Protocol see declaration of compatibility at pages 494-495

Series T-TYPE/H and T-TYPE/C enclosures have been designed to facilitate cleaning of surfaces that could potentially come into contact with food. For this purpose **Series T-TYPE/H and T-TYPE/C** enclosures have **IP66 and IP69 degrees of protection as per IEC 60529 Edition 2.2 (2013-08)** to allow jet washing, as typically used in the food industry.

The suitability of ILME products for the **cleanability** requirements stated by Machinery Directive 2006/42/EC for both Splash and Food Area zones (EN 1672-2 and EN ISO 14159) **depends on the specific installation of ILME products on the machine and must be evaluated by the machine manufacturer.**

In addition to the Hygienic version, aluminium enclosures are also available with degrees of protection up to IP68 (check for possible applicability).



Declaration of compatibility - By courtesy of ECOLAB s.r.l.



**ECOLAB®**

## DECLARATION OF COMPATIBILITY

between **ECOLAB** hygiene products  
and **ILME** enclosures for multipole connectors

**For the completely safe cleaning of your plant**



The ideal partner for Industrial Connections for power supply of plug connected devices, connections for auxiliary circuits and automation control:

T-type H and T-type C enclosures



The declaration proves the high resistance of these enclosures to Ecolab products commonly and worldwide used in Food and Beverage Industries.

ILME S.p.a.  
Via Marco Antonio Colonna, 9 - 20149 Milano (MI)  
[www.ilme.com](http://www.ilme.com)

**ECOLAB®**

Supplier of hygiene solutions for  
Food and Beverage industries

### Products



### Equipments



### Services



Ecolab s.r.l.  
Via Paracelso 6 - 20864 Agrate Brianza (MB)  
[www.it.ecolab.eu](http://www.it.ecolab.eu)



### Compatible products with T-type/C and T-type/H ILME enclosures

See below for the test procedure

PRODUCT	%	T-TYPE ENCLOSURE	DEFECT QUANTITY	DEFECT QUALITY	COLOR VARIATION
P3-topax 52 - Topaz AC5	6	C and H	0	0	0
P3-topax 19 - Topaz MD3	6	C and H	0	0	0
P3-topax 36 - Topaz HD1	6	C and H	0	0	0
P3-topax 91	6	C and H	0	0	0
P3-topax 990	6	C and H	0	0	0
P3-oxonia active	1	C and H	0	0	0
P3-topactive okto	3	C and H	0	0	0
P3-topax 66	6	C and H	0	0	0

DEFECT QUANTITY: 0 means - No detectable defect  
 DEFECT QUALITY: 0 means - Up to 10x magnification no detectable defect  
 COLOR VARIATION: 0 means - Unchanged, no discoloration

### Test procedure

- Test performed by Ecolab Technical Application Service
- Ecolab reference method 40.1 – ISO 4068-1 for the evaluation
- Full immersion of parts in detergent/disinfectant solutions
- Water hardness of 200ppm CaCO<sub>3</sub>
- 28 days total time at 20°C (equivalent to the contact time that occurs in 6 years of daily cleaning)
- Concentrations tested 30% higher than those normally recommended
- Test solution renewed every 3-4 days for oxidizing products (P3-oxonia active, P3-topactive OKTO, P3-topax 66)

### Final statement

- The Ecolab Technical Application Service Italy certifies that the ILME enclosures for multipole connectors T-type/C and T-type/H are perfectly compatible with the above listed Ecolab detergents and disinfectants used in a concentration 30% higher than those normally recommended.

February 2016

## HYGIENIC

### Requirements on materials in contact or that may come into contact with food products

T-TYPE/H and T-TYPE/C materials have been selected to satisfy the requirements of EHEDG Guideline n° 32 “Materials of construction for food equipment in contact with food” and point 2.1.1, letter a) in Annex I of the Machinery Directive 2006/42/EC. Paragraph 91 of the Guide to the application of Machinery Directive 2006/42/EC specifies that the reference at Annex I, point 2.1.1, letter a) of the directive must be considered as a reference to EC regulation n. 1935/2004 and directive 2002/72/EC.

EU commission regulation n. 10/2011 dated 14 January 2011, concerning plastic material and objects designed for contact with food products, is a specific measure as provided for by article 5, paragraph 1 of the above-mentioned EC regulation n. 1935/2004.

It defines specific regulations for plastic materials and objects in order to guarantee their use in safe conditions and supersedes commission directive 2002/72/EC dated 6 August 2002 on plastic materials and objects designed for contact with food products. Art. 2, section 2 of the above-mentioned EU regulation n. 10/2011 specifies that rubber and silicone do not fall within the field of application of the regulation. EU regulation n. 10/2011 provides for the use of materials in positive lists of technological monomers, additives and adjuvants and the passing of global and specific migration tests in food simulants.

ILME T-TYPE/H and T-TYPE/C series enclosure materials have been selected according to EU n. 10/2011 regulation requirements and each component has been tested according to EU regulation n. 10/2011 and EC regulation n. 1935/2004.

Furthermore, T-TYPE/H and T-TYPE/C series gasket materials have been formulated according to FDA Guideline 21 CFR §177.2600 and T-TYPE enclosures and levers materials complying with FDA, 21 CFR, §177.1520 (a)(3)(i)(c)(1), (b) and (c)3.1a.





# HYGIENIC

## Risk Assessment and Critical Control Points in the food industry

Companies that work in the food sector must implement HACCP, i.e. Hazard Analysis and Critical Control Points system (EC Regulation 853/2004 on food product hygiene in force since 01/01/2006) and can voluntarily apply for various certificates (ISO 22000, BRC, ISF, etc.).

All those involved in primary food production (harvesting, milking, breeding), its preparation, transformation, manufacturing, packaging, storage, transport, distribution, handling, sales or supply, including consumer catering, are required to implement an HACCP system, i.e. a series of procedures aimed at preventing food contamination hazards. HACCP is based on monitoring food processing points where biological, chemical or physical contamination hazards may arise. In 2006, HACCP was made mandatory for companies that deal with the food for animals (production of raw materials, mixtures and additives).

A company required to implement HACCP can initially divide its food processing machinery into three zones from the point of view of risk for food product hygiene. The choice of the zone in which the wiring and connectors are installed depends on the risk assessment the manufacturer must conduct as per Machinery Directive 2006/42/EC which, in chapter 2.1, sets out the additional requirements for the food industry (see Table 1).

**Table 1. According to EN 1672-2:2009 - Food processing machinery - Basic concepts - Part 2: Hygiene requirements**

Application Zones	Zone Requirements	Usable Products
No Food Area: Zone where there is <u>no contact risk</u> with food.	<u>No additional requirement</u> for the food industry.	Enclosures series T-TYPE, T-TYPE/W, C-TYPE, BIG, IP68, C7 IP67, W-TYPE, EMC, COB, ...
Splash Area: Zone where <u>components may come into contact with food</u> but <u>there is no risk</u> that the food that came into contact with the components in this area <u>returns to the production cycle</u> .	In this zone, components also come into contact with cleaning agents used in the food industry and <u>must therefore be cleanable and resistant to the washing process</u> (see "Resistance of materials to detergents/disinfectants used in the food industry" and "Cleanability and degrees of protection used in the food industry").	New Hygienic version enclosures series <u>T-TYPE/H and T-TYPE/C</u> .
Food Area: Zone where <u>components may come into contact with food</u> , with the risk that the food that came into contact with the components in this area <u>returns to the production cycle</u> .	In this zone, in addition to complying with the cleanability and washing requirements, the <u>components</u> are also subject to a series of more <u>stringent requirements</u> aimed at making negligible the <u>risk of food contamination</u> in the process (see paragraph "Requirements on materials in contact or that may come into contact with food products").	For more information about T-TYPE/C in special version, please contact our Offices.

## HYGIENIC

### T-TYPE/H & T-TYPE/C

## The evolution of T-TYPE insulating enclosures meets food and beverage requirements



The new Hygienic multi-pole connector enclosures version (series T-TYPE/H and T-TYPE/C) has been designed for installation on food industry machines and systems.

For this purpose, the following improvements to the T-TYPE series have been made in order to satisfy the requirements laid down by chapter 2.1 of Machinery Directive 2006/42/EC for the machines on which they are installed:

- material cleanability and resistance to the cleaning and sanitising agents normally used in the food industry;
- materials in terms of the requirements for accidental contact with food products.

The T-TYPE/H and T-TYPE/C series enclosures fit different sealing gaskets.

For T-Type/H series enclosures, the sealing gasket is in HNBR rubber, a material with excellent resistance to both acidic and alkaline detergents as well as any animal and vegetable fats it could come into contact with in food industry applications.

For T-TYPE/C series enclosures, the sealing gasket is made by silicone rubber, a material with good resistance to acidic and alkaline detergents as well as animal and vegetable fats. It is also characterised by its improved resistance to low temperatures (series suitable for uses as low as -50 °C), conditions that can arise in food industries that use the cold chain.

A dedicated variant of this new Hygienic version may be used where a high risk of accidental contact with food is occurring during production (see Table 1, Application Zones, Food Area). For more information about this possible special version, please contact our Offices.

In accordance with the requirements set forth in EHEDG Guideline n. 32 "Materials of construction for food equipment in contact with food" (EHEDG = European Hygienic Engineering & Design Group), the closing levers and sealing gaskets are coloured blue to easily identify any accidental contaminations in food products and to facilitate the visual identification of their complete cleanliness.

For this purpose, the following improvements to the T-TYPE series have been made in order to satisfy the requirements laid down by chapter 2.1 of **Machinery Directive 2006/42/EC** for the machines on which they are installed:

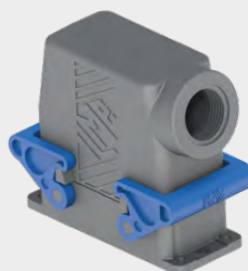
- material cleanability and resistance to the cleaning and sanitising agents normally used in the food industry;

- materials in terms of the requirements for accidental contact with food products.

## T-TYPE/H - PRODUCTION LINES APPLICATIONS

### SUM-UP

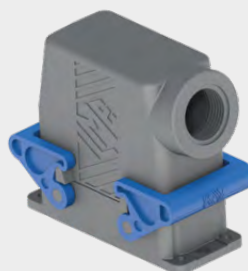
- ❑ Enclosures in thermoplastic material, dark grey RAL 7012 colour, with high thicknesses providing structural solidity and durability
- ❑ Sealing gaskets made by HNBR rubber formulated in accordance with FDA Guideline 21 CFR §177.2600
- ❑ Levers in thermoplastic material, blue RAL 5015 colour
- ❑ M25, M32 and M40 threaded cable entries
- ❑ IP66 and IP69 degree of protection according to EN 60529
- ❑ Each enclosure carries its own part number, thread/size and conformity markings
- ❑ Ambient temperature range: -40 °C / +70 °C



## T-TYPE/C - LOW TEMPERATURE APPLICATIONS

### SUM-UP

- ❑ Enclosures in thermoplastic material, dark grey RAL 7012
- ❑ The Hygienic T-TYPE/C Series enclosures have been specifically designed for food and beverage ambient temperature as low as -50 °C (range: -50 °C / +70 °C)
- ❑ Enclosures in thermoplastic material, dark grey RAL 7012 colour, with high thicknesses providing structural solidity and durability
- ❑ IP66 and IP69 degree of protection according to EN 60529
- ❑ This version differs from the Hygienic T-TYPE/H one for the sealing gaskets made by in accordance with FDA Guideline 21 CFR §177.2600
- ❑ ILME T-TYPE/C series enclosure materials have been selected according to EU n. 10/2011 regulation requirements and each component has been tested according to EU regulation n. 10/2011 and EC regulation n. 1935/2004



**NOTE:** As the characterizing elements of the Hygienic Series are the different sealing gasket material and the different locking lever, hoods and covers without sealing gaskets and locking levers are the same of series T-TYPE Standard.

# HYGIENIC

## T-TYPE/H & T-TYPE/C

### FOCUS ON:

#### 1 Construction

By using the BC-MUL® moulding technique together with the use of MIL.BOX® material, **these enclosures are structurally solid and mechanically robust**, due to their increased thickness.

They are particularly resistant to the main pollutants present in industrial environments. The lever enclosure pegs are built into the enclosures.

The means for fastening the connectors to the enclosures consist of four M3 threaded metal inserts. Compared with metal construction enclosures, which – in order to comply with electrical installation safety norms– must be earthed via a metal connection to the protective earth terminal of the connector insert inside the enclosure, this series of enclosures offers a solution for **total insulation constructions** □ (equivalent to class II) where necessary.

The thermoplastic material used is RAL 7012 dark grey colour and has passed **glow wire** testing (GWEPT) in accordance with the EN IEC 60695-2-11 at **850 °C**, in excess of what required by the intended uses.

The surface mounting, high construction housings are supplied with an open threaded entry and diametrically opposite a closed threaded entry which can be opened by the user if required (with suitable tool).

#### 2 Gaskets

Gaskets have been produced in **HNBR rubber or SILICONE rubber** and have been incorporated in the base flange on bulkhead mounting housings for easier installation.

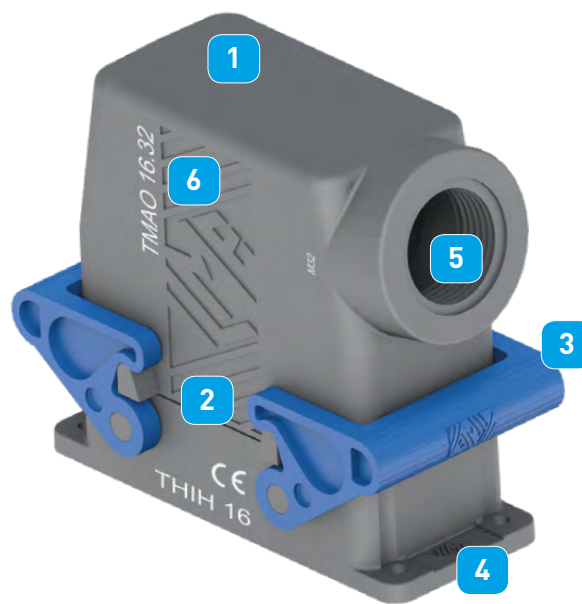
#### 3 Levers

The locking levers have been produced in **self-extinguishing thermoplastic material**, blue RAL 5015 colour.

In accordance with the requirements set forth in **EHEDG Guideline n. 32** "Materials of construction for food equipment in contact with food" (EHEDG = European Hygienic Engineering & Design Group), the closing levers and sealing gaskets are coloured blue to easily identify any accidental contaminations in food products and to facilitate the visual identification of their complete cleanliness.

#### 4 Dimensions

The internal dimensions allow mounting of all connector inserts in their relevant sizes. The external dimensions of the bulkhead mounting housings are similar to those of the corresponding metallic enclosures; hole fixing centres are unchanged. Hoods offer an inner cabling space similar to that of the "high" construction models of the corresponding metal enclosures. Other characteristics are in compliance with the applicable safety standard for electrical connectors, **IEC/EN 61984**.



#### 5 Cable entries

The housing and hood cable entries are available with metric thread, respectively:

- **M25 or M32** for smaller sizes "44.27" and "57.27".
- **M32 or M40** for larger sizes "77.27" and "104.27".

The recent standard **IEC/EN 61076-7-100** regarding metric cable entries for multipole electrical connectors for heavy duty uses, which standardises some main dimensions for entries and their related accessories (gaskets, pressure nuts), have been carefully considered in the product design.

#### 6 Markings

Each enclosure carries its own part number and conformity markings.





T-TYPE / H production lines    **HYGIENIC SERIES**

inserts		page:
CDD	24 poles + ⊕	76
CDS	9 poles + ⊕	-
CDSH	9 poles + ⊕	86
CDSH NC	6 poles + ⊕	95
CNE	6 poles + ⊕	110
CSE	6 poles + ⊕	-
CSH	6 poles + ⊕	110
CSH S	6 poles + ⊕	122
CCE	6 poles + ⊕	130
CSS	6 poles + ⊕	148
CT, CTSE (16A *)	6 poles + ⊕	160
CQE	10 poles + ⊕	168
MIXO	2 modules	262 - 317

\*) only for standard insulating version THIH

housings with single lever  
HNBR gasket



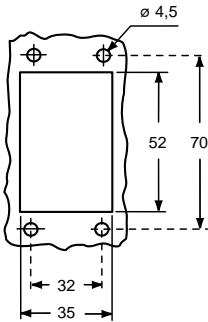
hoods with single lever, top entry covers, HNBR gasket



description	part No.	entry M	part No.	entry M	part No. (with loop)
-------------	----------	------------	----------	------------	-------------------------

bulkhead mounting housing with thermoplastic lever	THIH 06 L				
surface mounting housing, thermoplastic lever, high construction	TAPH 06 L25	25			
surface mounting housing, thermoplastic lever, high construction	TAPH 06 L32	32			
with thermoplastic lever and gasket, high construction			TAVH 06 LG25	25	
with thermoplastic lever and gasket, high construction			TAVH 06 LG32	32	
cover with thermoplastic lever and gasket					THCH 06 LG

panel cut-out for bulkhead mounting housings



TMAO  
Hoods  
(page 480)



TMAV  
Hoods  
(page 480)

TCHC L  
TCHC SL  
Covers  
with eyelet  
(page 481)

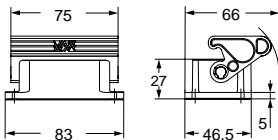


**CALUS** Type 12

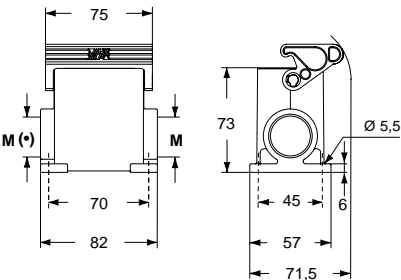


ambient temperature limits -40 °C / +70 °C

THIH L

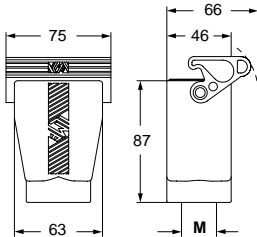


TAPH L

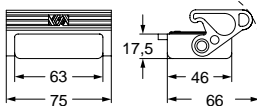


(\*) The surface mounting, high construction housings are supplied with an open threaded entry (\*) and diametrically opposite a closed threaded entry which can be opened by the user if required (with suitable tool).

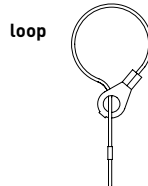
TAVH LG



THCH LG



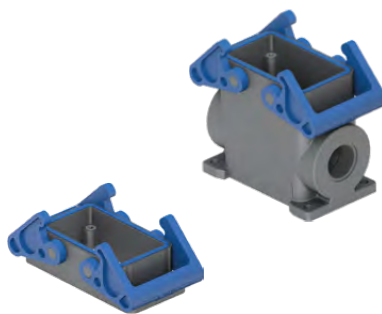
For fixing on hoods



T-TYPE / H production lines **HYGIENIC SERIES**

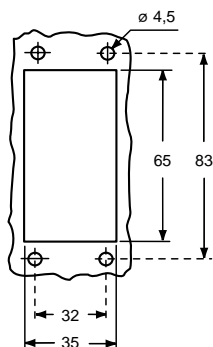
inserts		page:
CDD	42 poles + ⊕	78
CDS	18 poles + ⊕	-
CDSH	18 poles + ⊕	87
CNE	10 poles + ⊕	111
CSE	10 poles + ⊕	-
CSH	10 poles + ⊕	111
CSH S	10 poles + ⊕	123
CCE	10 poles + ⊕	131
CMSH	3+2 (aux) poles + ⊕	136
CMCE	3+2 (aux) poles + ⊕	137
CSS	10 poles + ⊕	149
CT, CTSE (16A) *)	10 poles + ⊕	161
CQE	18 poles + ⊕	169
CX	8/24 poles + ⊕	194
MIXO	3 modules	262 - 317

\*) only for standard insulating version THIH

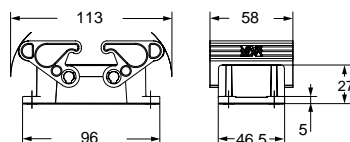
housings with double lever  
HNBR gaskethoods with double lever, top entry  
covers, HNBR gasket

description	part No.	entry M	part No.	entry M	part No. (with loop)
bulkhead mounting housing with thermoplastic levers	<b>THIH 10</b>				
surface mounting housing, thermoplastic levers, high construction	<b>TAPH 10.25</b>	25			
surface mounting housing, thermoplastic levers, high construction	<b>TAPH 10.32</b>	32			
with thermoplastic levers and gasket, high construction			<b>TAVH 10 G25</b>	25	
with thermoplastic levers and gasket, high construction			<b>TAVH 10 G32</b>	32	
with 2 thermoplastic levers and gasket					<b>THCH 10 G</b>

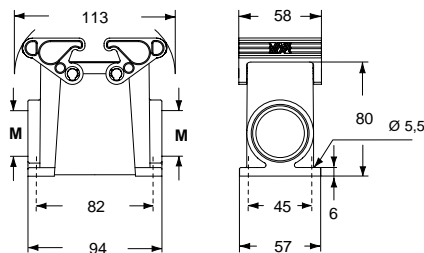
panel cut-out for bulkhead mounting housings

TMA0  
Hoods  
(page 482)TMAV  
Hoods  
(page 482)TCHC  
TCHC S  
Covers  
with eyelet  
(page 483)

## THIH

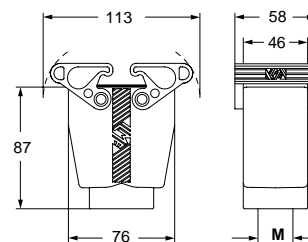


## TAPH

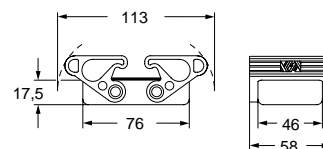


The surface mounting, high construction housings are supplied with an open threaded entry and diametrically opposite a closed threaded entry which can be opened by the user if required (with suitable tool).

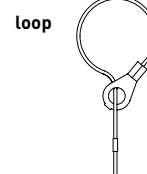
## TAVH G



## THCH G



## For fixing on hoods

C<sup>®</sup>ALUS Type 12

ambient temperature limits -40 °C / +70 °C

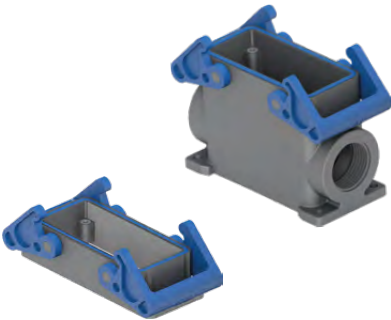


T-TYPE / H production lines    **HYGIENIC SERIES**

inserts		page:
CD	40 poles + ⊕	70
CDD	72 poles + ⊕	79
CDS	27 poles + ⊕	-
CDSH	27 poles + ⊕	88
CNE	16 poles + ⊕	112
CSE	16 poles + ⊕	-
CSH	16 poles + ⊕	112
CSH S	16 poles + ⊕	124
CCE	16 poles + ⊕	132
CMSH, CMCE	6+2 (aux) poles + ⊕	138 - 139
CSS	16 poles + ⊕	150
CT, CTSE (16A) *)	16 poles + ⊕	162
CQE	32 poles + ⊕	170
CQEE	40 poles + ⊕	176
CP	6 poles + ⊕	178
CX	6/12, 6/36 and 12/2 poles + ⊕	197 - 199
CX	4/0 and 4/2 poles + ⊕	200 - 201
MIXO	4 modules	262 - 317

\*) only for standard insulating version THIH

housings with double lever  
HNBR gasket



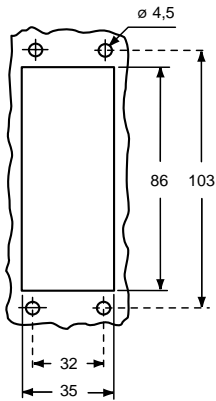
hoods with double lever, top entry  
covers, HNBR gasket



description	part No.	entry M	part No.	entry M	part No. (with loop)
-------------	----------	------------	----------	------------	-------------------------

bulkhead mounting housing with thermoplastic levers	THIH 16				
surface mounting housing, thermoplastic levers, high construction	TAPH 16.32	32			
surface mounting housing, thermoplastic levers, high construction	TAPH 16.40	40			
with thermoplastic levers and gasket, high construction			TAVH 16 G32	32	
with thermoplastic levers and gasket, high construction			TAVH 16 G40	40	
cover with 2 thermoplastic levers and gasket					THCH 16 G

panel cut-out for bulkhead mounting housings



TMAO  
Hoods  
(page 484)

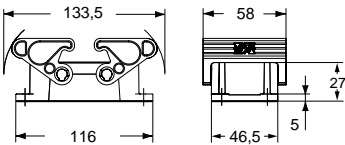


TMAV  
Hoods  
(page 484)

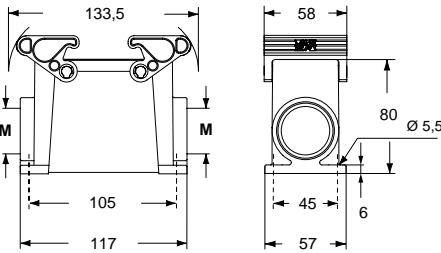
TCHC  
TCHC S  
Covers  
with eyelet  
(page 485)



THIH

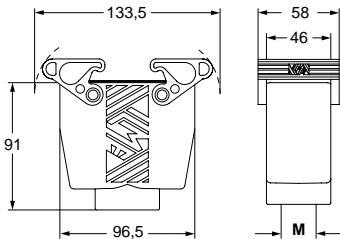


TAPH

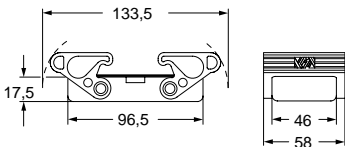


The surface mounting, high construction housings are supplied with an open threaded entry and diametrically opposite a closed threaded entry which can be opened by the user if required (with suitable tool).

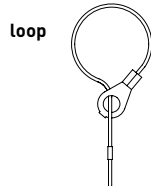
TAVH G



THCH G



For fixing on hoods



C<sup>®</sup> **US** Type 12



ambient temperature limits -40 °C / +70 °C

**T-TYPE / H production lines HYGIENIC SERIES**

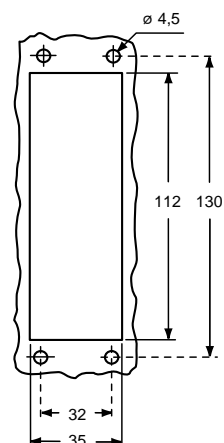
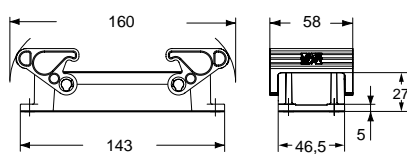
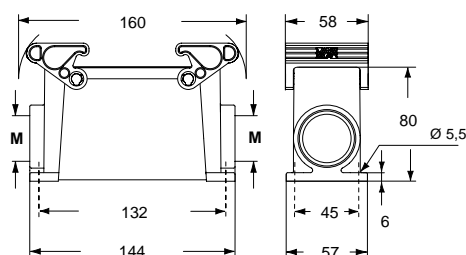
inserts		page:
CD	64 poles + ⊕	72
CDD	108 poles + ⊕	81
CDS	42 poles + ⊕	-
CDSH	42 poles + ⊕	89
CNE	24 poles + ⊕	113
CSE	24 poles + ⊕	-
CSH	24 poles + ⊕	113
CSH S	24 poles + ⊕	125
CCE	24 poles + ⊕	133
CMSH	10+2 (aux) poles + ⊕	140
CMCE	10+2 (aux) poles + ⊕	141
CSS	24 poles + ⊕	151
CT, CTSE (16A) *)	24 poles + ⊕	163
CQE	46 poles + ⊕	171
CQEE	64 poles + ⊕	177
CX	4/8 and 6/6 poles + ⊕	204, 206
MIXO	6 modules	262 - 317

\*) only for standard insulating version THIH

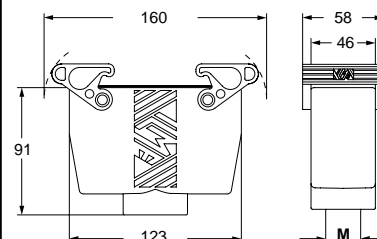
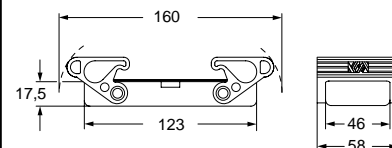
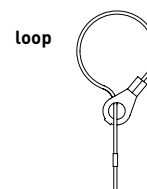
**housings with double lever  
HNBR gasket****hoods with double lever, top entry  
covers, HNBR gasket**

description	part No.	entry M	part No.	entry M	part No. (with loop)
bulkhead mounting housing with thermoplastic levers	<b>THIH 24</b>				
surface mounting housing, thermoplastic levers, high construction	<b>TAPH 24.32</b>	32			
surface mounting housing, thermoplastic levers, high construction	<b>TAPH 24.40</b>	40			
with thermoplastic levers and gasket, high construction			<b>TAVH 24 G32</b>	32	
with thermoplastic levers and gasket, high construction			<b>TAVH 24 G40</b>	40	
cover with 2 thermoplastic levers and gasket					<b>THCH 24 G</b>

panel cut-out for bulkhead mounting housings

**TMAO**  
Hoods  
(page 486)**TMAV**  
Hoods  
(page 486)**TCHC**  
**TCHC S**  
Covers  
with eyelet  
(page 487)**THIH****TAPH**

The surface mounting, high construction housings are supplied with an open threaded entry and diametrically opposite a closed threaded entry which can be opened by the user if required (with suitable tool).

**TAVH G****THCH G****For fixing on hoods****CAUS** Type 12

ambient temperature limits -40 °C / +70 °C





enclosures:  
HYGIENIC T-TYPE / H IP66/IP69  
(only M25 or M32)

page:  
501 - 504

HYGIENIC M25 cable gland

HYGIENIC M32 cable gland

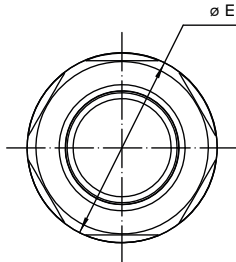
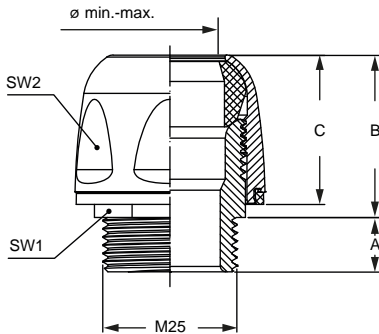


description			part No.	M threading	part No.	M threading
cable glands M25X1,5 for cable ø 12,0-15,0 for cable ø 15,0-18,0			AH M25IF AH M25IFL	M25 M25		
cable glands M32X1,5 for cable ø 18,0-21,0 for cable ø 20,0-23,0					AH M32IF AH M32IFL	M32 M32

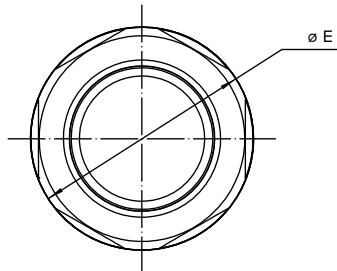
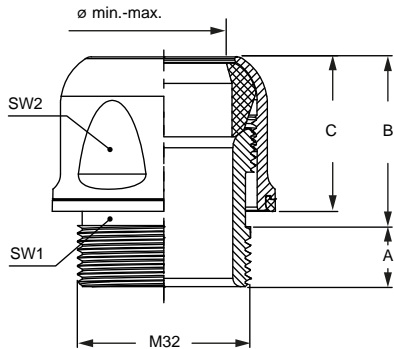
NOTE: For details about their installation refer to the instruction sheet accompanying the product:

- ECOLAB compliant
- EHEDG compliant
- IP68, IP69 degree of protection
- ambient temperature limit: -20 °C ... +85 °C
- us (UL Recognized Component for USA and Canada),  
is (UL Listed Product for USA and Canada),  
 certified

Designed  
and  
certified in  
accordance  
with the  
EHEDG  
guidelines



part No.	A	B	C	SW1	SW2	ø E	ø min.-max.
AH M25IF	10	30	27	24	32	34,9	12,0-15,0
AH M25IFL	10	30	27	24	32	34,9	15,0-18,0



part No.	A	B	C	SW1	SW2	ø E	ø min.-max.
AH M32IF	11	32	28	30	38	40,9	18,0-21,0
AH M32IFL	11	32	28	30	38	40,9	20,0-23,0

**T-TYPE / C low-temperature HYGIENIC SERIES**

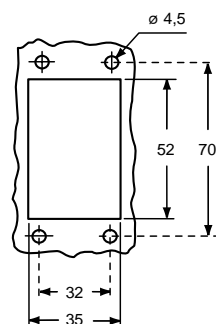
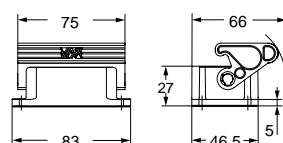
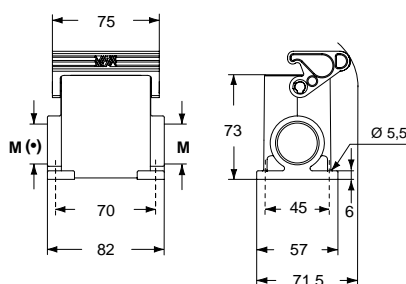
inserts		page:
CDD	24 poles + ⊕	76
CDS	9 poles + ⊕	-
CDSH	9 poles + ⊕	86
CDSH NC	6 poles + ⊕	95
CNE	6 poles + ⊕	110
CSE	6 poles + ⊕	-
CSH	6 poles + ⊕	110
CSH S	6 poles + ⊕	122
CCE	6 poles + ⊕	130
CSS	6 poles + ⊕	148
CT, CTSE (16A) *	6 poles + ⊕	160
CQE	10 poles + ⊕	168
MIXO	2 modules	262 - 317

\*) only for standard insulating version THIC

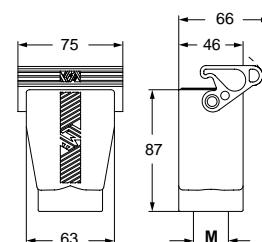
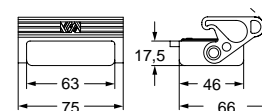
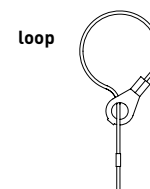
 **housings with single lever  
SILICONE gasket****hoods with single lever, top entry  
covers, SILICONE gasket**

description	part No.	entry M	part No.	entry M	part No. (with loop)
bulkhead mounting housing with thermoplastic lever	<b>THIC 06 L</b>				
surface mounting housing, thermoplastic lever, high construction	<b>TAPC 06 L25</b>	25			
surface mounting housing, thermoplastic lever, high construction	<b>TAPC 06 L32</b>	32			
with thermoplastic lever and gasket, high construction			<b>TAVC 06 LG25</b>	25	
with thermoplastic lever and gasket, high construction			<b>TAVC 06 LG32</b>	32	
cover with thermoplastic lever and gasket					<b>THCC 06 LG</b>

panel cut-out for bulkhead mounting housings

**TMA0  
Hoods  
(page 480)****TMAV  
Hoods  
(page 480)****TCHC L  
TCHC SL  
Covers  
with eyelet  
(page 481)****THIC L****TAPC L**

(\*) The surface mounting, high construction housings are supplied with an open threaded entry (\*) and diametrically opposite a closed threaded entry which can be opened by the user if required (with suitable tool).

**TAVC LG****THCC LG****For fixing on hoods****CAUS** Type 12

ambient temperature limits -50 °C / +70 °C

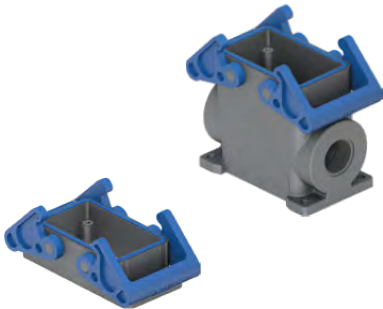


T-TYPE / C low-temperature HYGIENIC SERIES

inserts		page:
CDD	42 poles + ⊕	78
CDS	18 poles + ⊕	-
CDSH	18 poles + ⊕	87
CNE	10 poles + ⊕	111
CSE	10 poles + ⊕	-
CSH	10 poles + ⊕	111
CSH S	10 poles + ⊕	123
CCE	10 poles + ⊕	131
CMSH	3+2 (aux) poles + ⊕	136
CMCE	3+2 (aux) poles + ⊕	137
CSS	10 poles + ⊕	149
CT, CTSE (16A) *)	10 poles + ⊕	161
CQE	18 poles + ⊕	169
CX	8/24 poles + ⊕	194
MIXO	3 modules	262 - 317

\*) only for standard insulating version THIC

housings with double lever  
SILICONE gasket

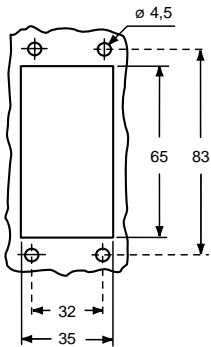


hoods with double lever, top entry  
covers, SILICONE gasket



description	part No.	entry M	part No.	entry M	part No. (with loop)
bulkhead mounting housing with thermoplastic levers	THIC 10				
surface mounting housing, thermoplastic levers, high construction	TAPC 10.25	25			
surface mounting housing, thermoplastic levers, high construction	TAPC 10.32	32			
with thermoplastic levers and gasket, high construction			TAVC 10 G25	25	
with thermoplastic levers and gasket, high construction			TAVC 10 G32	32	
cover with 2 thermoplastic levers and gasket					THCC 10 G

panel cut-out for bulkhead mounting housings



TMAO  
Hoods  
(page 482)

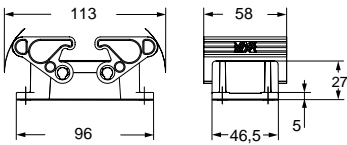


TMAV  
Hoods  
(page 482)

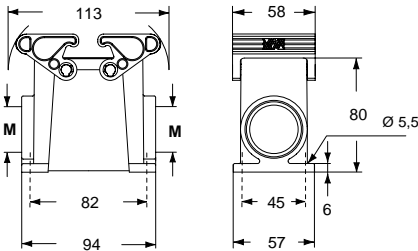
TCHC  
TCHC S  
Covers  
with eyelet  
(page 483)



THIC

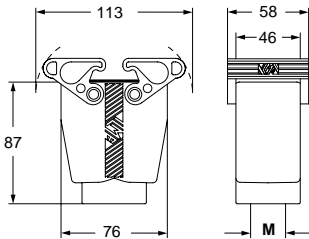


TAPC

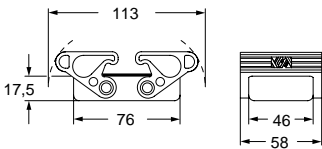


The surface mounting, high construction housings are supplied with an open threaded entry and diametrically opposite a closed threaded entry which can be opened by the user if required (with suitable tool).

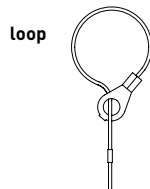
TAVC G



THCC G



For fixing on hoods



CALUS Type 12



ambient temperature limits -50 °C / +70 °C

**T-TYPE / C low-temperature HYGIENIC SERIES**

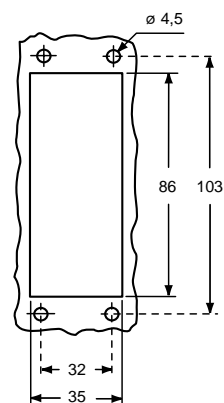
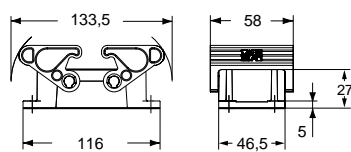
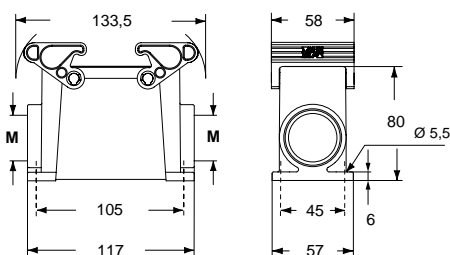
inserts		page:
CD	40 poles + ⊕	70
CDD	72 poles + ⊕	79
CDS	27 poles + ⊕	-
CDSH	27 poles + ⊕	88
CNE	16 poles + ⊕	112
CSE	16 poles + ⊕	-
CSH	16 poles + ⊕	112
CSH S	16 poles + ⊕	124
CCE	16 poles + ⊕	132
CMSH, CMCE	6+2 (aux) poles + ⊕	138 - 139
CSS	16 poles + ⊕	150
CT, CTSE (16A) *)	16 poles + ⊕	162
CQE	32 poles + ⊕	170
CQEE	40 poles + ⊕	176
CP	6 poles + ⊕	178
CX	6/12, 6/36 and 12/2 poles + ⊕	197 - 199
CX	4/0 and 4/2 poles + ⊕	200 - 201
MIXO	4 modules	262 - 317

\*) only for standard insulating version THIC

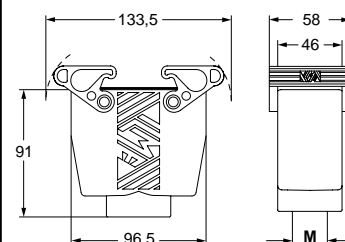
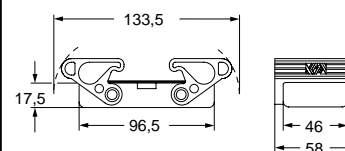
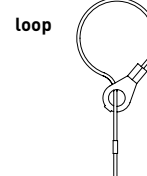
**housings with double lever  
SILICONE gasket****hoods with double lever, top entry  
covers, SILICONE gasket**

description	part No.	entry M	part No.	entry M	part No. (with loop)
bulkhead mounting housing with thermoplastic levers	<b>THIC 16</b>				
surface mounting housing, thermoplastic levers, high construction	<b>TAPC 16.32</b>	32			
surface mounting housing, thermoplastic levers, high construction	<b>TAPC 16.40</b>	40			
with thermoplastic levers and gasket, high construction			<b>TAVC 16 G32</b>	32	
with thermoplastic levers and gasket, high construction			<b>TAVC 16 G40</b>	40	
cover with 2 thermoplastic levers and gasket					<b>THCC 16 G</b>

panel cut-out for bulkhead mounting housings

**TMA0  
Hoods  
(page 484)****TMAV  
Hoods  
(page 484)****TCHC  
TCHC S  
Covers  
with eyelet  
(page 485)****THIC****TAPC**

The surface mounting, high construction housings are supplied with an open threaded entry and diametrically opposite a closed threaded entry which can be opened by the user if required (with suitable tool).

**TAVC G****THCC G****For fixing on hoods****CAUS** Type 12

ambient temperature limits -50 °C / +70 °C





T-TYPE / C low-temperature HYGIENIC SERIES

inserts		page:
CD	64 poles + ⊕	72
CDD	108 poles + ⊕	81
CDS	42 poles + ⊕	-
CDSH	42 poles + ⊕	89
CNE	24 poles + ⊕	113
CSE	24 poles + ⊕	-
CSH	24 poles + ⊕	113
CSH S	24 poles + ⊕	125
CCE	24 poles + ⊕	133
CMSH	10+2 (aux) poles + ⊕	140
CMCE	10+2 (aux) poles + ⊕	141
CSS	24 poles + ⊕	151
CT, CTSE (16A) *)	24 poles + ⊕	163
CQE	46 poles + ⊕	171
CQEE	64 poles + ⊕	177
CX	4/8 and 6/6 poles + ⊕	204, 206
MIXO	6 modules	262 - 317

\*) only for standard insulating version THIC

housings with double lever  
SILICONE gasket

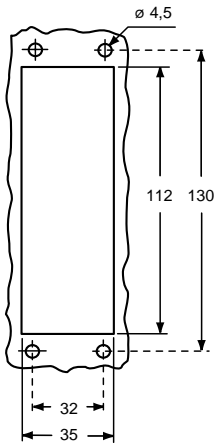


hoods with double lever, top entry  
covers, SILICONE gasket



description	part No.	entry M	part No.	entry M	part No. (with loop)
bulkhead mounting housing with thermoplastic levers	THIC 24				
surface mounting housing, thermoplastic levers, high construction	TAPC 24.32	32			
surface mounting housing, thermoplastic levers, high construction	TAPC 24.40	40			
with thermoplastic levers and gasket, high construction			TAVC 24 G32	32	
with thermoplastic levers and gasket, high construction			TAVC 24 G40	40	
cover with 2 thermoplastic levers and gasket					THCC 24 G

panel cut-out for bulkhead mounting housings



TMAO  
Hoods  
(page 486)

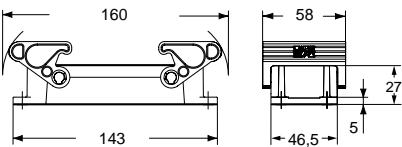


TMAV  
Hoods  
(page 486)

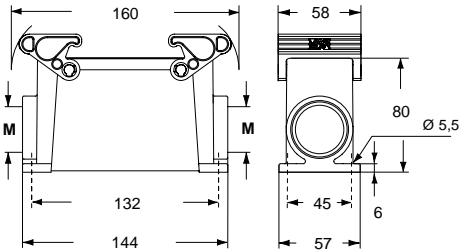


TCHC  
TCHC S  
Covers  
with eyelet  
(page 487)

THIC

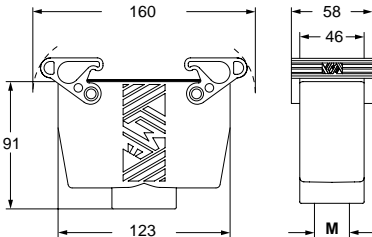


TAPC

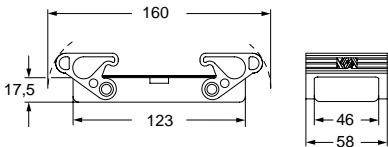


The surface mounting, high construction housings are supplied with an open threaded entry and diametrically opposite a closed threaded entry which can be opened by the user if required (with suitable tool).

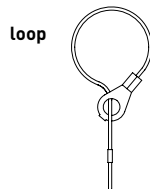
TAVC G



THCC G



For fixing on hoods



CALUS Type 12



ambient temperature limits -50 °C / +70 °C

CR..BPE PE earth jumpers

inserts		page:
CD	40, 64 poles + ⊕	70, 72
CDD	24, 42, 72, 108 poles + ⊕	76 - 81
CDS	9, 18, 27, 42 poles + ⊕	-
CDSH	9, 18, 27, 42 poles + ⊕	86 - 89
CNE	6, 10, 16, 24 poles + ⊕	110 - 113
CSE	6, 10, 16, 24 poles + ⊕	-
CSH	6, 10, 16, 24 poles + ⊕	110 - 113
CSH S	6, 10, 16, 24 poles + ⊕	122 - 125
CCE	6, 10, 16, 24 poles + ⊕	130 - 133
CMSH	3, 6, 10 +2 (aux) poles + ⊕	136 - 140
CMCE	3, 6, 10 +2 (aux) poles + ⊕	137 - 141
CSS	6, 10, 16, 24 poles + ⊕	148 - 151
CT, CTSE	6, 10, 16, 24 poles + ⊕	160 - 163
CQE	10, 18, 32, 46 poles + ⊕	168 - 171
CQEE	40, 64 poles + ⊕	176 - 177
CP	6 poles + ⊕	178
CX	8/24, 6/36, 12/2 poles + ⊕	194 - 199

PE optional earth jumpers



description

part No.

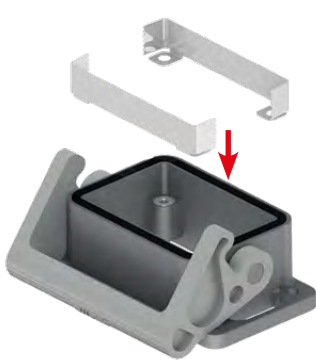
galvanized brass, to be optionally used with  
T-TYPE enclosures series:  
for inserts "44.27" size  
for inserts "57.27" size  
for inserts "77.27" size  
for inserts "104.27" size

CR 06 BPE  
CR 10 BPE  
CR 16 BPE  
CR 24 BPE

CR...BPE accessories PE (protective earth) jumpers  
could be mounted under the connector inserts for the  
connection of the two insert's PE plates.

To guarantee to proper alignment of the insert inside the  
enclosure, it is necessary to use both jumpers supplied  
(in the same housing or hood); the jumpers are not  
usable individually.

Furthermore the user is responsible for verifying the  
continuity of the PE connection ⊕ (male and female)  
independently of using CR...BPE earth jumpers.

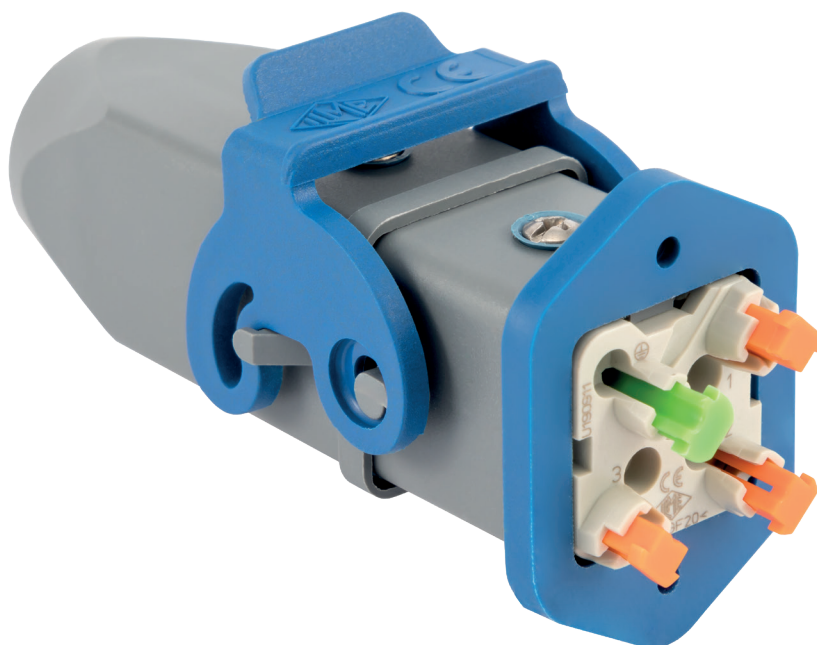


Optional  
earth jumpers

---

## CKH - MKH HYGIENIC ENCLOSURES SIZE "21.21"

---



Made by thermoplastic insulating materials  
suitable for splash area, qualified for resistance  
to cleaning agents by ECOLAB and in compliance  
with EHEDG Guideline no. 32



Find more  
information on  
our products at  
[www.ilme.com](http://www.ilme.com)

# TECHNICAL FEATURES

## CKH - MKH HYGIENIC ENCLOSURES

The new series **CKH – MKH Hygienic** size “21.21” enclosures, completes the offer of hygienic connector enclosures of series T-Type Hygienic, by adding enclosures for the growing family of size “21.21” connector inserts, currently comprising the models listed in **Table 1** below (power, signal and data connectors, including fibre optics).

**Table 1 – “21.21” connector inserts suitable for CKH-MKH Hygienic enclosures**

CKF /M 03 /04 ●
CKSHF /M 03 /04 ●
CDF /M 07 ●
CDF /M 08 ●
CQF /M 05 ●
CQF /M 07 ●
CQF /M 12 ●
CQF /M 21 ●
CQ4F /M 03 ●
CQ4F /M 02 ●
CQ4F /M 02 H ●
CQ4F /M 03/2 ●
CX 1/2 BDF /M ○
CXL SF /SM, CXL 2/4 SF /SM, CXL 2/4 PF /PM, CXL 2/4 PFH /PMH, CXL PF /PM ○
CLK 04 SCF /SCF-H /SCM ○
CUK 2FT, CUK 3FT○
CJ KF /KM ○
CKJ 8M ○
CJK 8FT /8MT ○
CJK 8IFT, CJK 8BIFT, CJK 8PIFT, CJK 8 IMT ○
● The male insert of these models are provided with a standard sealing gasket. For hygienic applications with CKH – MKH hygienic enclosures this gasket must be replaced with the special hygienic gasket <b>CR 21.21 GMH</b> to be purchased separately.
○ The male inserts of these models are not provided with that sealing gasket on the male insert, hence for hygienic applications they are deemed to be used only in hygienic enclosures with glued hygienic gasket (identified by letter G in the first portion of their part no.).
<u>All inserts (male and female) need replacement of the standard screw or screw with gasket (according to models) with the corresponding hygienic screw with gasket kit <b>CKRH 65</b> or <b>CKRH 65 D</b> (only inserts CD 07 and CD 08).</u>

The available models of CKH – MKH Hygienic enclosures are described in the following Table 2.

**Table 2 – CKH – MKH Hygienic enclosures size “21.21”**

Part no.	Description
CKH 03 I	bulkhead mounting housing
CKH 03 IA	angled bulkhead mounting housing
MKH IAP20	angled bulkhead mounting housing with M20 cable entry
MKH V20	hood with pegs, top entry M20
MKH V25	hood with pegs, top entry M25
MKH VA20	hood with pegs, side entry M20
MKH VG20	hood with lever, top entry M20
MKH VG25	hood with lever, top entry M25
CKH 03 C	cover with pegs and gasket, for female inserts (eyelet cord)
CKH 03 CS	cover with pegs and gasket, for female inserts (loop cord)
CKH 03 CA	cover with pegs, for male inserts (eyelet cord)
CKH 03 CAS	cover with pegs, for male inserts (loop cord)
CKH 03 CX	cover with lever and gasket, for female inserts (eyelet cord)
CKH 03 CXA	cover with lever, for male inserts (loop cord)
MKGH V20	hood with pegs and glued gasket, top entry M20
MKGH V25	hood with pegs and glued gasket, top entry M25
MKGH VA20	hood with pegs and glued gasket, angled entry M20

This new series offers three **bulkhead mounting housings** (the straight model and two angled models, one closed, the other with M20 side cable entry), five **hoods** differing by the size of cable entry (M20, M25) and either presence or absence of locking pegs or lever, e.g. for cable-to-cable joints, and the same **models with glued gasket** (letter G in the first portion of their part no.), for those inserts that by design do not include the sealing gasket on the male insert (models marked by ○ in the above table). The series is completed with all range of covers (6 models) matching the various applications.

All inserts need to be provided with the kit **CKRH 65** or **CKRH 65 D** (for CD 07 and CD 08 inserts), to be purchased separately: screw with food grade gasket (blue coloured). This kit must replace either the standard screw or screw with gasket provided with the insert.

The sealing gasket of those male inserts that include it (see Table 1, items marked with ●) has to be replaced with the special hygienic sealing gasket **CR 21.21 GMH**, blue coloured, for easier detection in case of loss in the food path, to be purchased separately

- Series **CKH-MKH Hygienic** made (like T-Type Hygienic) by thermoplastic insulating materials compatible with the temperature range of standard hygienic applications and qualified for resistance to a wide set of cleaning agents by ECOLAB, and in compliance with the EHEDG Guideline no. 32. Same for the material of the locking lever and that of the sealing gaskets (flange, interface and under the head of fixing screw).

- Moving parts (locking lever) or parts that might be lost (sealing gaskets) blue coloured to be easily detectable by remote image detection systems.

- Locking lever detectable by metal detectors in case of accidental loss and fall inside the conveyor belt (food path).

- IP degree of protection: **IP66/IP67/IP69**.

- Upper and Lower Limiting Temperature (ULT – LLT): -40 °C ... +70 °C.



## inserts

CK	3 and 4 poles + ⊕	58
CKS	3 and 4 poles + ⊕	-
CKSH	3 and 4 poles + ⊕	63
CD	7 poles + ⊕	66
CD	8 poles	67
CQ4	2 poles + ⊕	182
CQ4 H	2 poles + ⊕	183
CQ4	3 poles + ⊕	184
CQ4	3+2 (aux) poles + ⊕	16 *
CO	5 poles + ⊕	186
CO	7 poles + ⊕	187
CO	12 poles + ⊕	189
CQ	21 poles	190

only for I (straight) housings (if the counterpart has glued gasket):

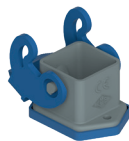
CJ KF	223
CJK 8FT	226
CJK 8IFT	228
CUK 2FT, CUK 3FT	236
CLK 04 SC	239
CX 1/2 BD	243
CXL 2/4 SF, CXL 2/4 SM	250
CXL SF, CXL SM	250

refer to CN.19 pages

\* refer to NEWS 2020 pages

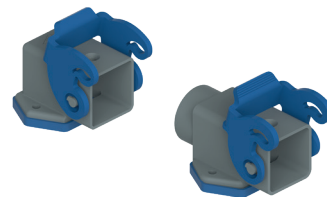
page:

## bulkhead mounting housings



FROM OCTOBER 2020

## angled bulkhead mounting housings



FROM OCTOBER 2020

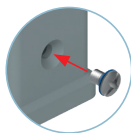
description	part No.	part No.	part No. (entry M20)
with lever	CKH 03 I		
without cable entry, with lever <sup>1)</sup>		CKH 03 IA	
with cable entry and lever <sup>1)</sup>			MKH IAP20
gasket and screw kit for IP66/IP67/IP69 <sup>2)</sup>	CKRH 65	CKRH 65	
gasket and screw kit for IP66/IP67/IP69 <sup>2)</sup> specific for CD 07/08 inserts	CKRH 65 D	CKRH 65 D	

## 1) Not suitable for inserts:

- CQ4 2 poles + ⊕
- CQ4 H 2 poles + ⊕
- CQ4 3 poles + ⊕
- CQ4 3+2 (aux) poles + ⊕

2) To obtain the required IP66/IP67/IP69 degree of protection, a kit with insert fixing screw and gasket **must be purchased** separately to replace the screw already provided with the inserts (even when it is already a fixing screw and gasket).

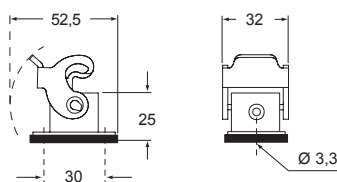
NOTE: Housing type may vary upon specific part No.



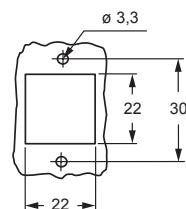
CR 21.21 GMH  
HYGIENIC gasket  
for male inserts  
"21.21" size  
(page 114)



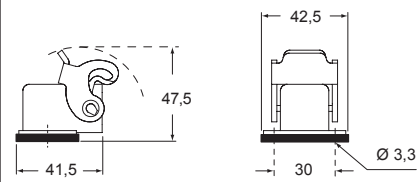
## CKH I



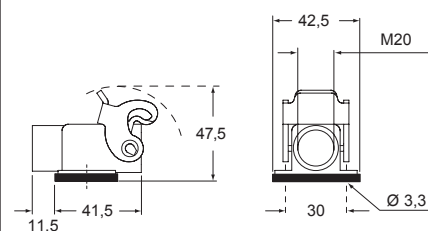
## panel cut-out for enclosures



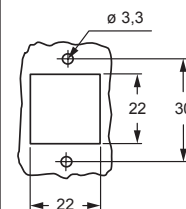
## CKH IA



## MKH IAP



## panel cut-out for enclosures



cURus  
Type 12  
Type 4/4X only  
with CKRH 65 (D) pending



IP66/IP67/IP69 with CKRH 65 (D) <sup>1)</sup>

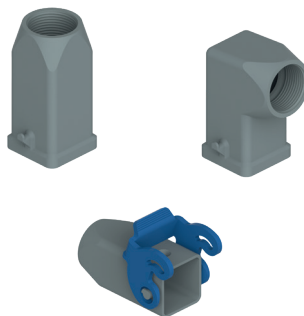
## inserts

page:

CK	3 poles + ⊕	58
CK	4 poles + ⊕	58
CKS	3 poles + ⊕	-
CKS	4 poles + ⊕	-
CKSH	3 poles + ⊕	63
CKSH	4 poles + ⊕	63
CD	7 poles + ⊕	66
CD	8 poles	67
CQ4M	2 poles + ⊕	182
CQ4M H	2 poles + ⊕	183
CQ4M	3 poles + ⊕	184
CQ4M	3+2 (aux) poles + ⊕	16 *
CQ	5 poles + ⊕	186
CQ	7 poles + ⊕	187
CQ	12 poles + ⊕	189
CQ	21 poles	190

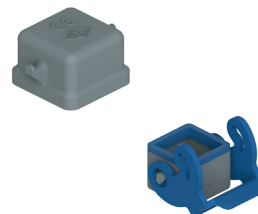
refer to CN.19 pages

## hoods



FROM OCTOBER 2020

## covers



FROM OCTOBER 2020

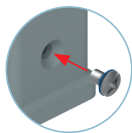
description	part No. (entry M20)	part No. (with eyelet)	part No. (with loop)
with pegs, top entry <sup>1)</sup>	MKH V20		
with pegs, side entry <sup>1)</sup>	MKH VA20		
with lever, top entry <sup>1)</sup>	MKH VG20		
with pegs and gasket, for female inserts		CKH 03 C	CKH 03 CS
with pegs, for male inserts		CKH 03 CA	CKH 03 CAS
with lever and gasket, for female inserts			CKH 03 CX
with lever, for male inserts			CKH 03 CXA
gasket and screw kit for IP66/IP67/IP69 <sup>2)</sup>	CKRH 65		
gasket and screw kit for IP66/IP67/IP69 <sup>2)</sup> specific for CD 07/08 inserts	CKRH 65 D		

<sup>1)</sup> Not suitable for inserts:

- CQ4 2 poles + ⊕
- CQ4 H 2 poles + ⊕
- CQ4 3 poles + ⊕
- CQ4 3+2 (aux) poles + ⊕

<sup>2)</sup> To obtain the required IP66/IP67/IP69 degree of protection, a kit with insert fixing screw and gasket **must be purchased** separately to replace the screw already provided with the inserts (even when it is already a fixing screw and gasket).

NOTE: Housing type may vary upon specific part No.



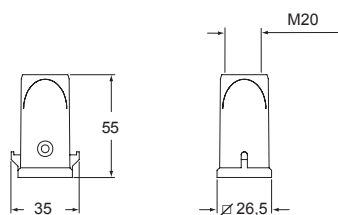
CR 21.21 GMH  
HYGIENIC gasket  
for male inserts  
"21.21" size  
(page 114)



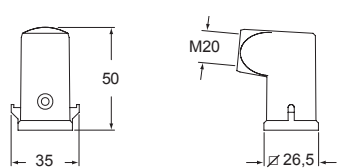
cURus  
Type 12  
Type 4/4X only  
with CKRH 65 (D) pending

IP66/IP67/IP69 with CKRH 65 (D) <sup>1)</sup>

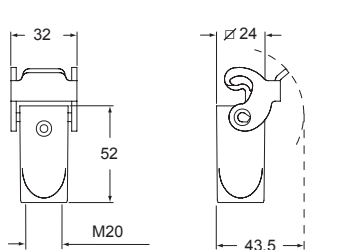
## MKH V



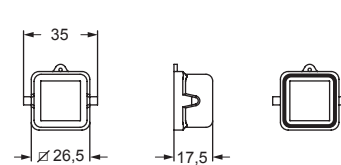
## MKH VA



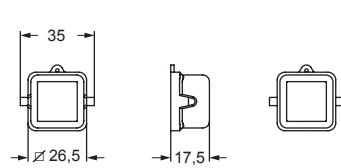
## MKH VG



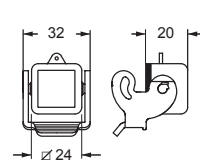
## CKH C - CKH CS



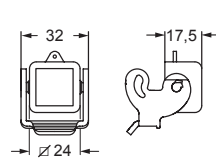
## CKH CA - CKH CAS



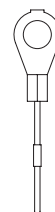
## CKH CX



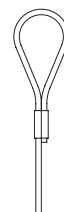
## CKH CXA

For fixing  
on housings

eyelet

For fixing  
on hoods

loop



## inserts

CK	3 and 4 poles + ⊕	58
CKS	3 and 4 poles + ⊕	-
CKSH	3 and 4 poles + ⊕	63
CD	7 poles + ⊕	66
CD	8 poles	67
CQ4	2 poles + ⊕	182
CQ4 H	2 poles + ⊕	183
CQ4	3 poles + ⊕	184
CQ4	3+2 (aux) poles + ⊕	16 *
CQ	5 poles + ⊕	186
CQ	7 poles + ⊕	187
CQ	12 poles + ⊕	189
CQ	21 poles	190

page:

## hood



refer to CN.19 pages

\* refer to NEWS 2020 pages



FROM OCTOBER 2020

## description

part No.  
(entry M25)

with pegs, top entry

MKH V25

gasket and screw kit  
for IP66/IP67/IP69 1)

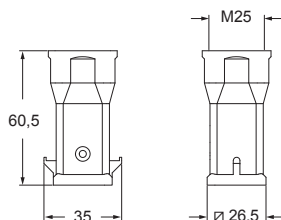
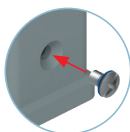
CKRH 65

gasket and screw kit for IP66/IP67/IP69 1)  
specific for CD 07/08 inserts

CKRH 65 D

1) To obtain the required IP66/IP67/IP69 degree of protection, a kit with insert fixing screw and gasket **must be purchased** separately to replace the screw already provided with the inserts (even when it is already a fixing screw and gasket).

NOTE: Housing type  
may vary upon  
specific part No.



CR 21.21 GMH  
HYGIENIC gasket  
for male inserts  
"21.21" size  
(page 114)



cURus  
Type 12  
Type 4/4X only  
with CKRH 65 (D) pending



IP66/IP67/IP69 with CKRH 65 (D) 1)

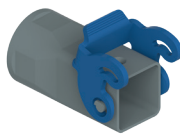
## MKH production lines HYGIENIC SERIES

## inserts

CK	3 and 4 poles + ⊕	58
CKS	3 and 4 poles + ⊕	-
CKSH	3 and 4 poles + ⊕	63
CD	7 poles + ⊕	66
CD	8 poles	67
CQ4	2 poles + ⊕	182
CQ4 H	2 poles + ⊕	183
CQ4	3 poles + ⊕	184
CQ4	3+2 (aux) poles + ⊕	16 *
CQ	5 poles + ⊕	186
CQ	7 poles + ⊕	187
CQ	12 poles + ⊕	189
CQ	21 poles	190
CLK 04 SC		239
CX 1/2 BD		243
CXL 2/4 PF, CXL 2/4 PFH		251
CXL 2/4 PM, CXL 2/4 PMH		251
CXL PF, CXL PM		251

page:

## hood



refer to CN.19 pages

\* refer to NEWS 2020 pages



FROM OCTOBER 2020

## description

part No.  
(entry M25)

with lever, top entry

MKH VG25

gasket and screw kit  
for IP66/IP67/IP69 1)

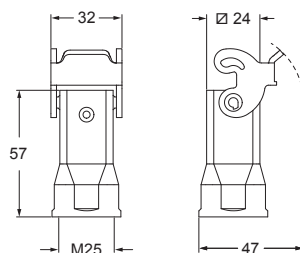
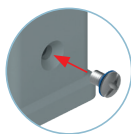
CKRH 65

gasket and screw kit for IP66/IP67/IP69 1)  
specific for CD 07/08 inserts

CKRH 65 D

1) To obtain the required IP66/IP67/IP69 degree of protection, a kit with insert fixing screw and gasket **must be purchased** separately to replace the screw already provided with the inserts (even when it is already a fixing screw and gasket).

NOTE: Housing type  
may vary upon  
specific part No.



CR 21.21 GMH  
HYGIENIC gasket  
for male inserts  
"21.21" size  
(page 114)



cURus  
Type 12  
Type 4/4X only  
with CKRH 65 (D) pending



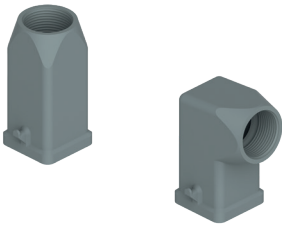
IP66/IP67/IP69 with CKRH 65 (D) 1)

inserts	page:
CJ KM	223
CJK 8MT	226
CJK 8IMT *	226, 228
CUK 2FT	236
CUK 3FT	236
CLK 04 SC *	239
CX 1/2 BD	243
CXL 2/4 PF	251
CXL 2/4 PFH	251
CXL 2/4 PM	251
CXL 2/4 PMH	251
CXL PF	251
CXL PM	251

\* cannot be used with angled enclosures  
(part No. MKGH VA20)

refer to CN.19 pages

hood  
with glued gasket



FROM OCTOBER 2020

description

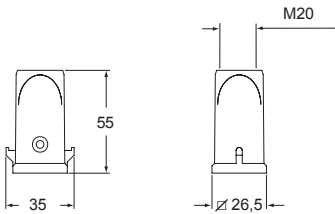
part No.  
(entry M20)

with pegs and glued gasket, top entry  
with pegs and glued gasket, side entry

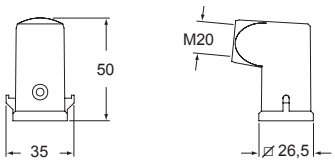
MKGH V20  
MKGH VA20

▲ Suitable for DESINA® CXL inserts and male inserts  
without gasket.

MKGH V



MKGH VA



cURus  
Type 4/4X/12  
pending



**MKGH** production lines **HYGIENIC SERIES** **DESINA®** ▲

inserts	page:
CQ4M 2 poles + ⊕	182
CQ4M H 2 poles + ⊕	183
CQ4M 3 poles + ⊕	184
CQ4M 3+2 (aux) poles + ⊕	16 *
CJ KM	223
CJK 8MT	226
CJK 8IMT	226, 228
CJK 8M	233
CUK 2FT, CUK 3FT	236
CLK 04 SC	239
CX 1/2 BD	243
CXL 2/4 PF, CXL 2/4 PFH	251
CXL 2/4 PM, CXL 2/4 PMH	251
CXL PF, CXL PM	251

refer to CN.19 pages

\* refer to NEWS 2020 pages

hood  
with glued gasket



FROM OCTOBER 2020

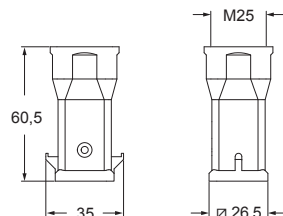
description

part No.  
(entry M25)

with pegs, top entry

**MKGH V25**

▲ Suitable for DESINA® CXL inserts and male inserts without gasket.



cURus  
Type 4/4X/12  
pending





inserts	page:
CKM 3 and 4 poles + ⊕	58
CKSM 3 and 4 poles + ⊕	-
CKSHM 3 and 4 poles + ⊕	63
CDM 7 poles + ⊕	66
CDM 8 poles	67
CQ4M 2 poles + ⊕	182
CQ4M H 2 poles + ⊕	183
CQ4M 3 poles + ⊕	184
CQ4M 3+2 (aux) poles + ⊕	16 *
CQM 5 poles + ⊕	186
CQM 7 poles + ⊕	187
CQM 12 poles + ⊕	189
CQM 21 poles	190

refer to CN.19 pages  
\* refer to NEWS 2020 pages

HYGIENIC gasket  
for “21.21” male inserts

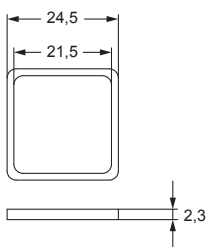


FROM OCTOBER 2020

description	part No.
-------------	----------

HYGIENIC gasket for male inserts “21.21” size CR 21.21 GMH

**! CAUTION:**  
This gasket must replace the standard gasket on the male insert, that foresees a gasket.



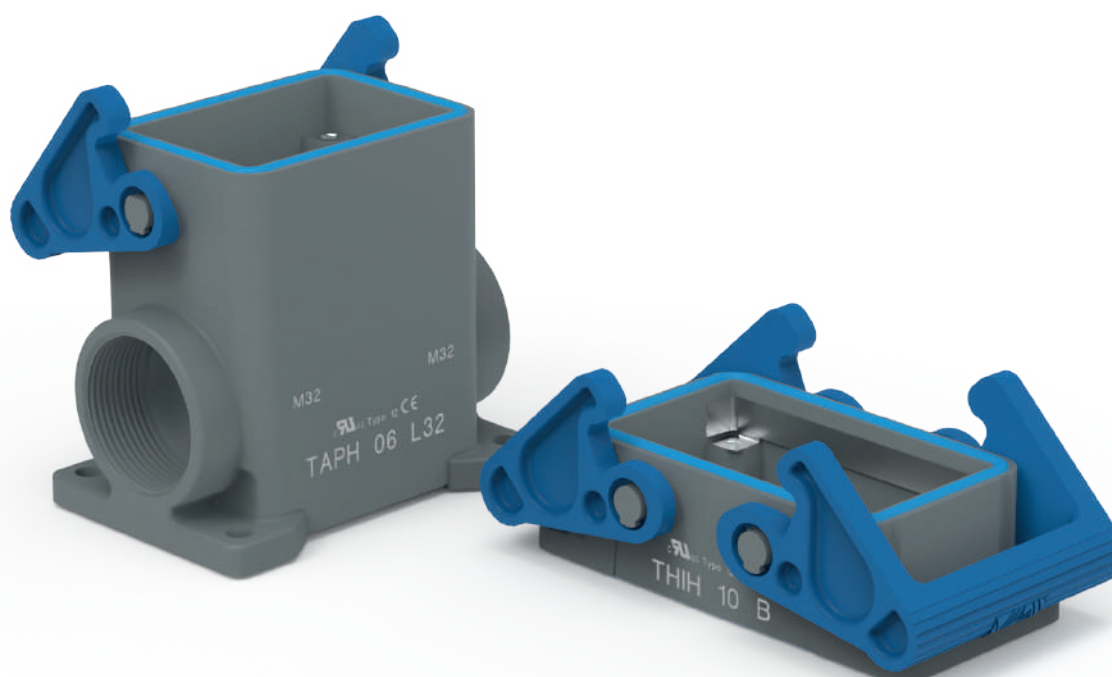
## CKH - MKH HYGIENIC ENCLOSURES



---

## T-TYPE HYGIENIC WITH METAL-DETECTABLE LEVERS

---



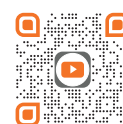
Locking lever(s)  
made of metal detectable  
thermoplastic material,  
suitable for food contact



Find more  
information on  
our products at  
[www.ilme.com](http://www.ilme.com)

## TECHNICAL FEATURES

### T-TYPE/H & T-TYPE/C



Watch  
our technical  
clip

Series **T-TYPE HYGIENIC** enclosures with locking lever (both the **/H** and the **/C** versions), likewise the recently introduced **CKH-MKH** HYGIENIC size "21.21" series of enclosures (see ILME NEWS 2020 catalogue, pages 106-115), are now updated with the locking lever(s) made of **metal detectable thermoplastic material**, suitable for food contact.

Metal detection of foreign objects in food processing plants is widely used as a means to guarantee from accidental loss of such parts in food prior to its further processing, canning, bottling or packaging in general.

In addition to the blue colour, that helps to optically detect through surveillance cameras the presence of parts clearly alien to food (no blue natural food is known, hence the choice of this colour), metal detection comes in help, as already popular in food processing.

**Part Numbers remain unchanged.**  
Zip code **will be announced by a dedicated Product Info.**

**FROM JUNE 2021**

Size	Cable outlet	Locking lever	T-TYPE HYGIENIC /H		T-TYPE HYGIENIC Cold /C	
			part No.	part No.*	part No.	part No.*
44.27	-	single	THIH 06 L	THIH 06 LB	THIC 06 L	THIC 06 LB
57.27	-	double	THIH 10	THIH 10 B	THIC 10	THIC 10 B
77.27	-		THIH 16	THIH 16 B	THIC 16	THIC 16 B
104.27	-		THIH 24	THIH 24 B	THIC 24	THIC 24 B
44.27	M25	single	TAPH 06 L25	TAPH 06L25B	TAPC 06 L25	TAPC 06L25B
	M32		TAPH 06 L32	TAPH 06L32B	TAPC 06 L32	TAPC 06L32B
	2xM25		TAPH 06 L225	TAPH06L225B	TAPC 06 L225	TAPC06L225B
	2xM32		TAPH 06 L232	TAPH06L232B	TAPC 06 L232	TAPC06L232B
57.27	M25	double	TAPH 10.25	TAPH 10.25B	TAPC 10.25	TAPC 10.25B
	M32		TAPH 10.32	TAPH 10.32B	TAPC 10.32	TAPC 10.32B
	2xM25		TAPH 10.225	TAPH10.225B	TAPC 10.225	TAPC10.225B
	2xM32		TAPH 10.232	TAPH10.232B	TAPC 10.232	TAPC10.232B
77.27	M32		TAPH 16.32	TAPH 16.32B	TAPC 16.32	TAPC 16.32B
	M40		TAPH 16.40	TAPH 16.40B	TAPC 16.40	TAPC 16.40B
	2xM32		TAPH 16.232	TAPH16.232B	TAPC 16.232	TAPC16.232B
	2xM40		TAPH 16.240	TAPH16.240B	TAPC 16.240	TAPC16.240B
104.27	M32		TAPH 24.32	TAPH 24.32B	TAPC 24.32	TAPC 24.32B
	M40		TAPH 24.40	TAPH 24.40B	TAPC 24.40	TAPC 24.40B
	2xM32		TAPH 24.232	TAPH24.232B	TAPC 24.232	TAPC24.232B
	2xM40		TAPH 24.240	TAPH24.240B	TAPC 24.240	TAPC24.240B
44.27	M25	single	TAVH 06 LG25	TAVH06LG25B	TAVC 06 LG25	TAVC06LG25B
	M32		TAVH 06 LG32	TAVH06LG32B	TAVC 06 LG32	TAVC06LG32B
57.27	M25	double	TAVH 10 G25	TAVH 10G25B	TAVC 10 G25	TAVC 10G25B
	M32		TAVH 10 G32	TAVH 10G32B	TAVC 10 G32	TAVC 10G32B
77.27	M32		TAVH 16 G32	TAVH 16G32B	TAVC 16 G32	TAVC 16G32B
	M40		TAVH 16 G40	TAVH 16G40B	TAVC 16 G40	TAVC 16G40B
104.27	M32		TAVH 24 G32	TAVH 24G32B	TAVC 24 G32	TAVC 24G32B
	M40		TAVH 24 G40	TAVH 24G40B	TAVC 24 G40	TAVC 24G40B

\* Enclosures with protective earth jumpers CR...BPE preassembled with part No. of base model plus **letter B** at the end.

Size	With loop	Locking lever	Covers for T-TYPE HYGIENIC	Covers for T-TYPE HYGIENIC Cold
			part No.	part No.
44.27		single	THCH 06 LG	THCC 06 LG
57.27		double	THCH 10 G	THCC 10 G
77.27			THCH 16 G	THCC 16 G
104.27			THCH 24 G	THCC 24 G

---

## PLANARITY GASKETS FOR T-TYPE SURFACE MOUNTING HOUSING CR 06 /10 /16 /24 GTPC

---



Suitable for all sizes  
of the T-TYPE HYGIENIC /H and /C



Find more  
information on  
our products at  
[www.ilme.com](http://www.ilme.com)

## TECHNICAL FEATURES

### CR 06 /10 /16 /24 GTPC



Watch  
our technical  
clip

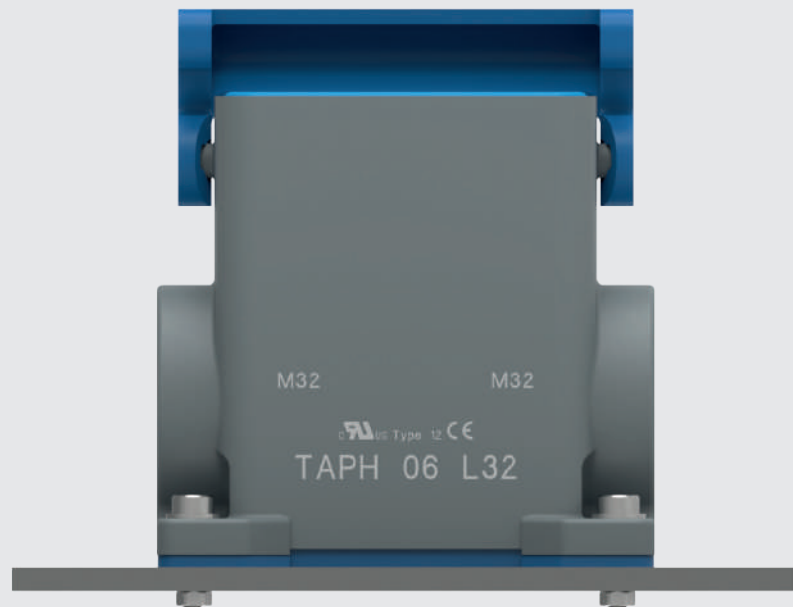
Available in four dedicated sizes.

Suitable for closing the gap underneath wall-mounting housings of all sizes “44.27”, “57.27”, “77.27” and “104.27” of the **T-TYPE HYGIENIC** (both **/H** and **/C** for cold applications).

Re-establish planarity of the bottom (base) of these housings, thus avoiding the potential “nesting” of hazardous dirt in a gap otherwise difficult to be fully cleaned with washing in HYGIENIC applications.

Made with food grade silicone, blue coloured.

it closes the gap  
underneath  
wall-mounting  
housings of all  
sizes of the T-TYPE  
HYGIENIC



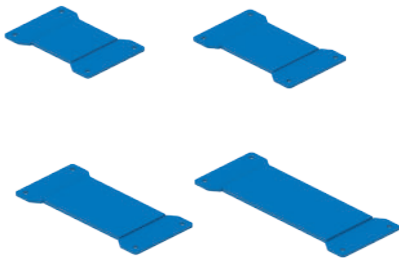


CR 06/10/16/24 GTPC planarity gaskets for T-TYPE surface mounting housing

T-TYPE surface mounting housing:	page:
T-TYPE / H	
size "44.27"	501
size "57.27"	502
size "77.27"	503
size "104.27"	504
T-TYPE / C	
size "44.27"	506
size "57.27"	507
size "77.27"	508
size "104.27"	509

refer to CN.19 pages

planarity gasket  
for T-TYPE surface mounting housing



description

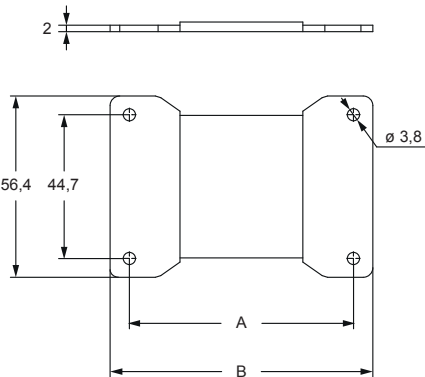
part No.

planarity gasket for surface mount T-TYPE size "44.27"  
planarity gasket for surface mount T-TYPE size "57.27"  
planarity gasket for surface mount T-TYPE size "77.27"  
planarity gasket for surface mount T-TYPE size "104.27"

CR 06 GTPC  
CR 10 GTPC  
CR 16 GTPC  
CR 24 GTPC

- food grade silicone, blue colour

CR GTCP



part No.	polarity	A	B
CR 06 GTPC	06	69,7	81,7
CR 10 GTPC	10	81,7	93,9
CR 16 GTPC	16	104,7	116,7
CR 24 GTPC	24	131,7	143,6

## ASSEMBLY INSTRUCTIONS

## CR GTPC

- \* Screws, washers and conternuts not provided (installation dependent)

