

CZ - MZ IL-BRID standard version

inserts

CD	15 poles + ⊕
CDA	10 poles + ⊕
CSAH	10 poles + ⊕
CDC	10 poles + ⊕
MIXO	1 module

page:

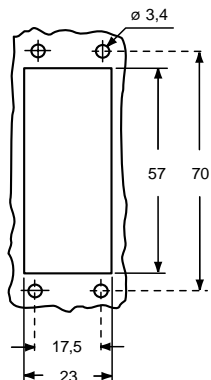
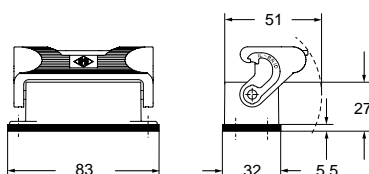
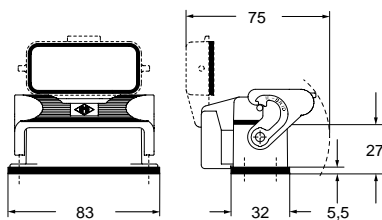
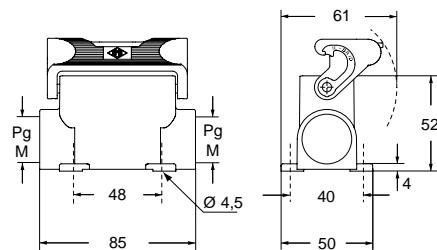
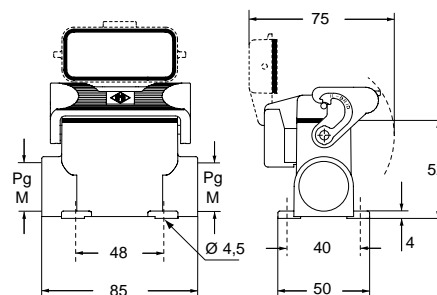
68
98
99
104
264 - 316

bulkhead mounting housings
with single leversurface mounting housings
with single lever

description	part No.	part No.	entry Pg	part No.	entry M
with single lever	CZI 15 L				
with single lever and cover	CZI 15 LS				
with single lever		CZP 15 L	16		
with single lever		CZP 15 L2	16 x 2		
with single lever		CZP 15 L21	21	MZP 15 L25	25
with single lever		CZP 15 L221	21 x 2	MZP 15 L225	25 x 2
with single lever and cover		CZP 15 LS	16		
with single lever and cover		CZP 15 LS2	16 x 2		
with single lever and cover		CZP 15 LS21	21	MZP 15 LS25	25
with single lever and cover		CZP 15 LS221	21 x 2	MZP 15 LS225	25 x 2

☑ The enclosures ensure IP66/IP69 degree of protection (or IP65 for hinged cover versions) when mated and locked with the closing levers.

panel cut-out for bulkhead mounting housings

**CZI L ▲****CZI LS ●****CZP L and MZP L ▲****CZP LS and MZP LS ●**

CU[®]US

Type
4/4X/12





CZ - MZ IL-BRID lever standard version SIMPLEX self-closing covers

inserts		page:
CD	15 poles + ⊕	68
CDA	10 poles + ⊕	98
CSAH	10 poles + ⊕	99
CDC	10 poles + ⊕	104
MIXO	1 module	264 - 316

bulkhead mounting housings
with single lever



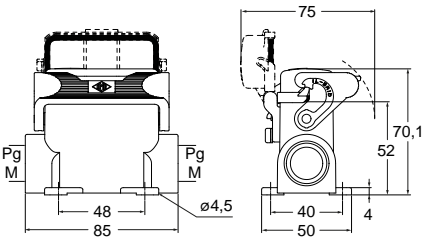
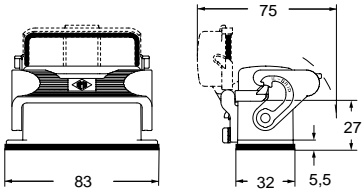
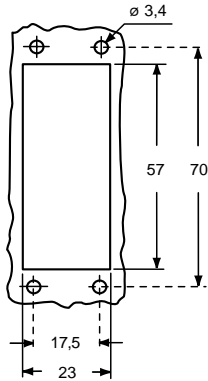
surface mounting housings
with single lever



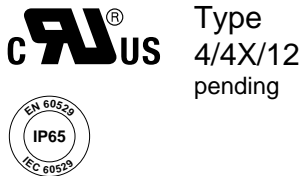
description	part No.	part No.	entry Pg	part No.	entry M
with single lever and cover	CZI 15 LSP				
with lever and cover		CZP 15 LSP16	16	MZP 15 LSP20	20
with lever and cover		CZP 15 LSP21	21	MZP 15 LSP25	25

☑ The enclosures ensure IP65 degree of protection when mated and locked with the closing lever, or IP44 protection when not mated and locked with lever, thanks to the SIMPLEX self-closing cover.

panel cut-out for bulkhead mounting housings



Type
4/4X/12



Type
4/4X/12
pending

CZ - CZA - CZF and MZ - MZA - MZF IL-BRID standard version

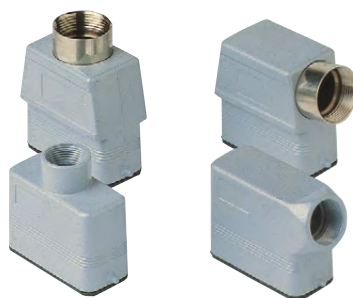
inserts

CD	15 poles + ⊕
CDA	10 poles + ⊕
CSAH	10 poles + ⊕
CDC	10 poles + ⊕
MIXO	1 module

page:

68
98
99
104
264 - 316

hoods with 2 pegs

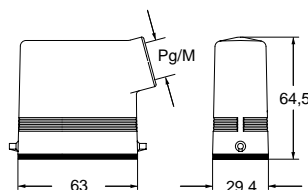
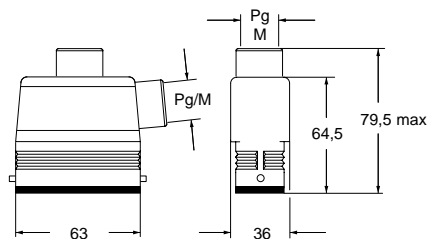
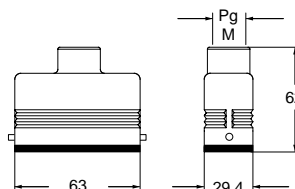
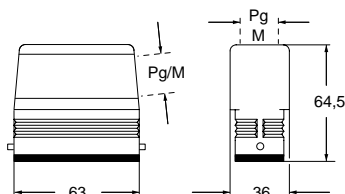
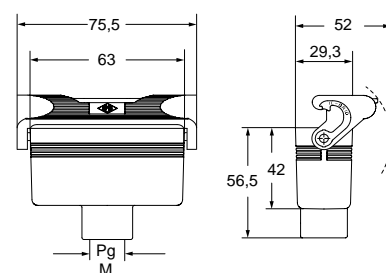


hoods with single lever



description	part No.	entry Pg	part No.	entry M	part No.	entry Pg	part No.	entry M
with pegs, side entry	CZO 15 L	16	MZO 15 L20	20				
with pegs, side entry			MZO 15 L25	25				
with pegs, side entry, high construction	CZAO 15 L16	16	MZAO 15 L20	20				
with pegs, side entry, high construction	CZAO 15 L21	21	MZAO 15 L25	25				
with pegs, top entry	CZV 15 L	13,5	MZV 15 L20	20				
with pegs, top entry, high construction	CZAV 15 L16	16	MZAV 15 L20	20				
with pegs, top entry, high construction	CZAV 15 L21	21	MZAV 15 L25	25				
with pegs, side entry, high construction, without adapter ¹⁾	CZFO 15 L16	16	MZFO 15 L20	20				
with pegs, side entry, high construction, without adapter ¹⁾	CZFO 15 L21	21	MZFO 15 L25	25				
with pegs, top entry, high construction, without adapter ¹⁾	CZFO 15 L16	16	MZFO 15 L20	20				
with pegs, top entry, high construction, without adapter ¹⁾	CZFO 15 L21	21	MZFO 15 L25	25				
with single lever, top entry					CZV 15 LG	13,5	MZV 15 LG20	20

¹⁾ enclosure without adapter, threaded on the body, to be used only with a complete cable gland.

CZO L and MZO L ▲**CZAO L - MZAO L and CZAV L - MZAV L ▲****CZV L and MZV L ▲****CZFO L - MZFO L and CZFV L - MZFV L ●****CZV LG and MZV LG ▲**

CALUS Type 4/4X/12



▲ insulating cable gland or fittings without gasket



▲ cable gland with O-Ring gasket



● cable gland with O-Ring gasket
IP67 if hoods with fused pegs and without adapters, coupled with IP67 housings



CZ IL-BRID standard version

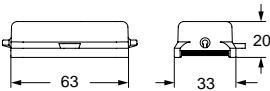
inserts		page:
CD	15 poles + ⊕	68
CDA	10 poles + ⊕	98
CSAH	10 poles + ⊕	99
CDC	10 poles + ⊕	104
MIXO	1 module	264 - 316

covers

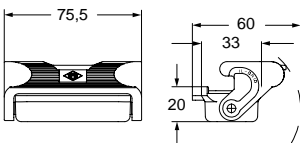


description	part No. (with eyelet)	part No. (with loop)
with pegs and gasket (for 1 lever enclosures)	CZC 15 L	CZC 15 SL
with lever (for enclosures with pegs)		CZC 15 LG

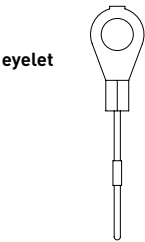
CZC L (SL) ●



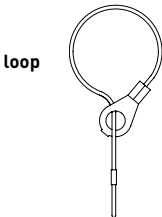
CZC LG ▲



For fixing on housings



For fixing on hoods



CALUS Type 4/4X/12



● IP67 if coupled with CZ7 - MZ7 housings (see page 384)

CZAC IL-BRID standard version

inserts	page:	hoods without entry, to be drilled	hoods without entry, to be drilled
size “49.16”			
CD	15 poles + ⊕	68	
CDA	10 poles + ⊕	98	
CSAH	10 poles + ⊕	99	
CDC	10 poles + ⊕	104	
MIXO	1 module	264 - 316	
size “66.16”			
CD	25 poles + ⊕	69	
CDD	38 poles + ⊕	77	
CDA	16 poles + ⊕	100	
CSAH	16 poles + ⊕	101	
CDC	16 poles + ⊕	105	



description

part No.
(with 2 pegs)

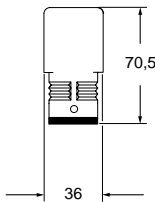
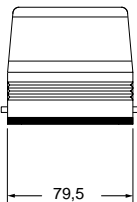
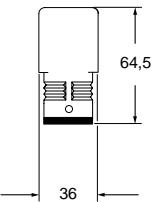
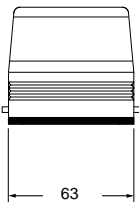
part No.
(with 2 pegs)

with pegs, high construction
used with enclosures size “49.16”

CZAC 15 L

with pegs, high construction
used with enclosures size “66.16”

CZAC 25 L



CALUS Type
4/4X/12



IP67 if coupled with CZ7 - MZ7 housings
(see page 384 or 385)

CZ7 - MZ7 standard version RIGID LEVER

inserts

CD	15 poles + ⊕
CDA	10 poles + ⊕
CSAH	10 poles + ⊕
CDC	10 poles + ⊕
MIXO	1 module

page:

68
98
99
104
264 - 316

bulkhead mounting housings
with single lever

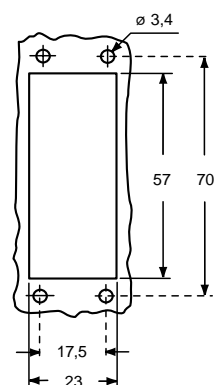
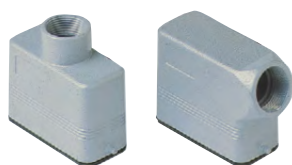
STAINLESS STEEL LEVER

surface mounting housings
with single lever

STAINLESS STEEL LEVER

description	part No.	part No.	entry M
with single lever	CZ7I 15 L		
with single lever and cover	CZ7I 15 LS		
with single lever		MZ7P 15 L25	25
with single lever		MZ7P 15 L225	25 x 2
with single lever and cover		MZ7P 15 LS25	25
with single lever and cover		MZ7P 15LS225	25 x 2

panel cut-out for bulkhead mounting housings

Hoods
(page 376)

The rigid lever offers an IP66/IP67/IP69 degree of protection (according to EN 60529) when fitted with a complete and coupled connector and used with ILME standard hoods in die cast aluminum with pegs (without adapter).

CAUS Type
4/4X/12

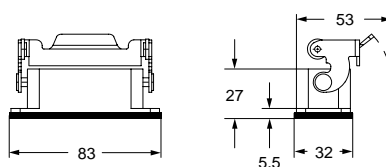


insulating cable gland or fittings
without gasket

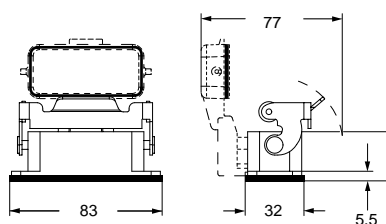


cable gland with O-Ring gasket
IP67 if coupled with IP67 hood or cover

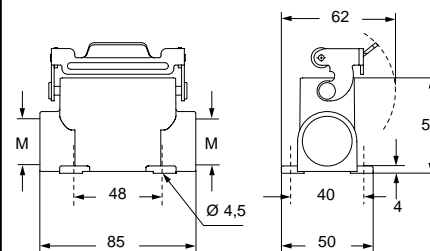
CZ7I L



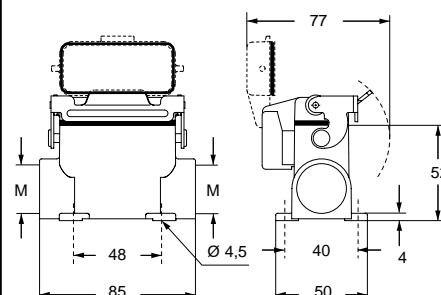
CZ7I LS



MZ7P L



MZ7P LS



For bulkhead mounting housings, IP66/IP67/IP69 degree of protection is guaranteed for mounting on a sufficiently rigid panel; use M3 screws of suitable length (negligible surface buckling when subjected to tightening torque on the fixing screws of 0,9 - 1 Nm or to deformation caused by the weight of the complete connector).

In addition, the panel surface in contact with the flange gasket of the bulkhead mounting housings must be free from defects (deep scratches, grooves, burrs) that could negatively affect the performance of the gasket.