

CX 01 9VF/9VM for 9-pole crimp D-SUB connector

The modular inserts must be installed in suitable frames which are then mounted in traditional enclosures* or in COB panel support.
Single-sized modular units may be directly mounted inside MIXO ONE enclosures.

frames for modular units* page: 316 - 317

MIXO ONE enclosures 369

* enclosures:
housings or high construction hoods

module adapter for 1 D-SUB connector



CI (5A) crimp contacts for D-SUB gold plated



description	part No.	part No
-------------	----------	---------

seat for 1 D-SUB crimp contacts connector and shield (included)

female insert with connector
male insert with connector

CX 01 9VF
CX 01 9VM

CI (5A) female crimp contacts
0.08-0.13 mm² AWG 28-26
0.20-0.52 mm² AWG 24-20

CIVFD 0.1
CIVFD 0.5

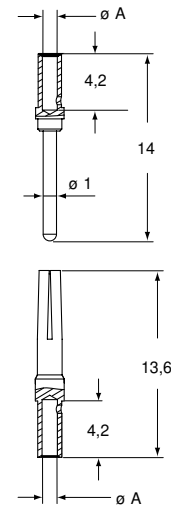
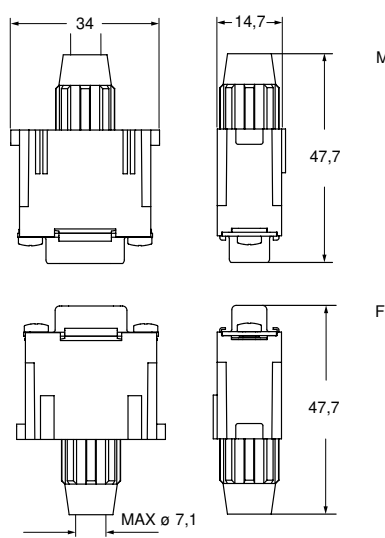
gold plated

CI (5A) male crimp contacts
0.08-0.13 mm² AWG 28-26
0.20-0.52 mm² AWG 24-20

CIVMD 0.1
CIVMD 0.5

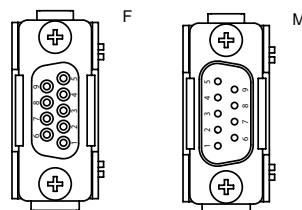
- characteristics according to EN 61984:
5A 50V 0,8kV 3
- insulation resistance: $\geq 10 \text{ G}\Omega$
- ambient temperature limit: $-40 \text{ }^\circ\text{C} \dots +70 \text{ }^\circ\text{C}$
- for crimp 5A contacts CI series use, on page 717:
CIPZ D crimping tool
CIVTP D turret head
CIVES insertion / removal tool

Warnings:
We recommend the use of code pins
CRF CX / CRM CX.



contacts side (front view)

side with reference arrow ▲



- 1 frame slot

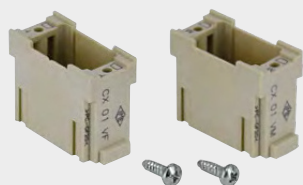
MIXO DATA

ALTERNATIVELY



- Seats for 1 D-SUB screw connectors (without shield):

CX 01 9VFS (with female connectors)
CX 01 9VMS (with male connectors)



- Seat for 1 D-SUB connector
(without connector and shield):

CX 01 VM (for male connector)
CX 01 VF (for female connector)

Can also be used with 15-pole D-SUB Hi-Density connectors.
For further information, please contact ILME S.p.A.



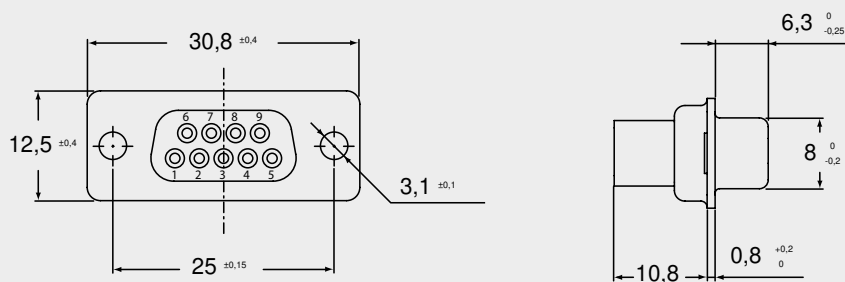
- CR CX VS shield
for CX 01 VM/VF inserts



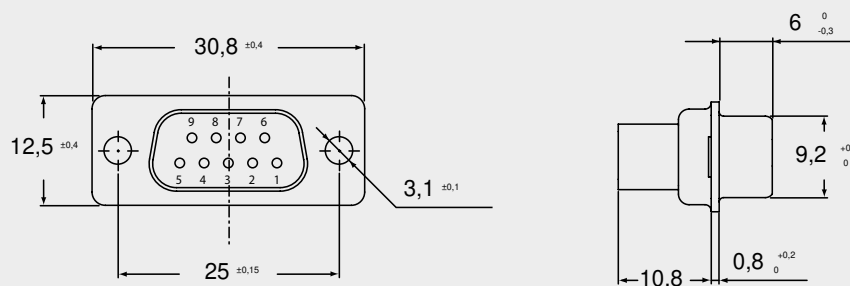
- Special version with cable contacts section
0,32-0,82 mm² AWG 22-18

CIVFD 0.8 female
CIVMD 0.8 male

9-POLE FEMALE CRIMP D-SUB CONNECTOR (CAN BE USED WITH CX 01 VF)



9-POLE MALE CRIMP D-SUB CONNECTOR (CAN BE USED WITH CX 01 VM)



CX 01 9VTF 9-pole crimp D-SUB RS-485 BUS connector

The modular inserts must be installed in suitable frames which are then mounted in traditional enclosures* or in COB panel support.
Single-sized modular units may be directly mounted inside MIXO ONE enclosures.

frames for modular units* page: 316 - 317

MIXO ONE enclosures 369

* enclosures:
housings or high construction hoods

module adapter
for 1 D-SUB RS-485 connector



module adapter
for 1 D-SUB connector



description

part No.

part No

MIXO D-Sub 9-pole female module for RS-485
T-connection, with cable clamp accommodation
for 2 cables

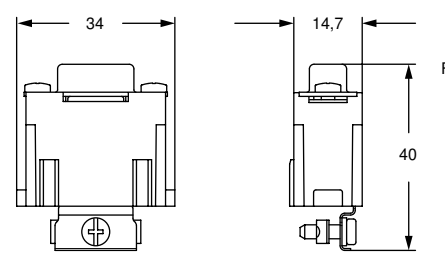
CX 01 9VTF

seat for 1 D-SUB crimp contacts connector and shield
(included)
male insert with connector

CX 01 9VM

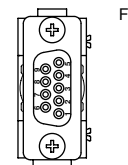
- characteristics according to EN 61984:
5A 50V 0,8kV 3
- insulation resistance: $\geq 10 \text{ G}\Omega$
- ambient temperature limit: $-40 \text{ }^\circ\text{C} \dots +70 \text{ }^\circ\text{C}$
- "T" functionality with connection of two RS-485 bus cables (screw terminal)
- to be coupled with CX 01 9VM module
- for wires $0,14\text{-}0,5 \text{ mm}^2$ - 26-20 AWG
- cable screen max outer diameter 6 mm

Warnings:
We recommend the use of code pins
CRF CX / CRM CX.

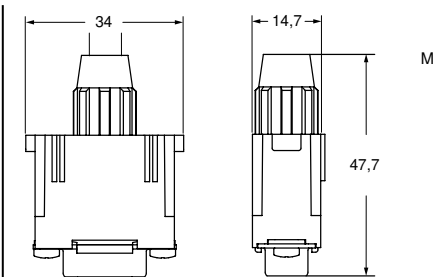


contacts side (front view)

side with reference arrow ▲

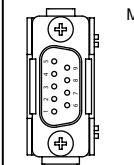


- 1 frame slot



contacts side (front view)

side with reference arrow ▲



- 1 frame slot



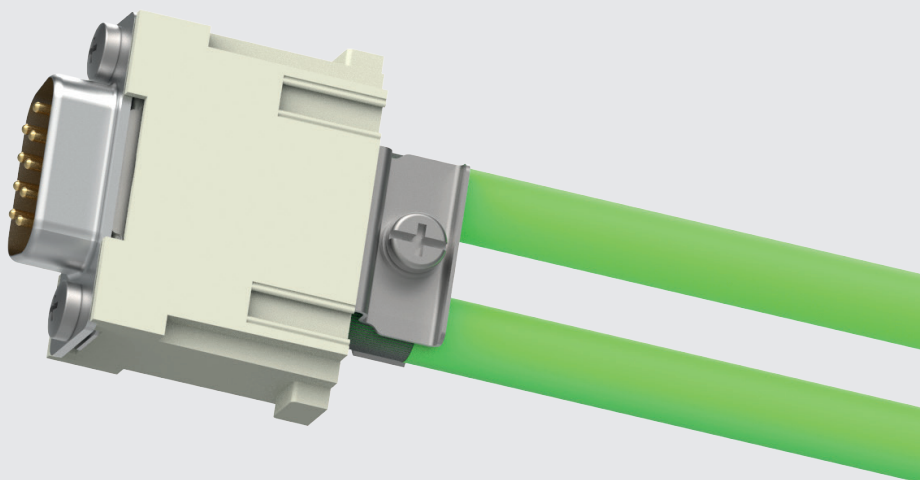
Watch
our
online
tutorial

TECHNICAL FEATURES

CX 01 9VF2 /9VM2

- Allows the connection of the 9-pole D-Sub shielded connector **using two separate cables** (thanks to a double cable clamp on the shield).
- **Clamp for 2 cables** max Ø 6,0 mm.
- Adds to the currently available **CX 01 9VF /9VM** shielded 9-pole D-Sub module for single cable.
- 9-pole D-Sub connector for turned removable crimp contacts series **CI** or the new **SI** series stamped crimped contacts up to size 0.5.
- Shield separated from the PE circuit (MIXO frame).
- EN/IEC 61984 ratings: **5 A 50 V 0,8 kV 3**
NOTE – As a connector with extra-low voltage rating, it is out of the scope of the EU Low Voltage Directive 2014/35/EU and of the Russian equivalent Technical Regulation TR CU 004/2011, hence neither the C€ marking nor the EAC mark are applicable.
- Lower and Upper Limiting Temperatures (LLT ... ULT):
-40 °C ... +85 °C
NOTE - The limitation to the ULT is set upon the usual temperature rating of the data cables, the insulating materials of the inserts and the metal shield might withstand up to 125 °C.
- Fixing screws Ph1, coupling torque 1 Nm.
- Suitable also for MIXO ONE enclosures.

the double cable clamp
on the shield allows
the connection of the
9-pole D-Sub shielded
connector using two
separate cables



CX 01 9VF2 /9VM2 9-pole crimp D-SUB shielded connector

The modular inserts must be installed in suitable frames which are then mounted in traditional enclosures* or in COB panel support.
Single-sized modular units may be directly mounted inside MIXO ONE enclosures.

pages:

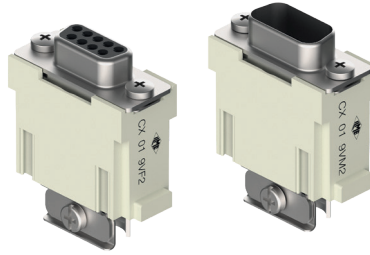
frames for modular units* 316 - 317

MIXO ONE enclosures 369

* enclosures:
housings or high construction hoods

refer to CN.19 pages

module adapter with 1 D-SUB connector
double cable entry



CI (5 A) crimp contacts for D-SUB
gold plated



description

part No.

part No.

seat for 1 D-SUB crimp contacts connector and shield
(included)

female insert with connector
male insert with connector

CX 01 9VF2
CX 01 9VM2

CI (5 A) female crimp contacts
0,08-0,21 mm² AWG 28-24
0,13-0,33 mm² AWG 26-22
0,33-0,52 mm² AWG 22-20

CIFD 0.2
CIFD 0.3
CIFD 0.5

gold plated+

CI (5 A) male crimp contacts
0,08-0,21 mm² AWG 28-24
0,13-0,33 mm² AWG 26-22
0,33-0,52 mm² AWG 22-20

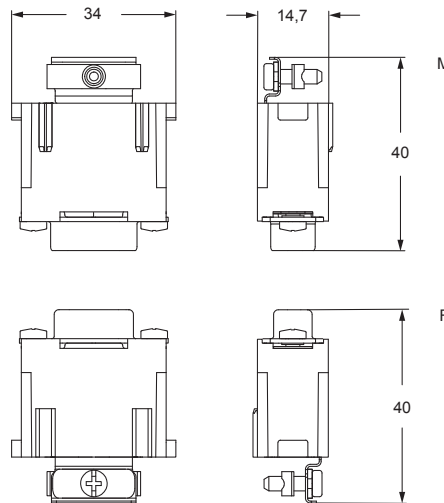
CIMD 0.2
CIMD 0.3
CIMD 0.5

- characteristics according to EN/IEC 61984 ratings:
5 A 50 V 0,8 kV 3
- cUL (UL for USA and Canada), CSA, DNV-GL, BV pending
- Lower and Upper Limiting Temperatures (LLT ... ULT):
-40 °C ... +85 °C
- mechanical life: ≥ 500 cycles
- contact resistance: ≤ 4 mΩ
- for crimp contacts CI series use:
CIPZ D crimping tool
CIPZP D pneumatic crimping tool (see page 144)
CITP D turret head
CIVES insertion / removal tool for contacts 0,2 - 0,5 mm²
(see pages 716 - 719 of CN.19 catalogue)

Warnings:

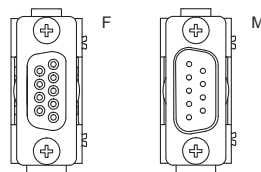
We recommend the use of coding pins
CRF CX / CRM CX (see pages 685 - 686 of CN.19 catalogue).

CRF CX
CRM CX

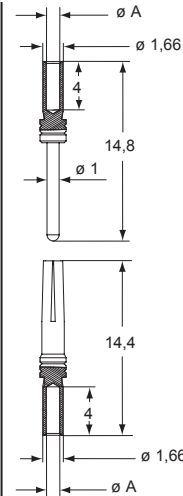


contacts side (front view)

side with reference arrow ▲



- 1 frame slot



CIF and CIM contacts

conductor section (mm ²)	conductor slot ø A (mm)	conductors stripping length (mm)
0,08-0,21	0,64	4
0,13-0,33	0,90	4
0,33-0,52	1,12	4

* for basic or high thickness gold plating, please refer to page 74