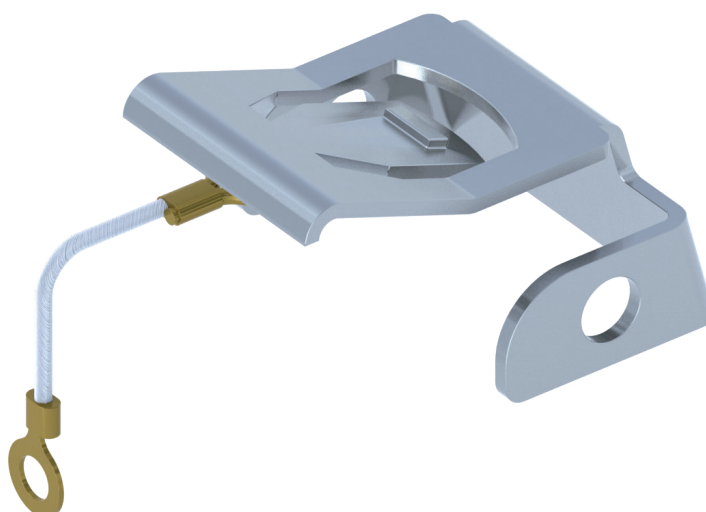

LOCKING DEVICE FOR “CLASS” LOCKING LEVERS CR CLK



Locking device for bulkhead
and surface mounting housings, low profile,
with two “Class” locking levers



Find more
information on
our products at
www.ilme.com

CR CLK locking device for CLASS locking levers

enclosures	page:
CHI	10/16/24 poles + ⊕ 393, 402, 412
CHP and MHP	10/16/24 poles + ⊕ 394, 403, 413

stainless steel locking device
for two-lever housings



padlock, 40 mm arc clearance,
optional



description

part No.

part No.

stainless steel locking device, with eyelet,
for fixing on the housings

CR CLK

padlock, supplied with 2 keys

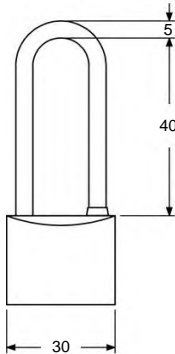
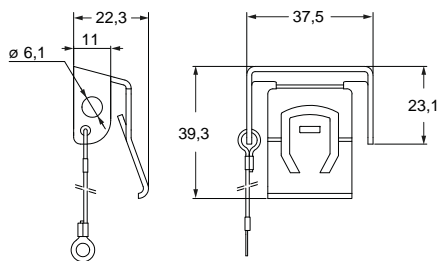
TM BLC125

NOTE: Not suitable neither for hoods with locking
levers and gasket nor for surface-mounting housings,
high profile.

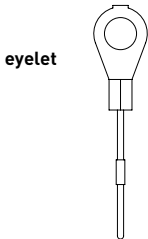
- Locking device, made in stainless steel, that can be
easily placed on the "Class" locking lever handle of
a two-lever bulkhead mounting housing or a "low
profile" surface mounting housing of sizes "57.27",
"77.27" and "104.27", in order to avoid unwanted and
potentially hazardous accidental opening of the locking
lever while the connectors are under working condition;

- possibility to apply, optionally, a padlock
(TM BLC125, separately available, 5 mm shackle
diameter, 40 mm arc clearance) with anti-tamper
function, i.e. to secure the locking against unauthorized
attempts to open the locking lever and disconnect the
connector coupling;

- with eyelet cord end, for fastening the locking device to
the intended housing when not in use.



For fixing on housings



Anti-tamper
function by
TM BLC125
padlock
(to be
ordered
separately)



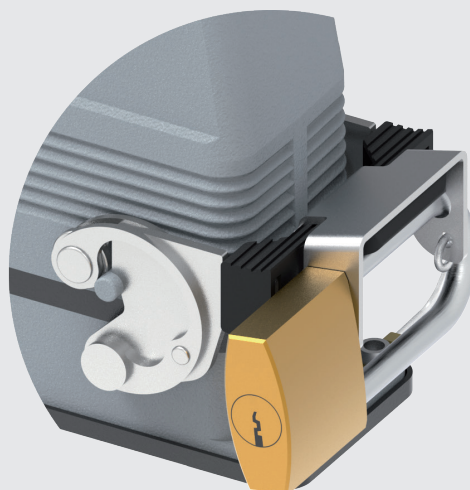
cURus pending

TECHNICAL FEATURES

CR CLK

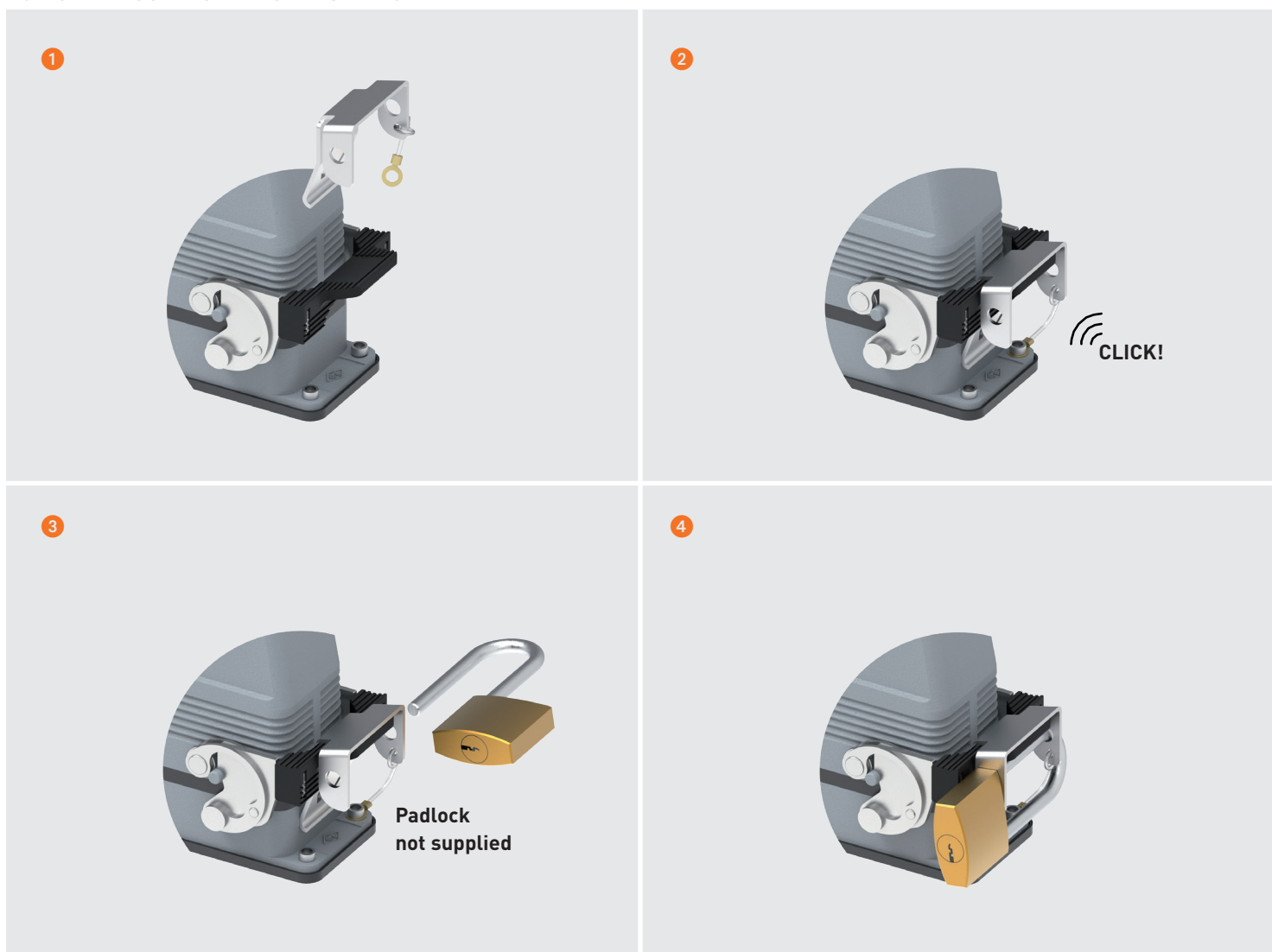
- **locking device**, made in **stainless steel**, that can be easily placed on the “Class” locking lever handle of a **two-lever bulkhead mounting housing** or a “**low profile**” **surface mounting housing** of sizes “57.27”, “77.27” and “104.27”, in order to avoid unwanted and potentially hazardous accidental opening of the locking lever while the connectors are under working condition;
- **possibility to apply, optionally, a padlock** (**TM BLC125**, separately available, 5 mm shackle diameter, 40 mm arc clearance) with **anti-tamper function**, i.e. to secure the locking against unauthorized attempts to open the locking lever and disconnect the connector coupling;
- with eyelet cord end, for fastening the locking device to the intended housing when not in use.

Anti-tamper
function by
TM BLC125
padlock
(to be ordered
separately)

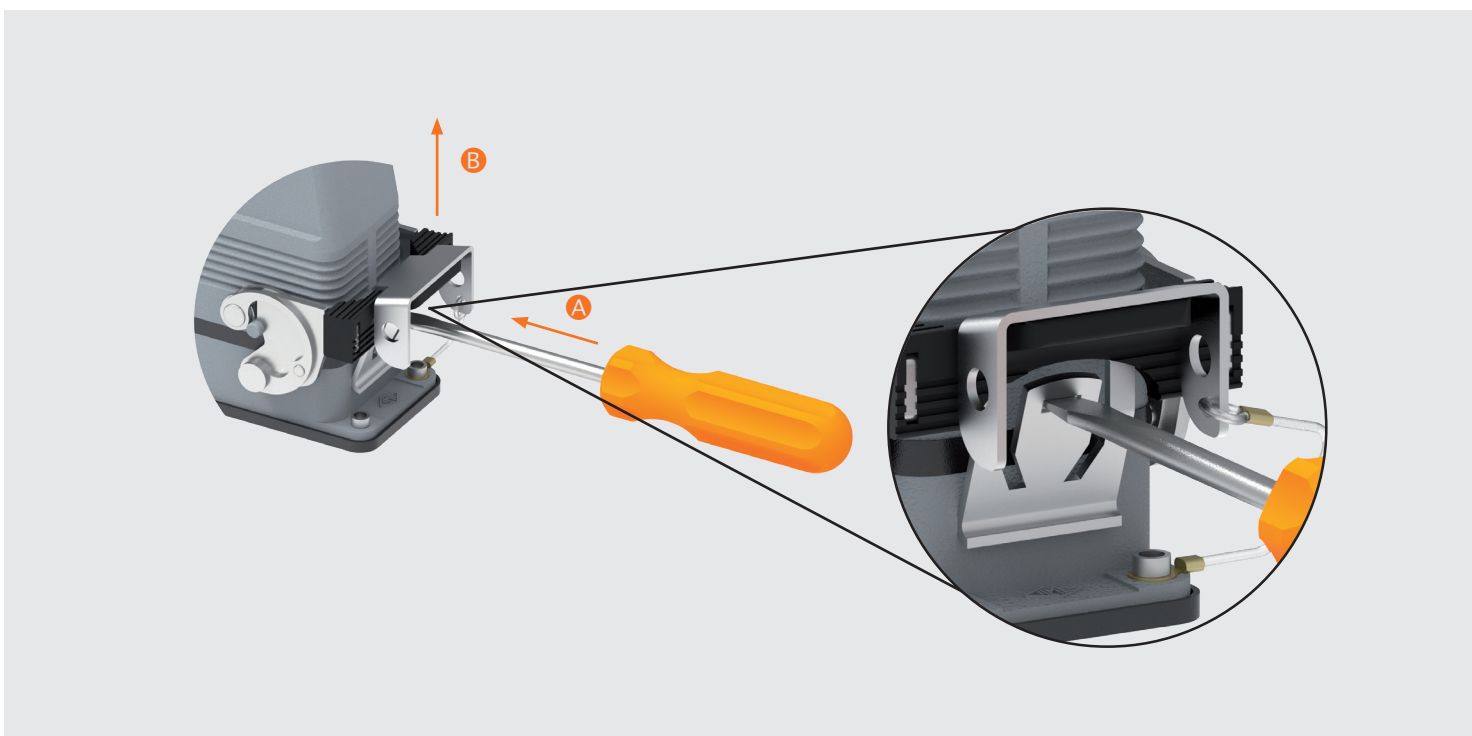


ASSEMBLY INSTRUCTIONS

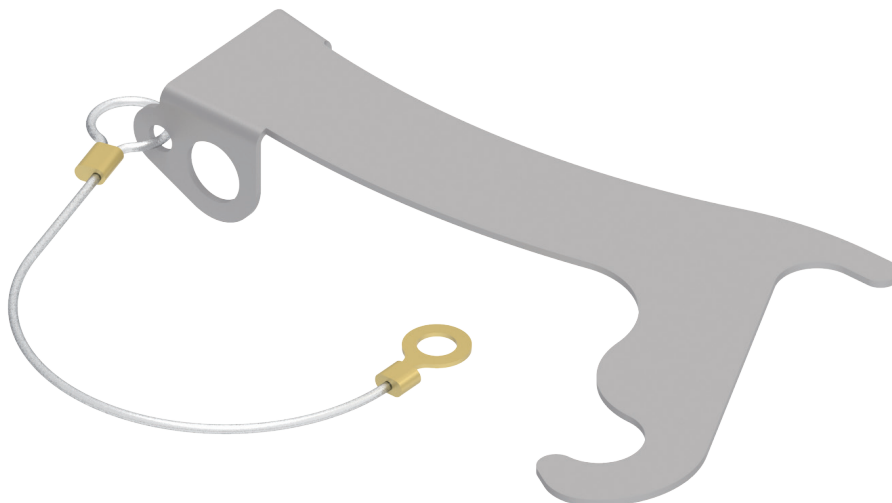
CR CLK - LOCKING DEVICE INSERTION



CR CLK - LOCKING DEVICE EXTRACTION



LOCKING DEVICE FOR ENCLOSURE SIZE “104.27” WITH CENTRAL LEVER



Locking device
for single stainless steel
central locking lever



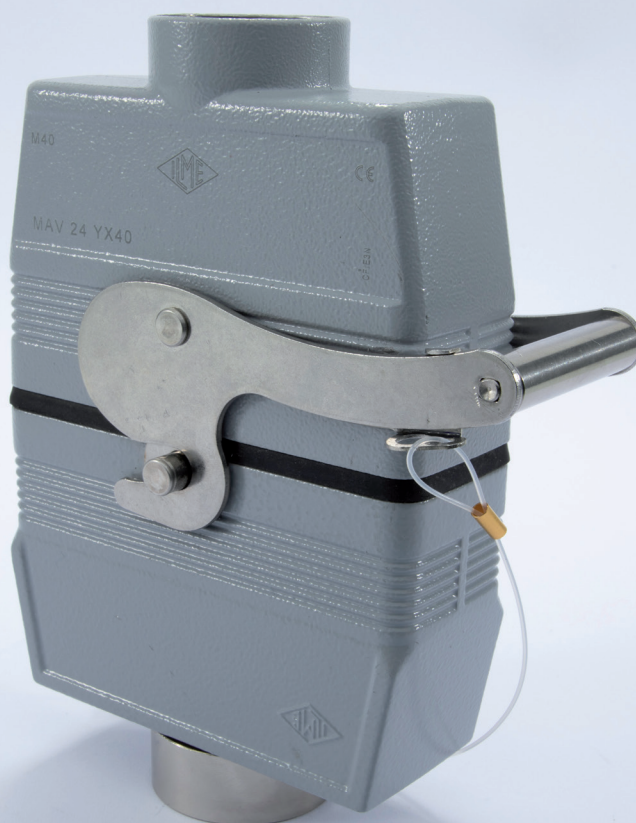
Find more
information on
our products at
www.ilme.com

TECHNICAL FEATURES

CR YLK24 – CR YLK24 SL

- **locking device**, made in **stainless steel**, with **proprietary design**, that can be easily placed on the side of the central lever of a “104.27” hood in order to lock the opening movement of the locking lever, thus avoiding any unwanted and potentially hazardous accidental opening of the connector coupling under working condition;
- **possibility to apply, optionally, a padlock** (**CR BLC622**, separately available, 6 mm shackle diameter, 22 mm arc clearance) with **anti-tamper function**, to secure the locking against any unauthorized attempt to open the locking lever and disconnect the connector coupling;
- **two versions available:**
 - with eyelet cord end, **CR YLK24**
for the fastening to a housing of a central lever coupling when not in use;
 - with “loop” cord end, **CR YLK24 SL**
for the fastening to a hood when not in use (around the incoming cable).

CR YLK24 SL
locking device
with loop for
fixing on hoods



CR YLK24 – CR YLK24 SL

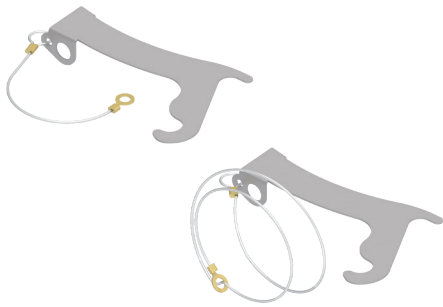
enclosures

central lever size "104.27"

page:

410 - 412

Locking device
for enclosure with central lever
size "104.27"



 **AVAILABLE APRIL 2019**

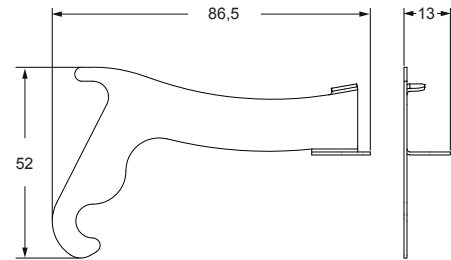
Padlock, 22 mm arc clearance,
optional



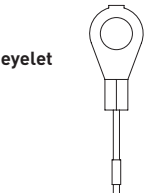
 refer to CN.16 pages

description	part No. (with eyelet)	part No. (with loop)	part. No.
locking device with eyelet for fixing on housings	CR YLK24		
locking device with loop for fixing on hoods		CR YLK24 SL	
padlock, supplied with 2 keys			CR BLC622

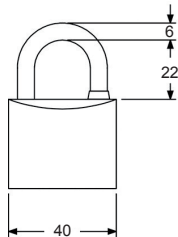
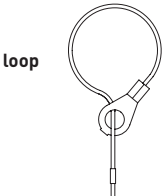
CR YLK24 and CR YLK24 SL



For fixing on housings



For fixing on hoods

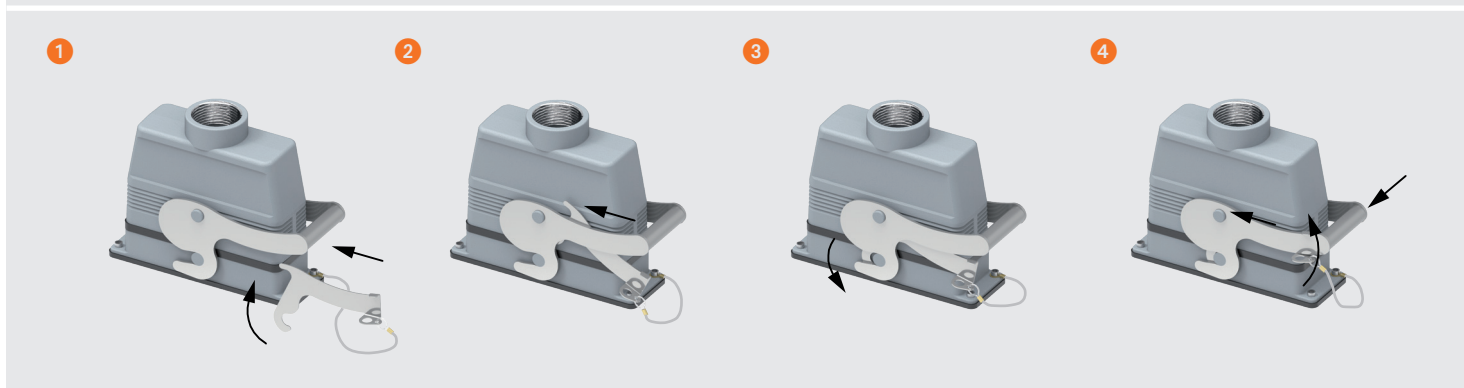


cURus pending

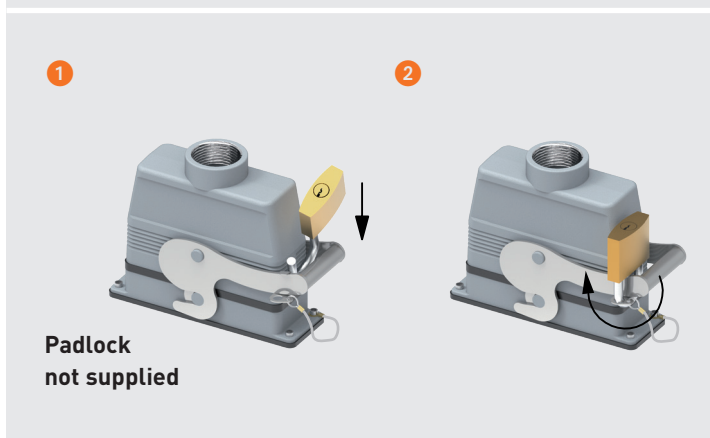
ASSEMBLY INSTRUCTIONS

CR YLK24 WITH EYELET

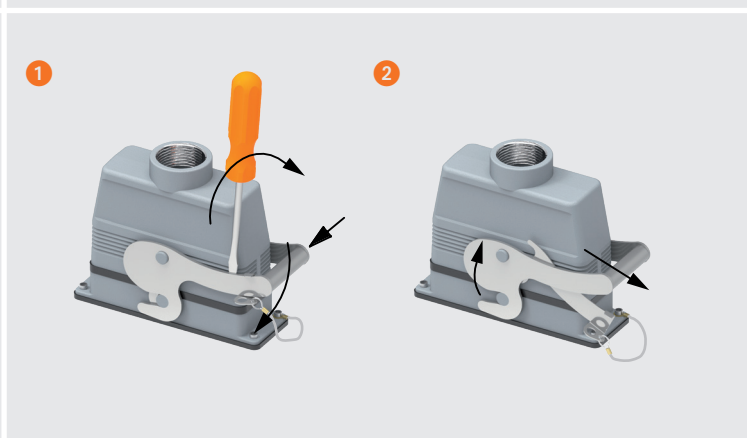
CABLE-TO-PANEL LOCKING



PADLOCK INSERTION

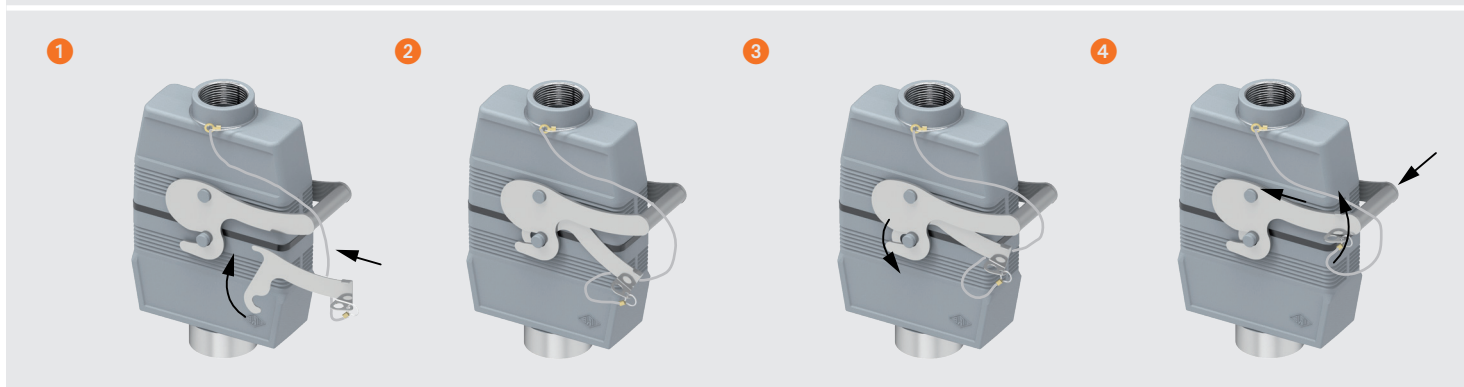


UNLOCKING

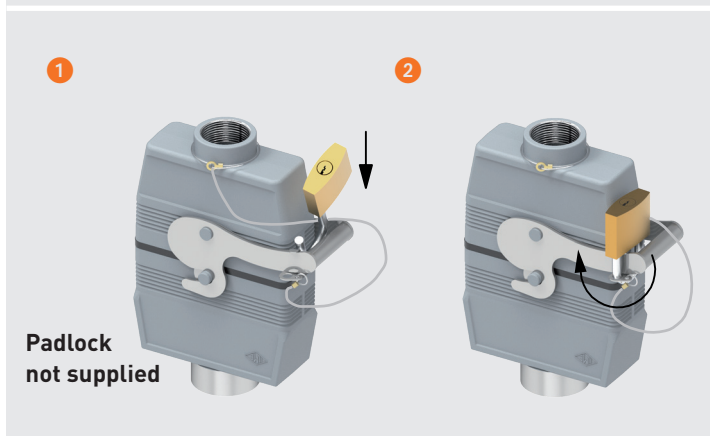


CR YLK24 SL WITH LOOP

CABLE-TO-CABLE LOCKING



PADLOCK INSERTION



UNLOCKING

