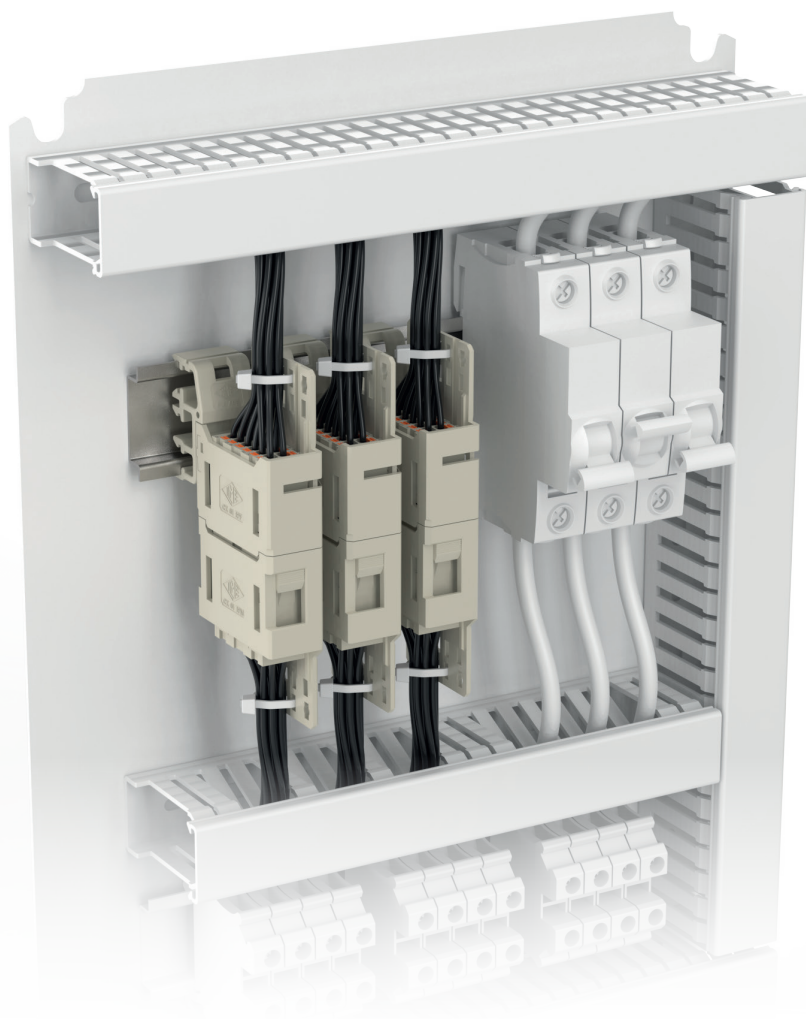


Insulating holders for 1-slot sized MIXO modules
with optional adapter for DIN EN 60715 rails

CX 01 TPF /M, CX APE



For free or fixed installation
also side-by-side



Find out more
www.ilme.com

TECHNICAL FEATURES

This new insulating MIXO holder for 1-slot sized MIXO modular inserts expands the COB system of insulating panel supports, for direct installation inside electrical distribution and control panels without the traditional metallic enclosures.

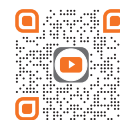
It consists of a **2-part insulating holder** with **snap-in lateral lockings** between the two parts and **strain relief capability** to be used where needed.

Additionally, each coupling can be coded by fitting each insulating holder part with two **optional coding pins CR Q03/2**, each orientable in 4 positions, which provide **up to 16 different codings** (4 coding pins required per each modular insert connector coupling), useful when multiple identical module couplings are installed side-by-side.

The **CX 01 TPM** part of this holding system is deemed to hold the free MIXO single-slot sized modular connector half, the **CX 01 TPF** part is for the counterpart.

By using this new CX 01 TP insulating holder, single-sized MIXO modules can form a locked connector coupling that can be:

- > free (e.g., inside a cable tray);
- > flat-fixed by 4 screws to the back-plane of a panel.



Watch our
technical clip

When this "F" part is fitted with the **CX APE optional adapter**, sliding it into the dedicated slot available on either side of this "F" - fixable part (to allow its orientation at will) -, it can be fixed to the EN 60715 rails (not provided) listed below:

- > top-hat rail DIN EN 60715 TH 35-7,5;
- > top-hat rail DIN EN 60715 TH 35-15;
- > G-rail DIN EN 60715 G 32;
- > C-rail DIN EN 60715 C 30.

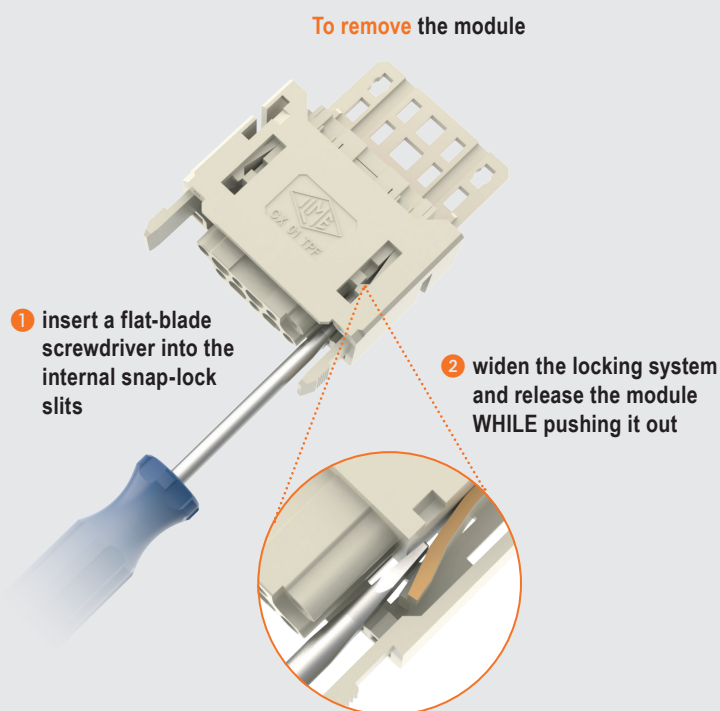
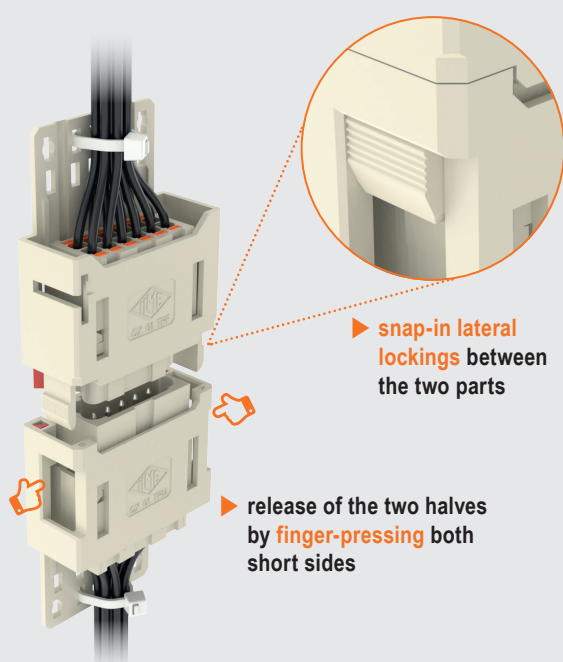
CX 01 TPF, CX 01 TPM holders are made of self-extinguishing thermoplastic insulating material, pebble grey RAL 7032.

These holders keep the two connector halves mated by a **double snap-in locking**, which can easily be released by finger pressing both short sides while unplugging the free connector half.

The coupling realized with these holders provides IPXXB degree of protection according to EN 60529.

MARKINGS AND APPROVALS

- **CE** and **UKCA** markings not applicable, EAC not applicable
- cURus (ECBT2/ECBT8) pending
- CQC, DNV, BV (as accessories) pending
- **RoHS**: compliant



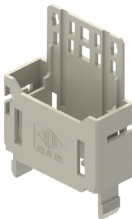
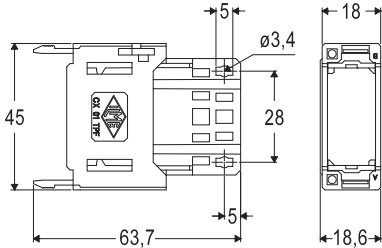
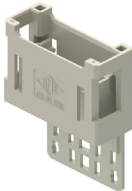
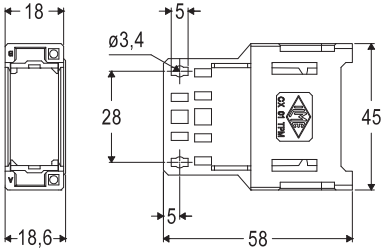

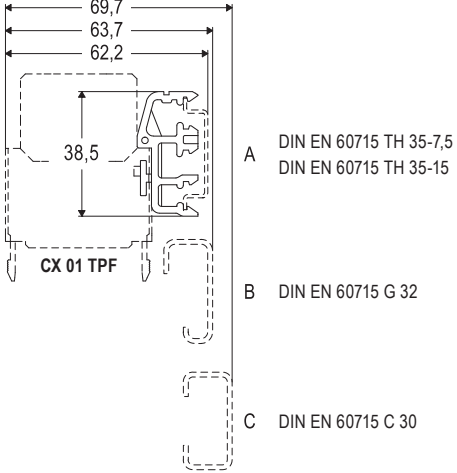
CX 01 TP – CX APE

insulating MIXO holder and adapter for DIN rails

EN 60529 rating	IP2X (IPXXB)
UL 50 / UL 50E	—
Ambient temperature limit	-40 °C ... +125 °C
Mechanical life when fitted with MIXO modules employing	≥ 500 cycles

CQC, DNV, BV pending

cURus pending

Item	Description	Part No.	Dimensions
	Insulating fixed holder for 1-slot sized MIXO modules	CX 01 TPF	
	Insulating free holder for 1-slot sized MIXO modules	CX 01 TPM	
	Adapter for attachment to DIN EN 60715 rails To be used with CX 01 TPF insulating fixed holder	CX APE	

Materials	
Holder	polycarbonate (PC)
UL 94 flammability class	V-0
Colour	RAL 7032



CR Q03/2 Coding pin
See News 2020, page 17